

A photograph of a modern double-storey house at dusk. The house features a mix of materials: dark grey stone on the lower level, light blue-grey panels, and horizontal wood slats on the upper level. Large windows and a glass-paned entrance door are visible, with interior lights glowing. A black metal railing is in the foreground. The image is framed by large white geometric shapes.

DOUBLE STOREY DESIGNS



CONTENTS

10M LOT WIDTH

Claremont 23	4
Coral 27	5
Edgecliff 25	6
Hudson 29	7
Hudson 30	8
Melrose 25	9
Nepean 27	10
Oslo 21	11
Rochester 24	12
Senator 26	13
Westchester 22	14
Woodside 23	15

12.5M LOT WIDTH

Affinity 37	16
Affinity 37 MK2	17
Archer 29	18
Astoria 28	19
Bronte 33 MK1	20
Bronte 33 MK2	21
Bronte 35	22
Coral 29	23
Empire 32	24
Iris 32	25
Lancaster 28	26
Madison 29	27
North Haven 29	28

Riviera 33	29
Sanctuary 28	30
Tribeca 30	31

13M LOT WIDTH

Evoque 34	32
-----------	----

15M LOT WIDTH

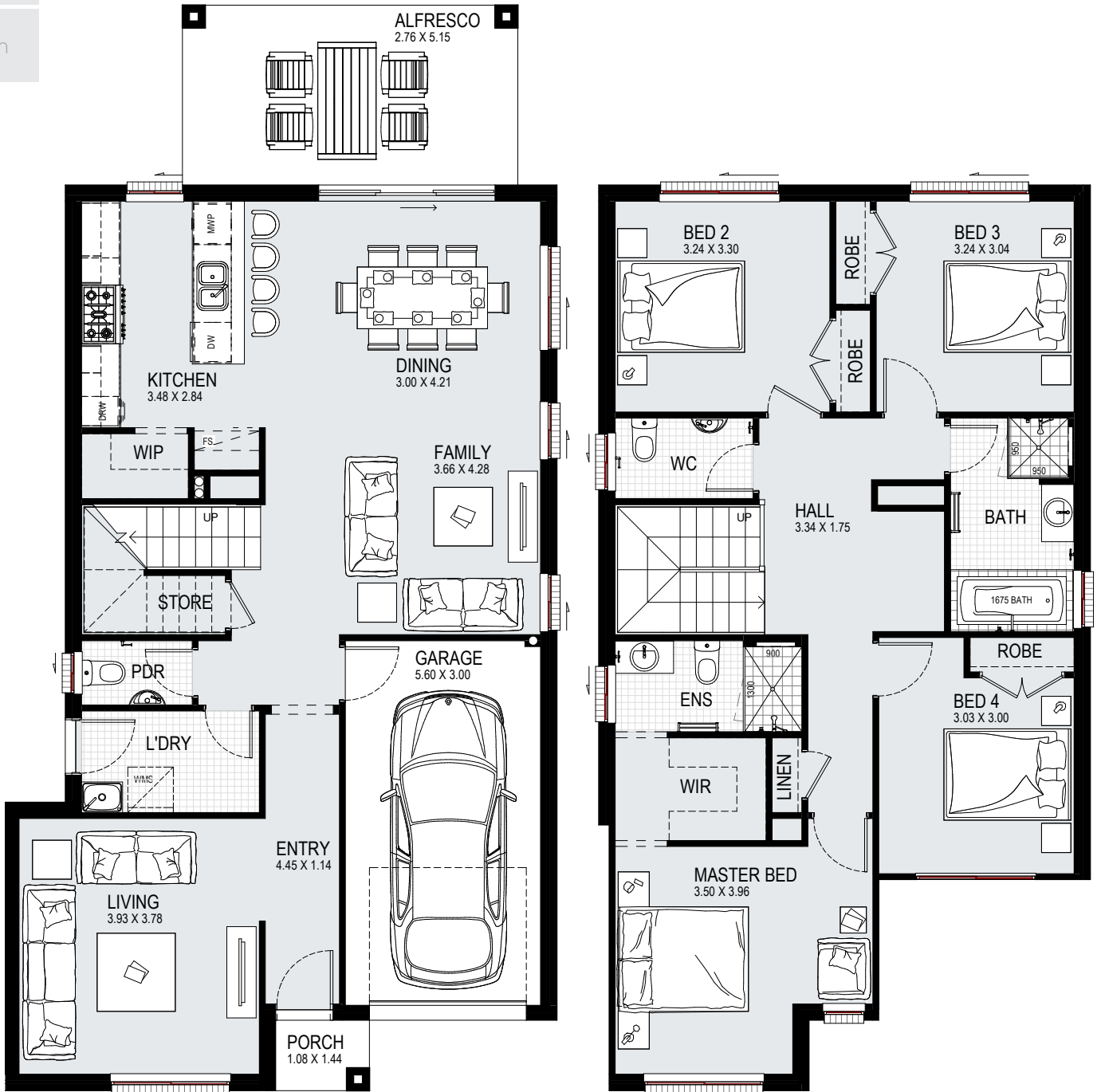
Affinity 40	33
Affinity 41	34
Allure 36	35
Aria 38	36
Austin 48	37
Dynasty 42	38
Evoque 38	39
Glenleigh 36	40
Glenleigh 39	41
Glenleigh 39 MK2	42
Glenleigh 41	43
Glenleigh 41 MK2	44
Infinity 32	45
Jewel 38	46
Mayfair 35	47
Melody 40	48
Melody 43 MK1	49
Melody 43 MK2	50
Melody 43 MK3	51
Melody 43 MK4	52
Trinity 39	53

10m

12.5m

13m

15m



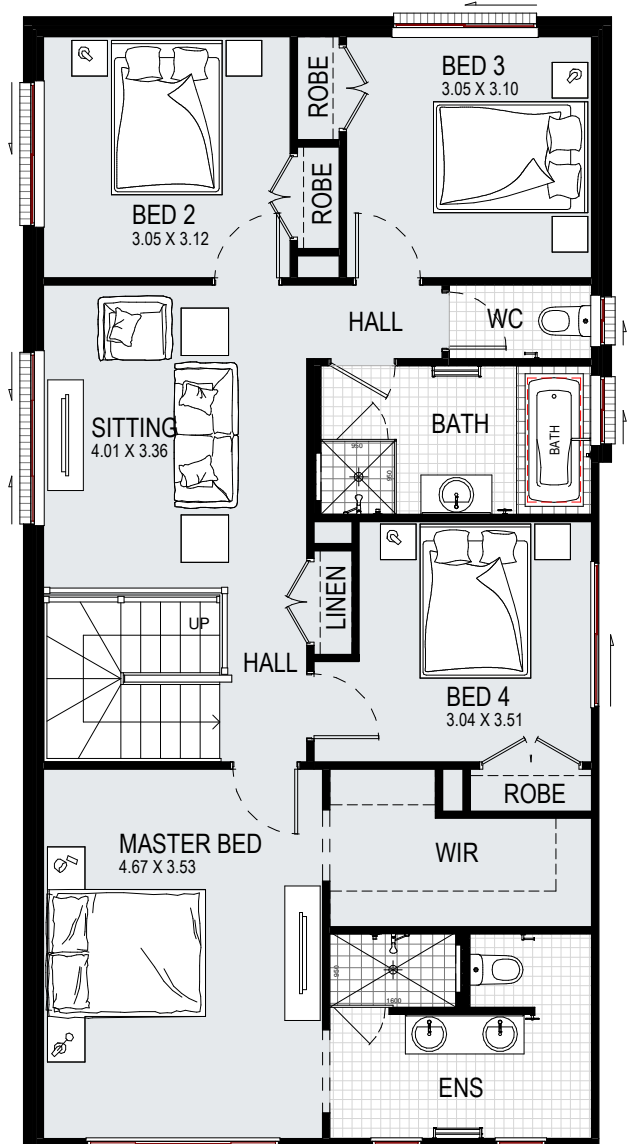
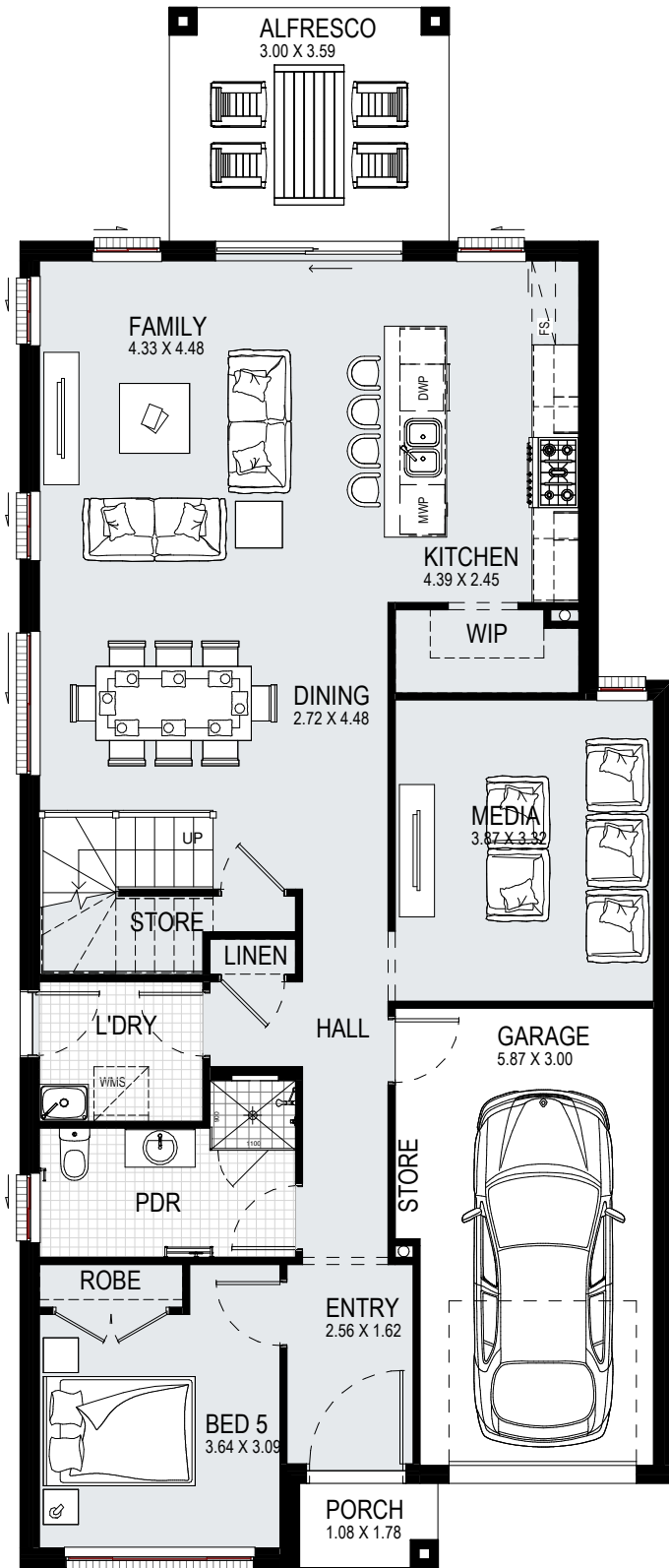
suits
10m+
lot width

CLAREMONT 23

4 2.5 1

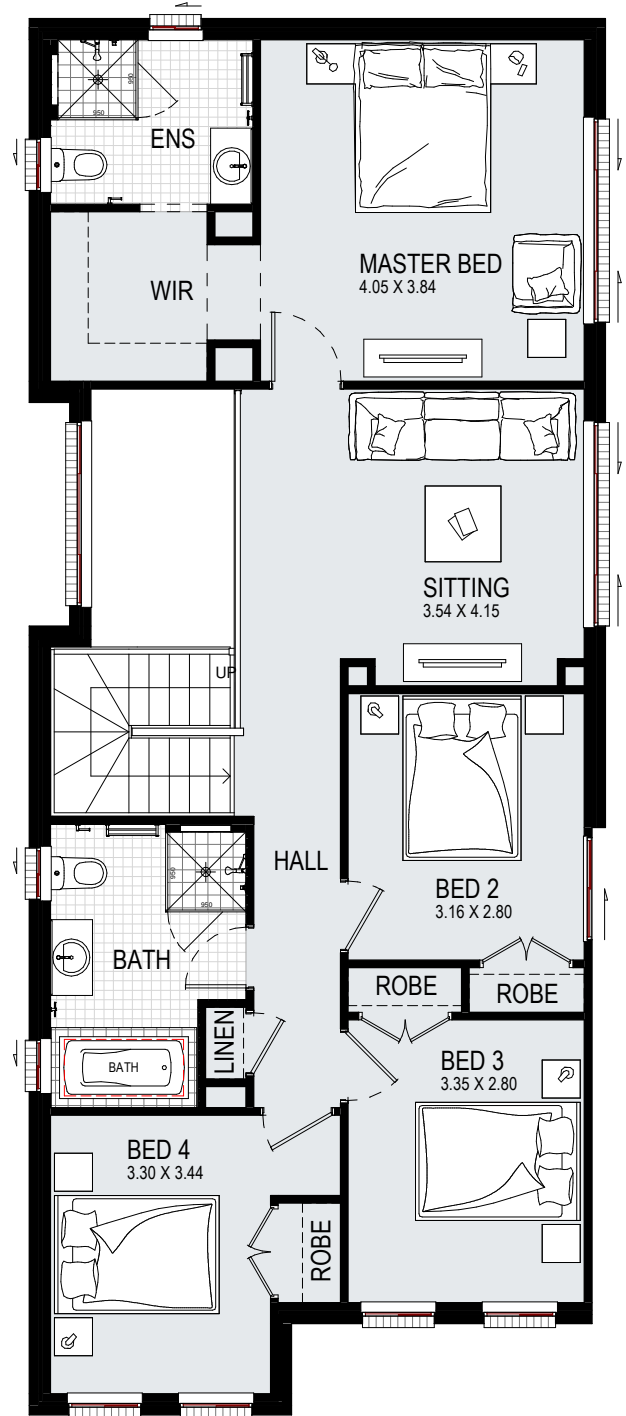
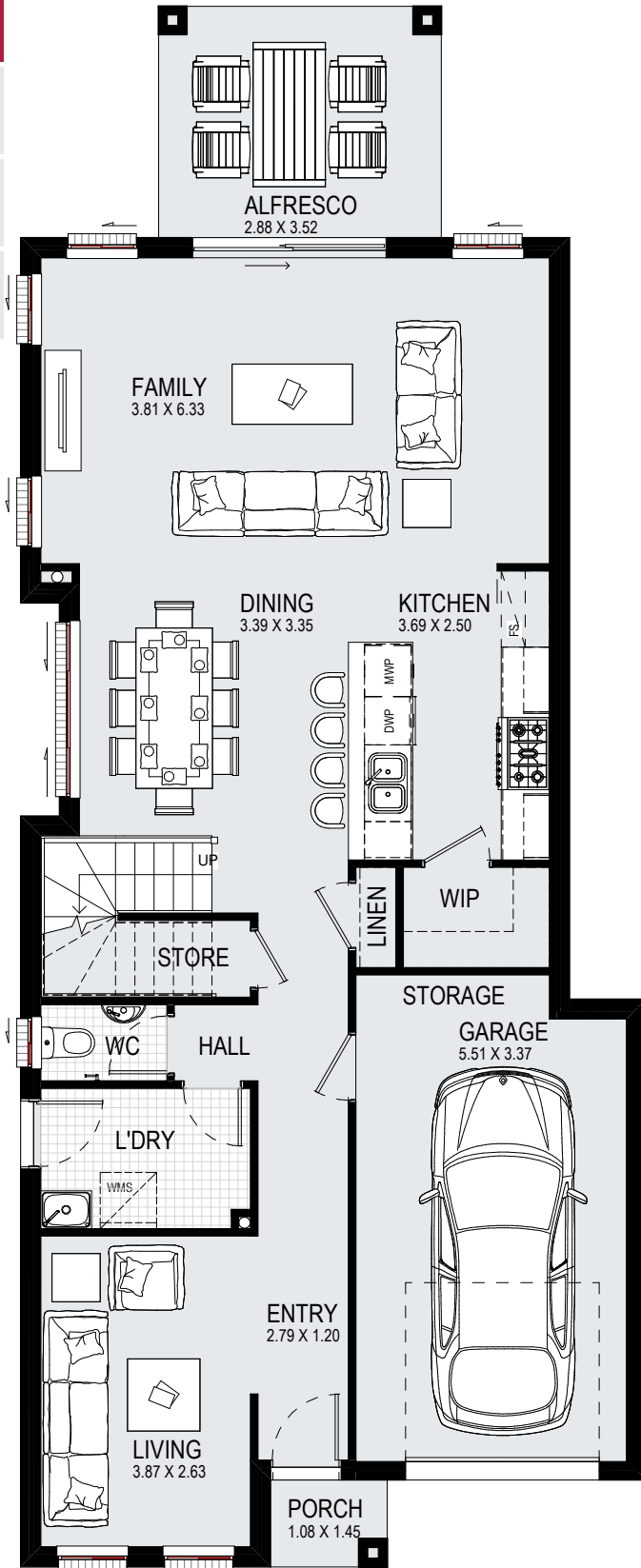
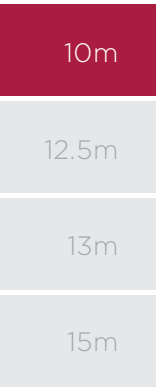
ground:	85.66m ²	garage:	18.95m ²	alfresco:	14.21m ²	width:	8.51m
first:	88.91m ²	porch:	1.56m ²	total:	213.71m ²	depth:	16.67m

- 10m
- 12.5m
- 13m
- 15m



suits 10m+ lot width	CORAL 27						5	3	1
	ground:	111.22m ²	garage:	21.07m ²	alfresco:	10.77m ²	width:	8.39m	
	first:	99.94m ²	porch:	1.92m ²	total:	249.62m ²	depth:	20.03m	

DISCLAIMER: Floorplans, facades and photography are for illustrative purposes and should be used as a guide only. Plans may include upgrade items above the standard specification. Details are correct at the time of printing and are subject to change without notice. Issued 21.12.2023. Lic No. 205 457C.



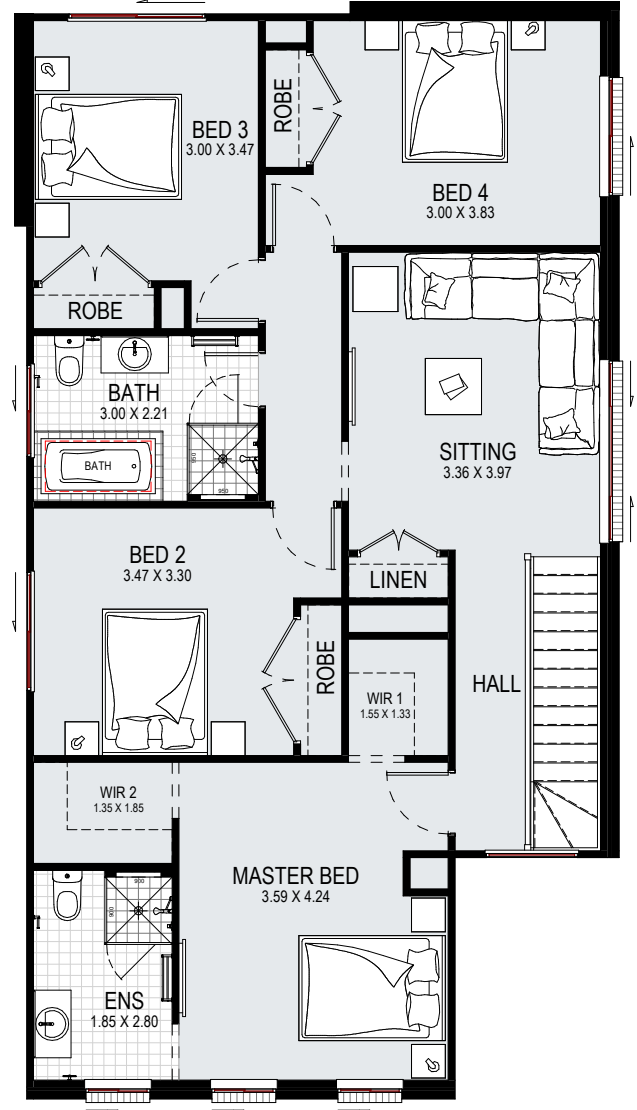
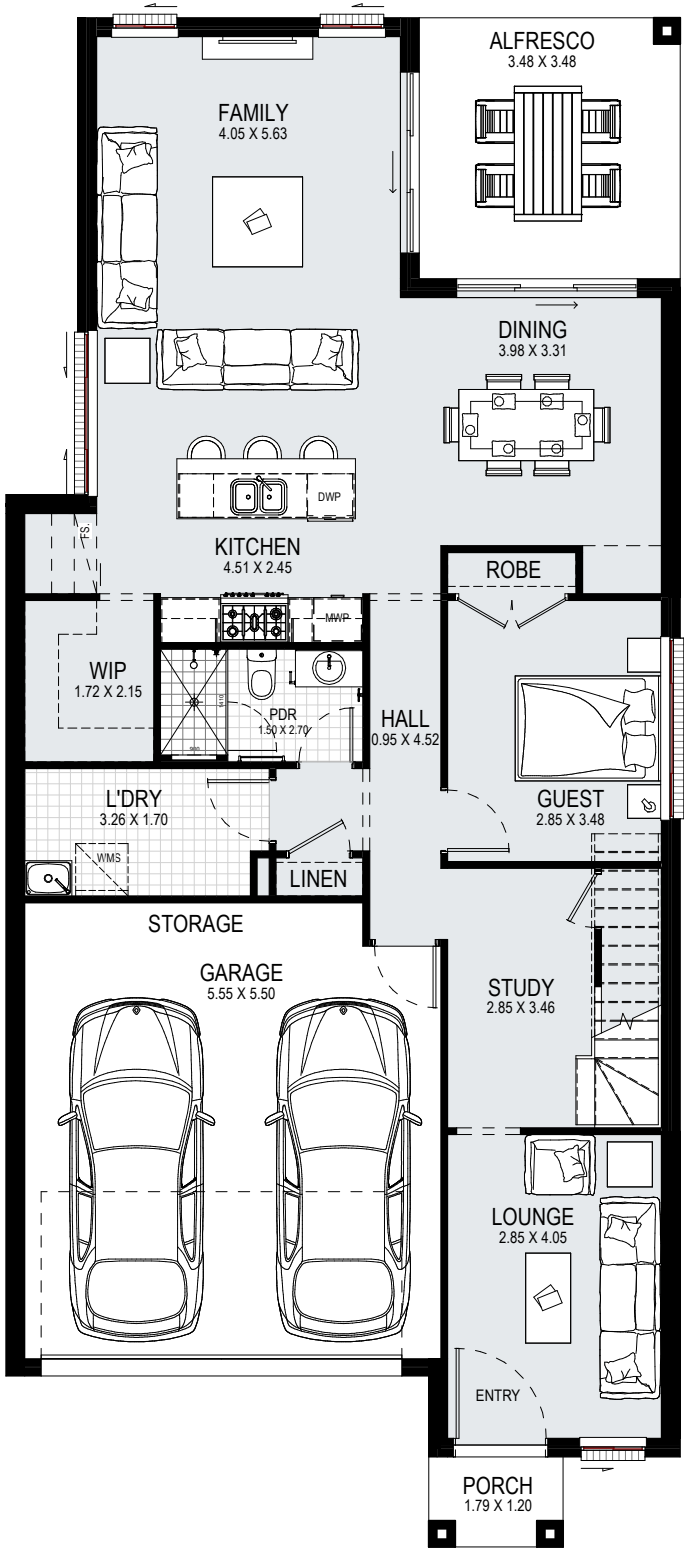
suits 10m+ lot width	EDGECLIFF 25				4	2.5	1	
	ground:	91.02m ²	garage:	22.48m ²	alfresco:	10.14m ²	width:	7.79m
	first:	97.31m ²	porch:	1.57m ²	total:	232.12m ²	depth:	19.43m

10m

12.5m

13m

15m



suits
10m+
lot width

HUDSON 29



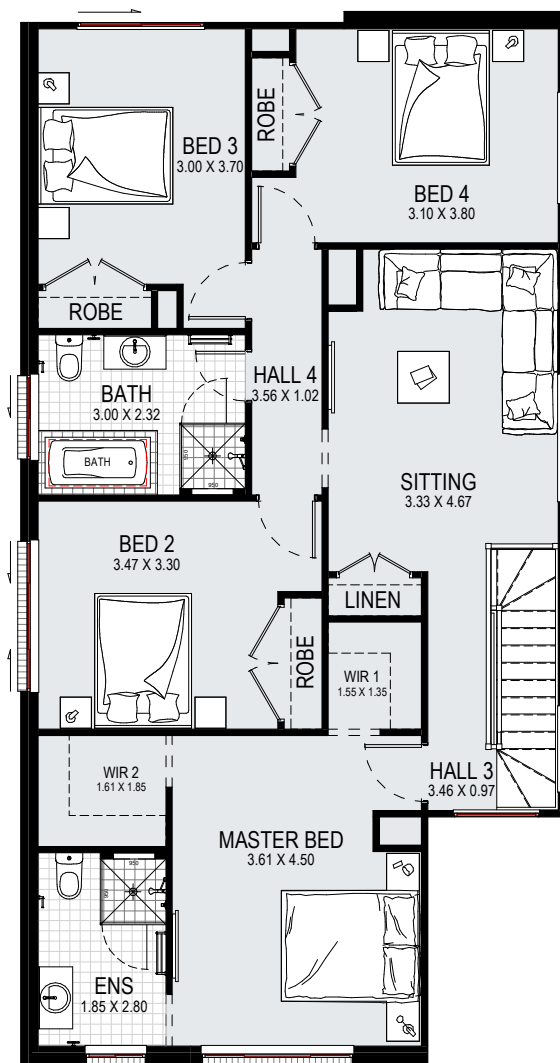
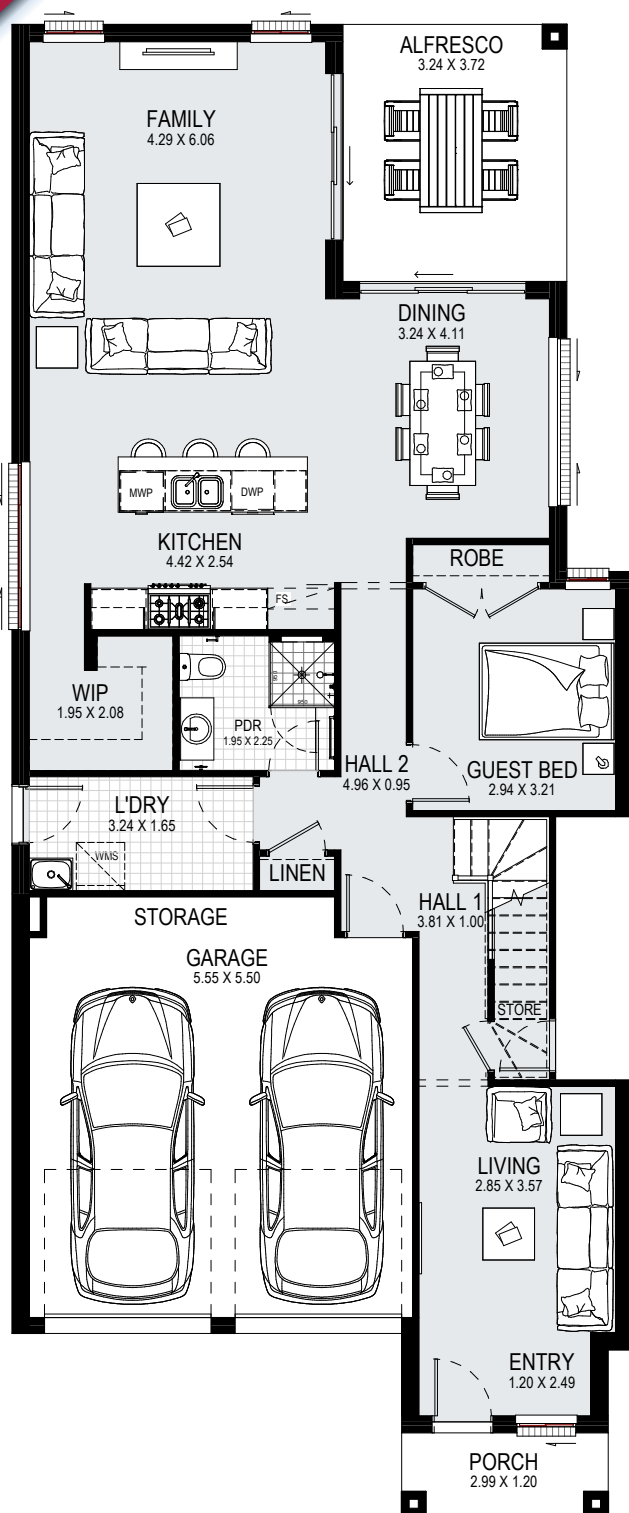
ground:	111.70m ²	garage:	36.51m ²	alfresco:	12.11m ²	width:	8.99m
first:	104.64m ²	porch:	2.15m ²	total:	270.76m ²	depth:	20.39m

DISCLAIMER: Floorplans, facades and photography are for illustrative purposes and should be used as a guide only. Plans may include upgrade items above the standard specification. Details are correct at the time of printing and are subject to change without notice. Issued 21.12.2023. Lic No. 205 457C.

**ON DISPLAY AT
LEPPINGTON LIVING**

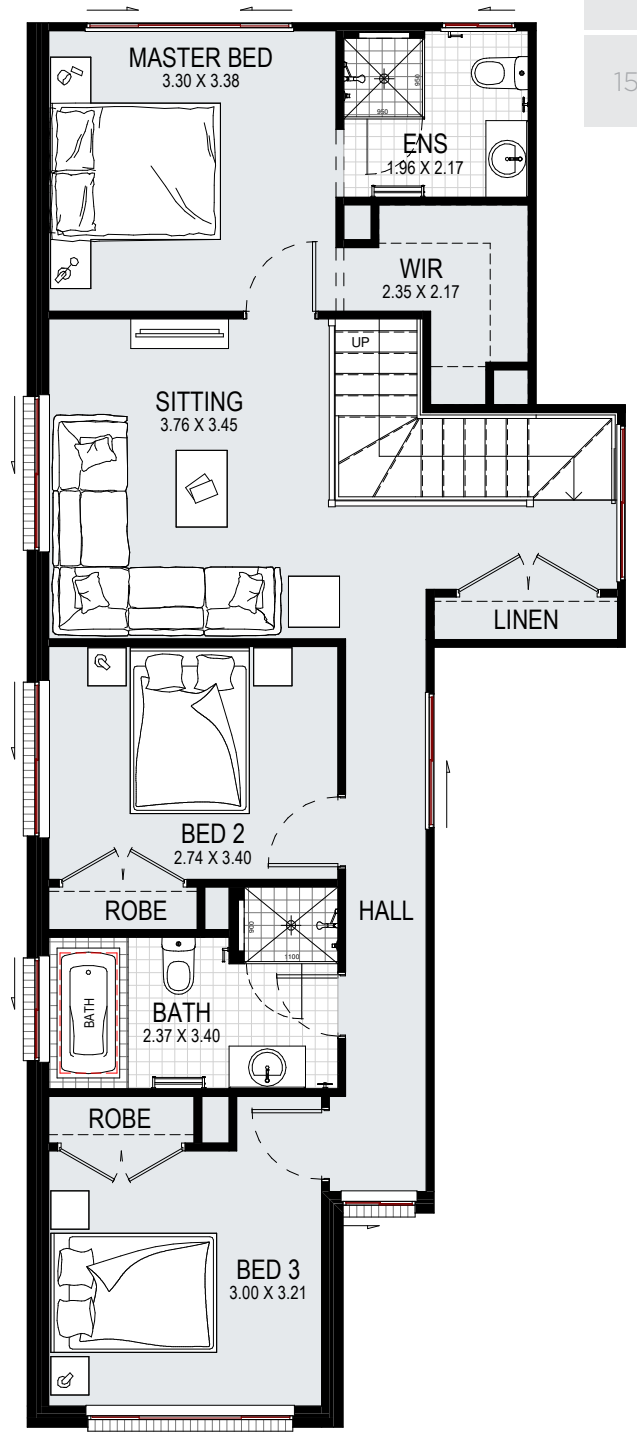
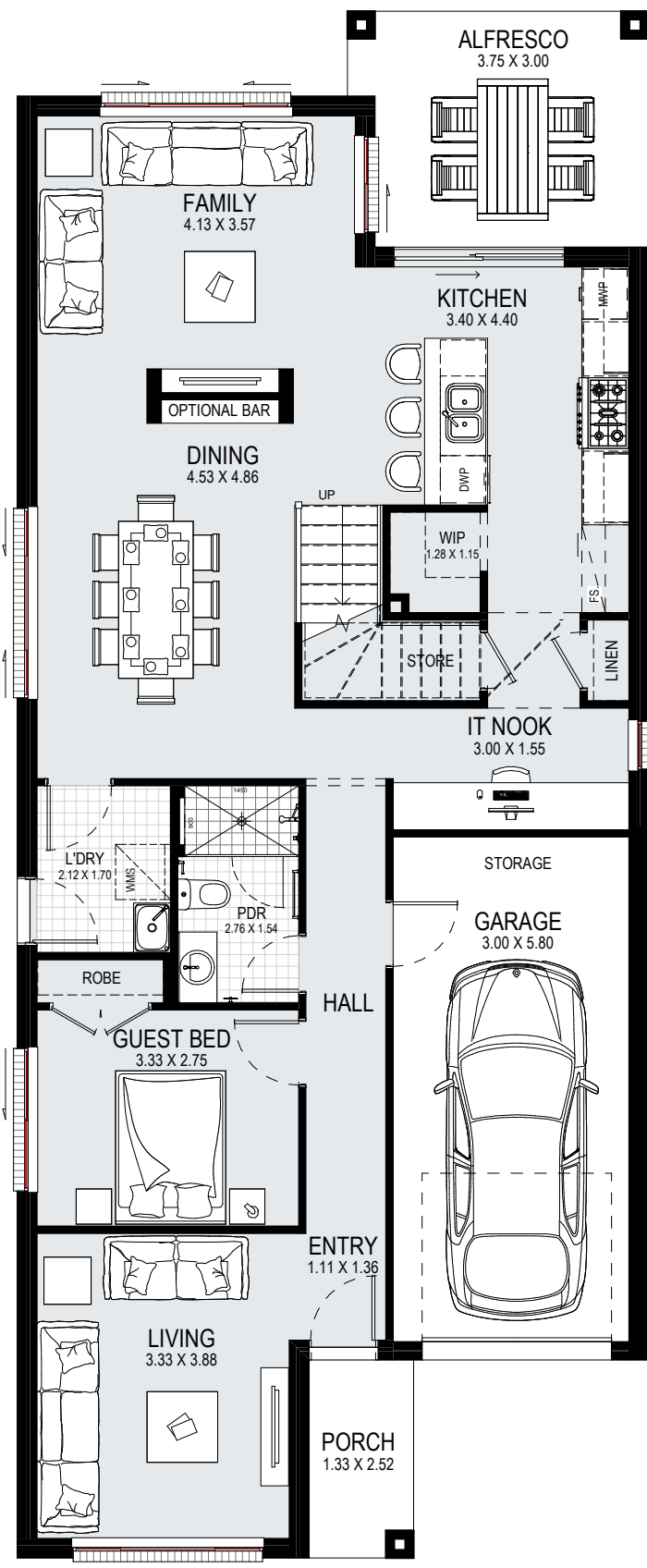


View a virtual tour
of Hudson 30



suits 10m+ lot width	HUDSON 30				5	3	2	
	ground:	114.84m ²	garage:	35.99m ²	alfresco:	12.05m ²	width:	8.99m
	first:	108.87m ²	porch:	3.59m ²	total:	279.20m ²	depth:	24.23m

- 10m
- 12.5m
- 13m
- 15m



suits
10m+
lot width

MELROSE 25



ground:	110.10m ²	garage:	21.61m ²	alfresco:	10.82m ²	width:	8.03m
first:	83.45m ²	porch:	3.35m ²	total:	233.89m ²	depth:	19.67m

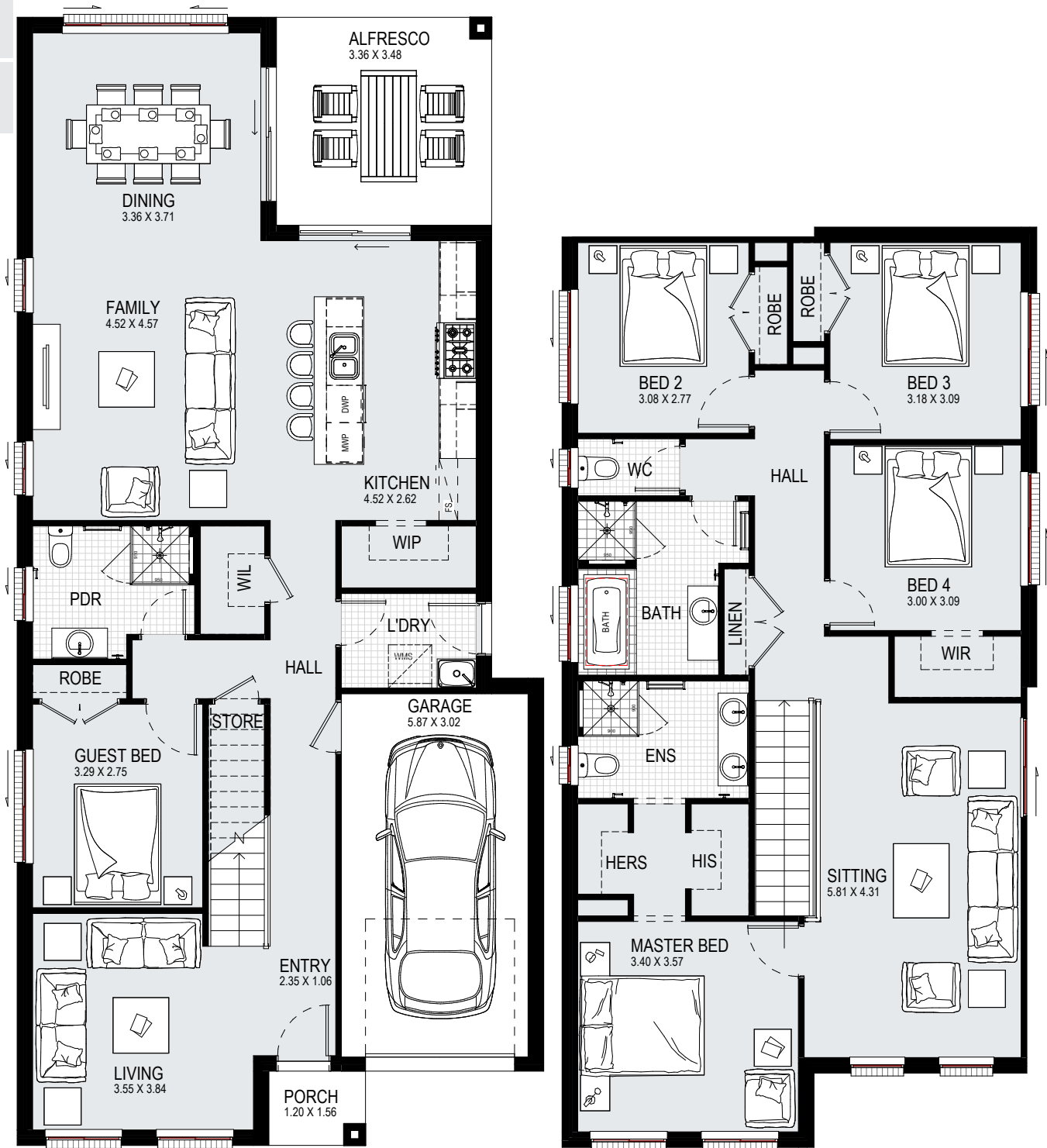
DISCLAIMER: Floorplans, facades and photography are for illustrative purposes and should be used as a guide only. Plans may include upgrade items above the standard specification. Details are correct at the time of printing and are subject to change without notice. Issued 21.12.2023. Lic No. 205 457C.

10m

12.5m

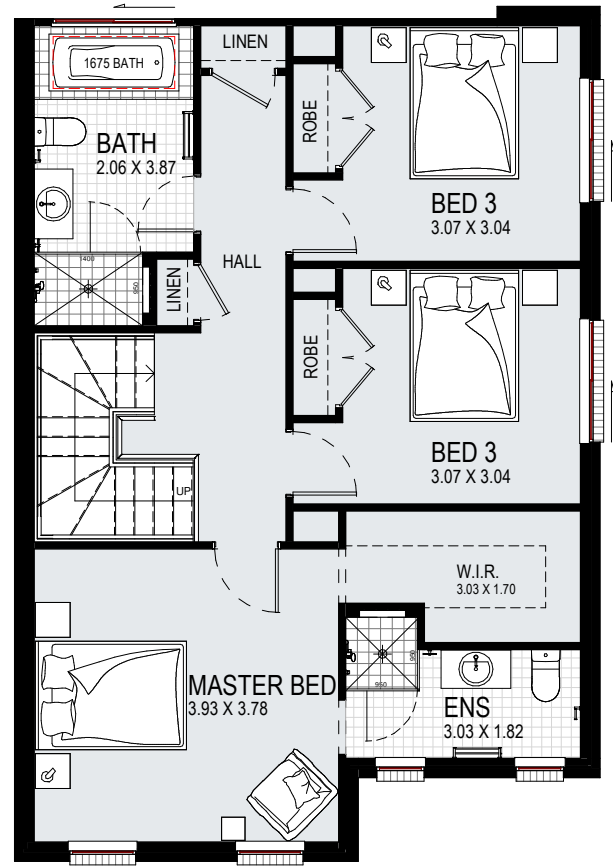
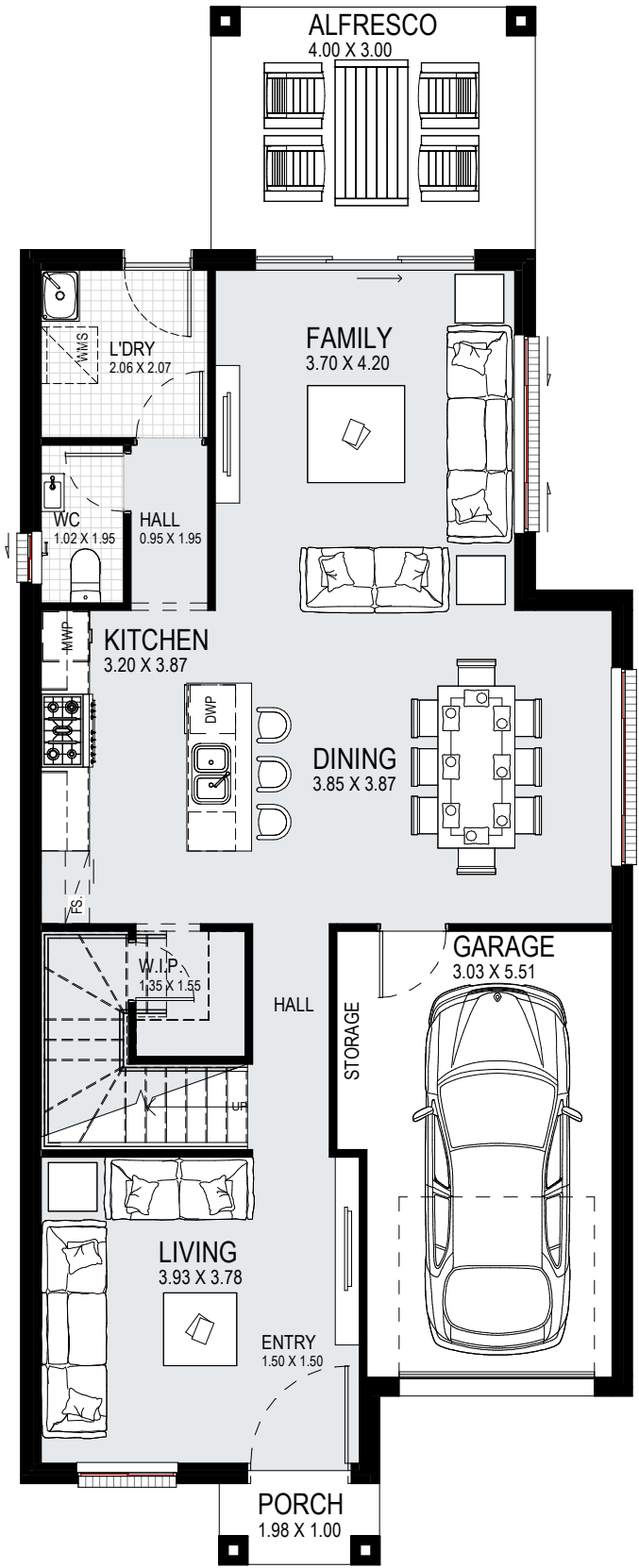
13m

15m



suits 10m+ lot width	NEPEAN 27				5	3	1	
	ground:	108.99m ²	garage:	20.16m ²	alfresco:	11.69m ²	width:	8.51m
	first:	104.62m ²	porch:	1.87m ²	total:	250.83m ²	depth:	18.23m

- 10m
- 12.5m
- 13m
- 15m



suits 10m+ lot width	OSLO 21				3	2.5	1	
	ground:	86.75m ²	garage:	19.83m ²	alfresco:	12.00m ²	width:	7.55m
	first:	74.75m ²	porch:	1.98m ²	total:	199.47m ²	depth:	18.66m

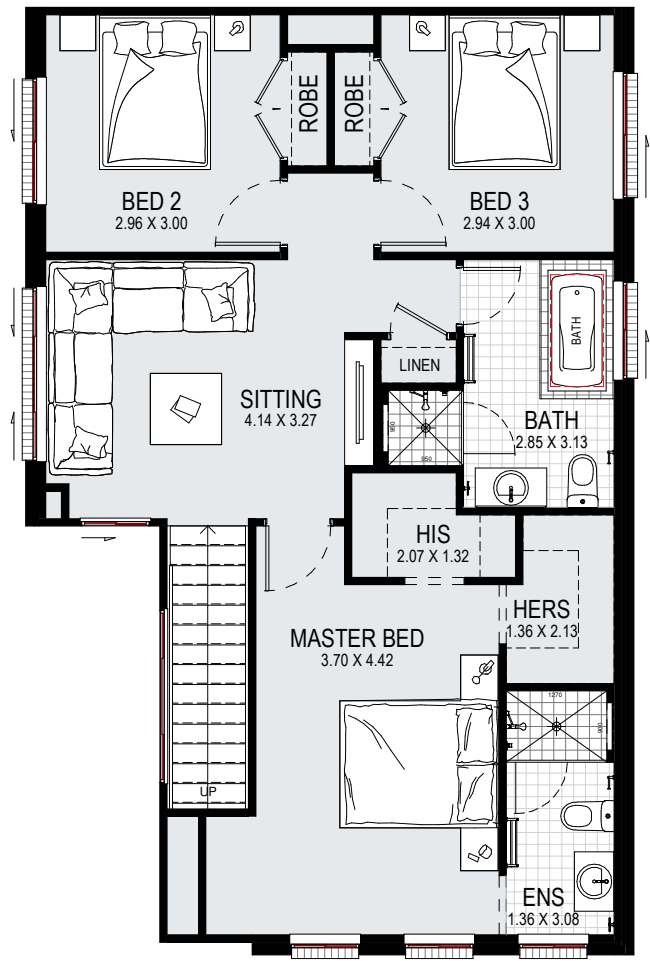
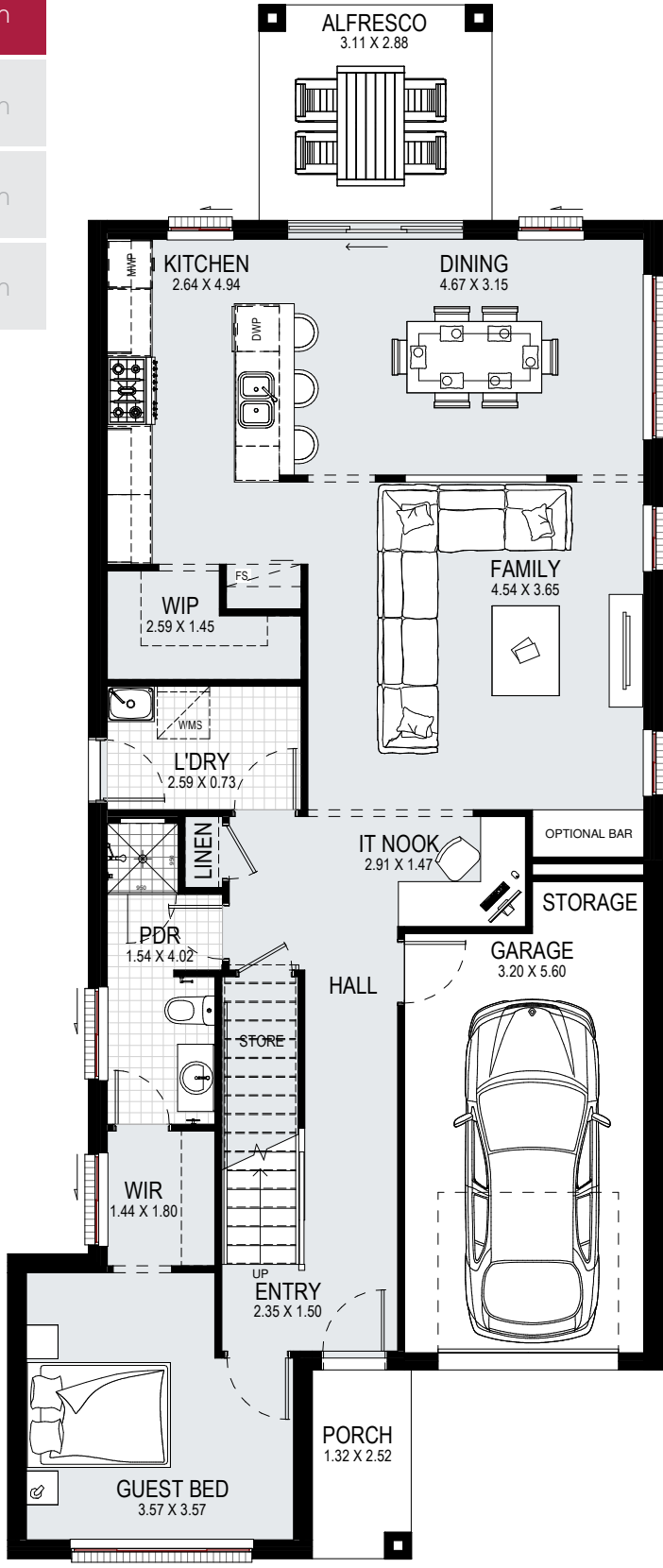
DISCLAIMER: Floorplans, facades and photography are for illustrative purposes and should be used as a guide only. Plans may include upgrade items above the standard specification. Details are correct at the time of printing and are subject to change without notice. Issued 21.12.2023. Lic No. 205 457C.

10m

12.5m

13m

15m



suits
10m+
lot width

ROCHESTER 24



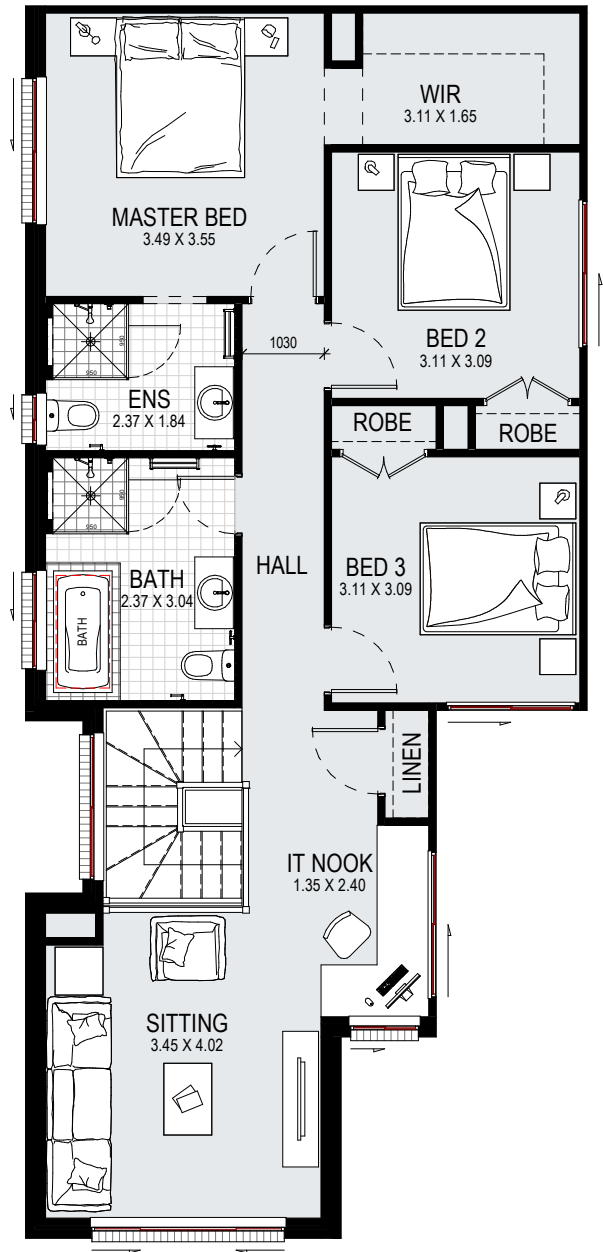
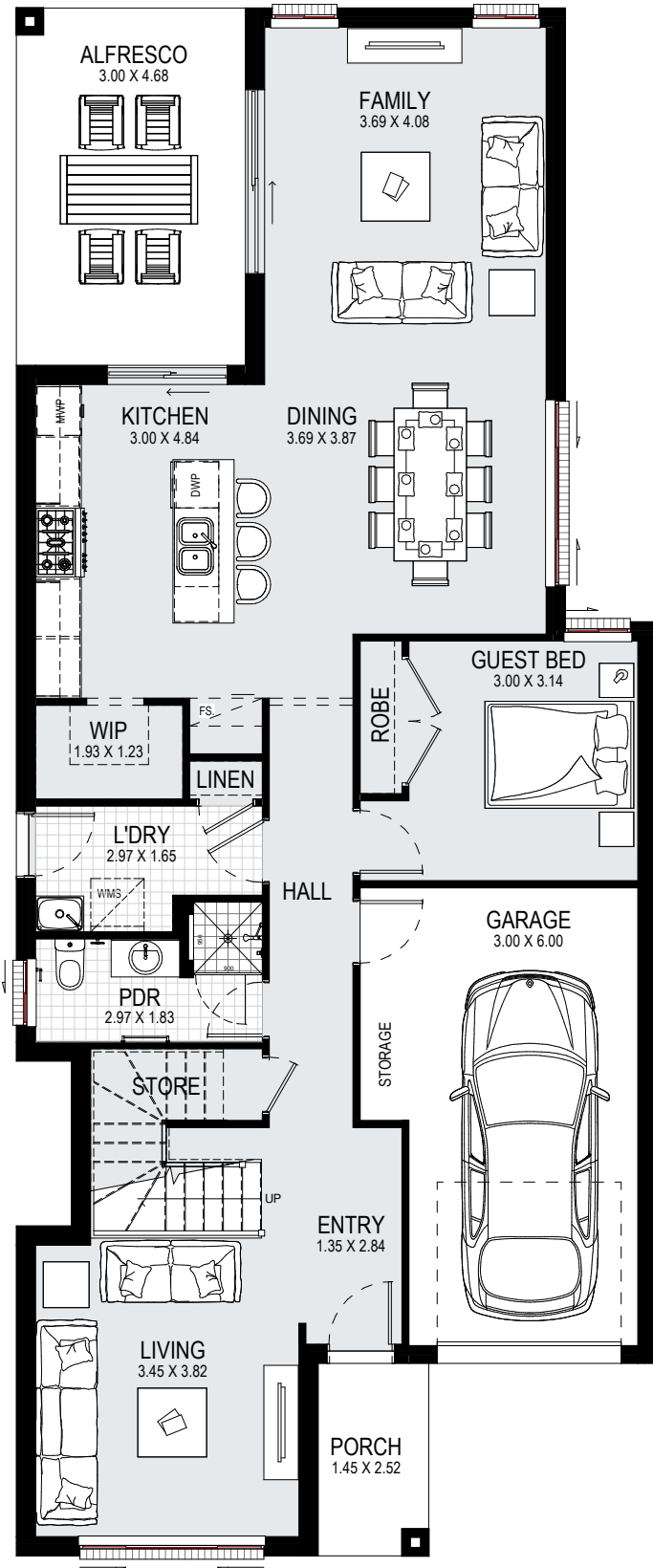
ground:	107.94m ²	garage:	21.73m ²	alfresco:	8.96m ²	width:	8.75m
first:	78.66m ²	porch:	3.33m ²	total:	224.28m ²	depth:	20.75m

10m

12.5m

13m

15m



suits
10m+
lot width

SENATOR 26



ground:	111.51m ²	garage:	22.20m ²	alfresco:	14.04m ²	width:	8.39m
first:	87.19m ²	porch:	3.65m ²	total:	242.91m ²	depth:	20.27m

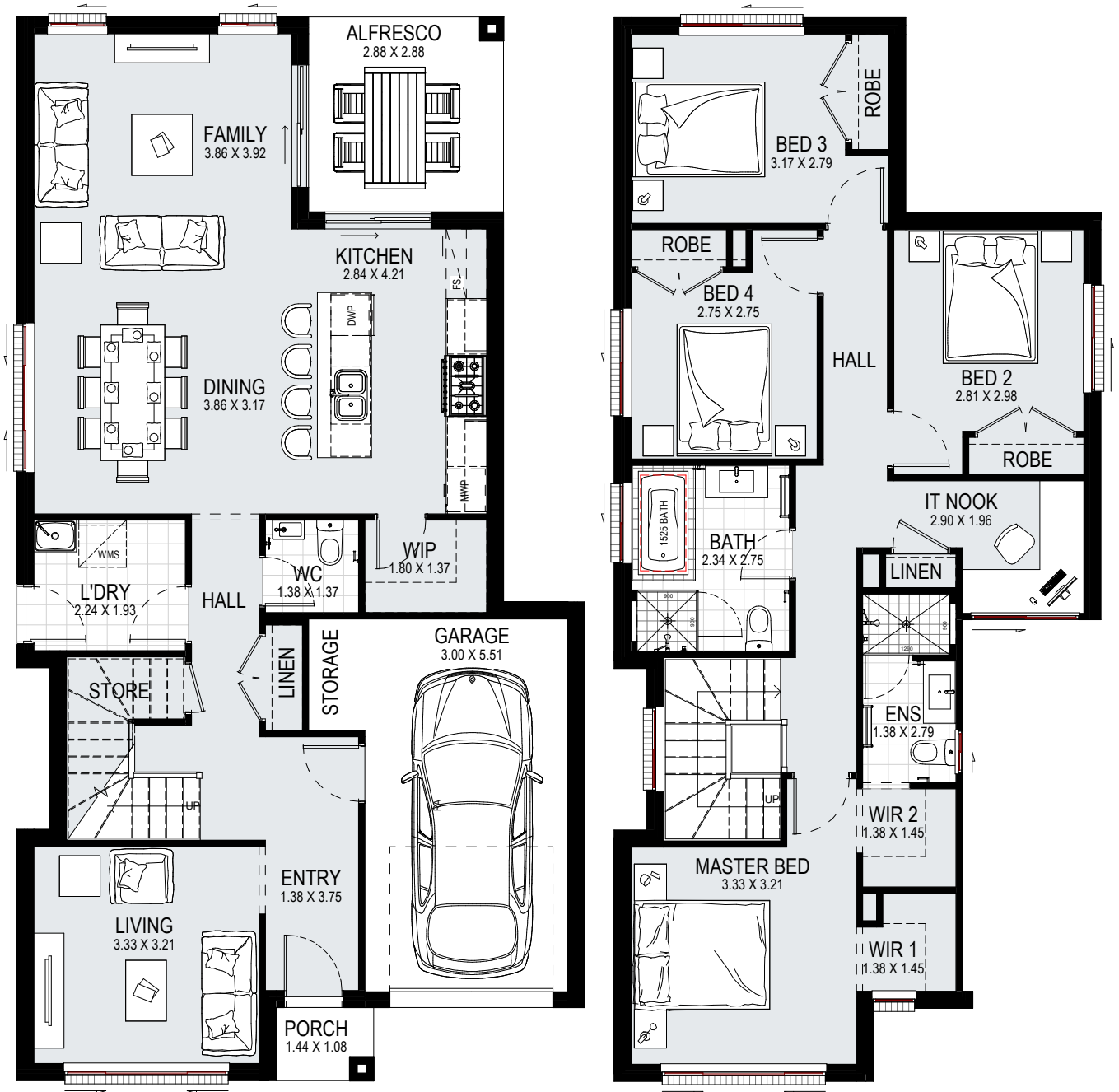
DISCLAIMER: Floorplans, facades and photography are for illustrative purposes and should be used as a guide only. Plans may include upgrade items above the standard specification. Details are correct at the time of printing and are subject to change without notice. Issued 21.12.2023. Lic No. 205 457C.

10m

12.5m

13m

15m



suits
10m+
lot width

WESTCHESTER 22



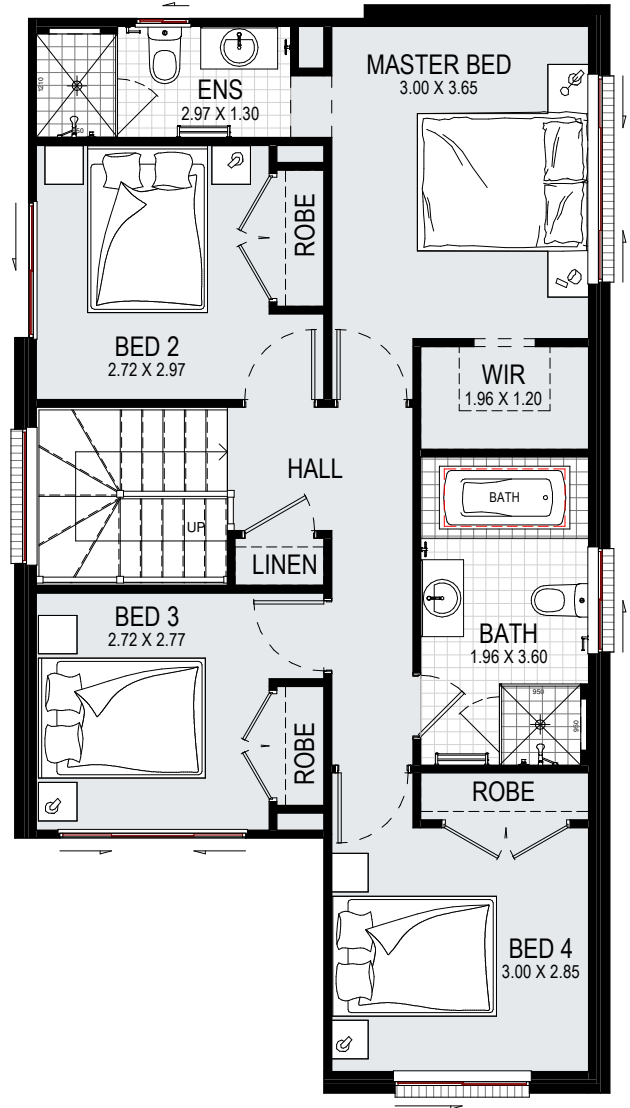
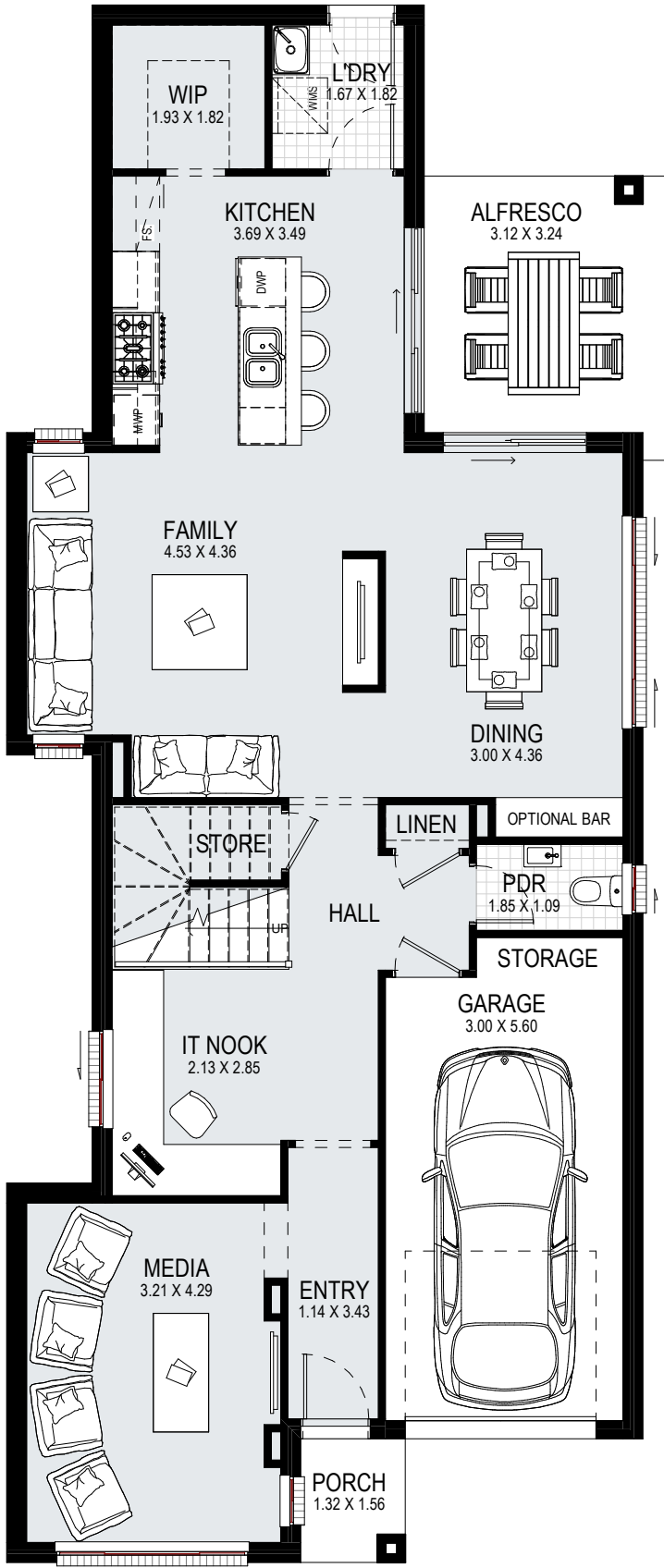
ground:	86.63m ²	garage:	20.44m ²	alfresco:	8.29m ²	width:	8.39m
first:	83.43m ²	porch:	1.56m ²	total:	205.04m ²	depth:	15.71m

10m

12.5m

13m

15m



suits
10m+
lot width

WOODSIDE 23



ground:	104.63m ²	garage:	20.00m ²	alfresco:	10.23m ²	width:	8.39m
first:	71.73m ²	porch:	2.06m ²	total:	213.29m ²	depth:	19.57m

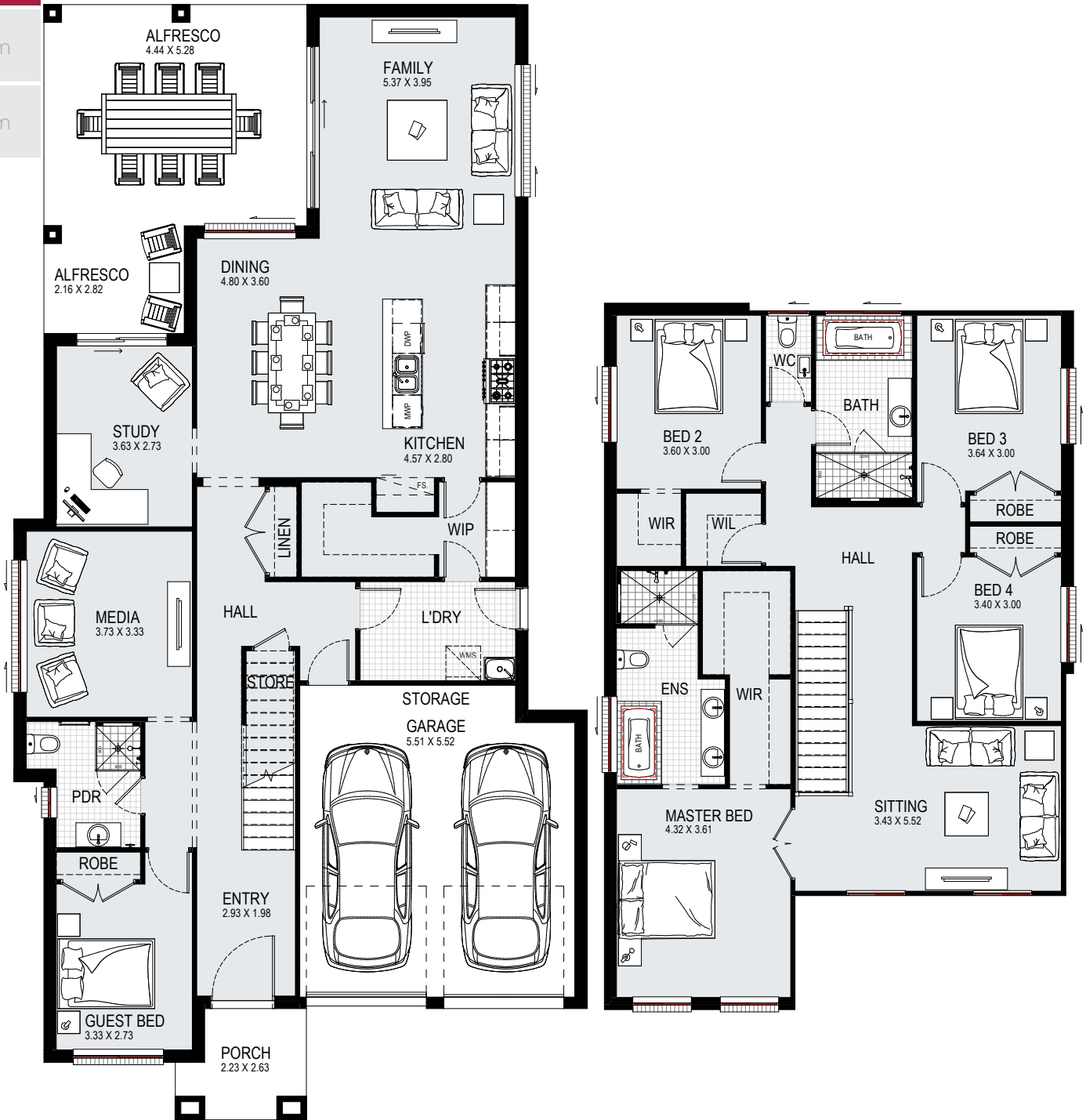
DISCLAIMER: Floorplans, facades and photography are for illustrative purposes and should be used as a guide only. Plans may include upgrade items above the standard specification. Details are correct at the time of printing and are subject to change without notice. Issued 21.12.2023. Lic No. 205 457C.

10m

12.5m

13m

15m



suits
12.5m+
lot width

AFFINITY 37



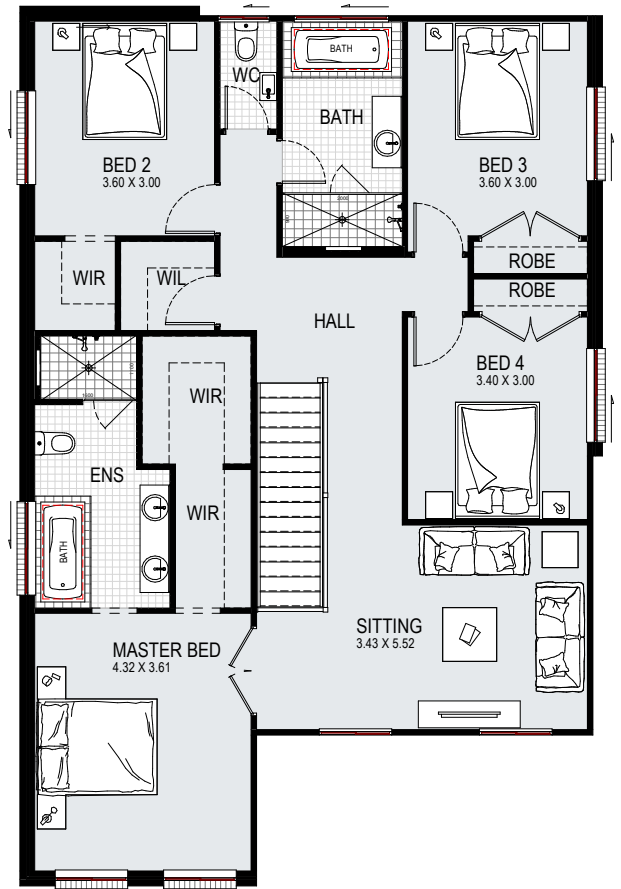
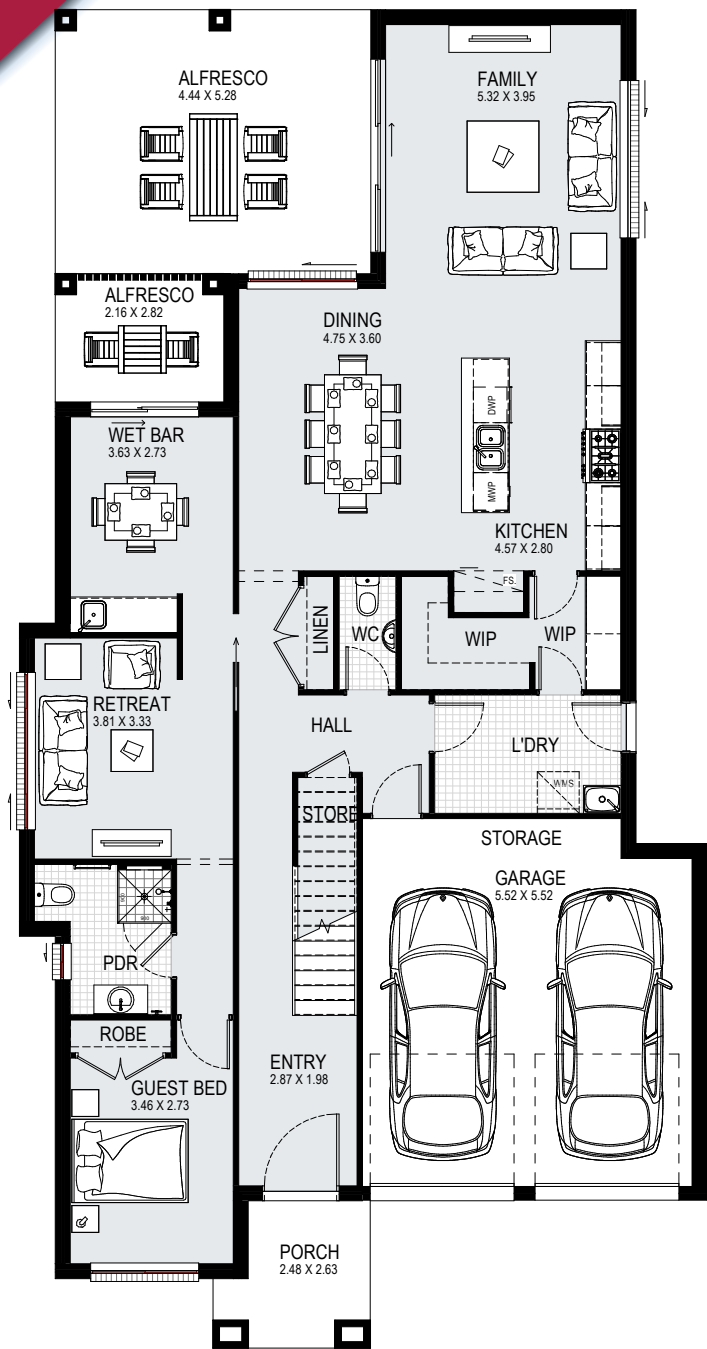
ground:	143.25m ²	garage:	36.85m ²	alfresco:	29.53m ²	width:	11.51m
first:	122.55m ²	porch:	5.23m ²	total:	341.63m ²	depth:	22.38m

**ON DISPLAY AT
HOMEWORLD MARSDEN PARK**



View a virtual tour of Affinity 37 MK2

- 10m
- 12.5m
- 13m
- 15m



suits 12.5m+ lot width	AFFINITY 37 MK2				5	3.5	2	
	ground:	143.18m ²	garage:	36.54m ²	alfresco:	29.53m ²	width:	11.51m
	first:	122.76m ²	porch:	5.77m ²	total:	341.98m ²	depth:	22.52m

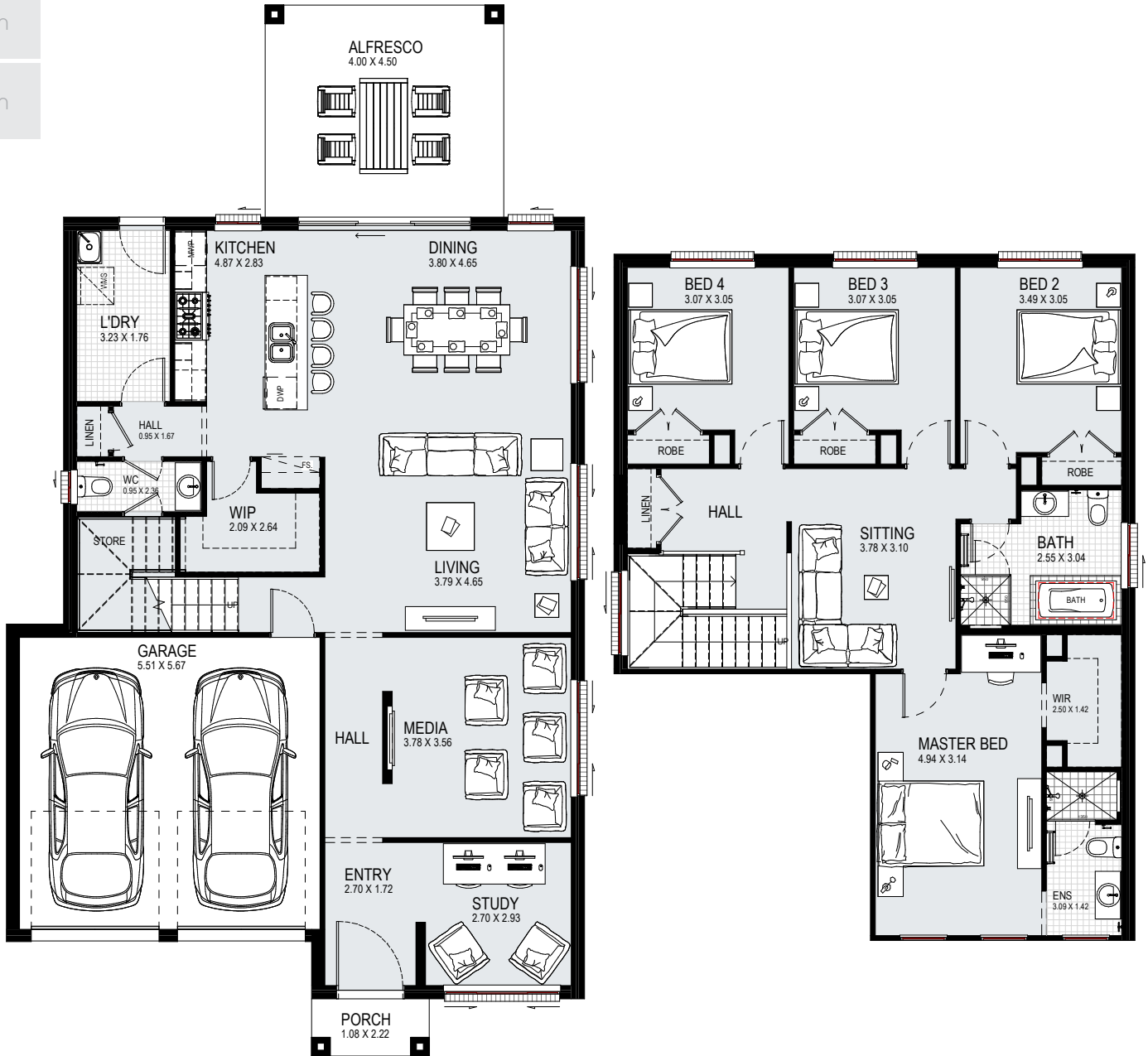
DISCLAIMER: Floorplans, facades and photography are for illustrative purposes and should be used as a guide only. Plans may include upgrade items above the standard specification. Details are correct at the time of printing and are subject to change without notice. Issued 21.12.2023. Lic No. 205 457C.

10m

12.5m

13m

15m



suits 12.5m+ lot width	ARCHER 29				4	2.5	2	
	ground:	112.16m ²	garage:	34.25m ²	alfresco:	18.00m ²	width:	10.91m
	first:	97.39m ²	porch:	2.40m ²	total:	269.76m ²	depth:	19.95m

10m

12.5m

13m

15m



suits
12.5m+
lot width

ASTORIA 28



ground:	119.59m ²	garage:	35.70m ²	alfresco:	11.23m ²	width:	11.51m
first:	89.29m ²	porch:	1.85m ²	total:	261.61m ²	depth:	17.39m

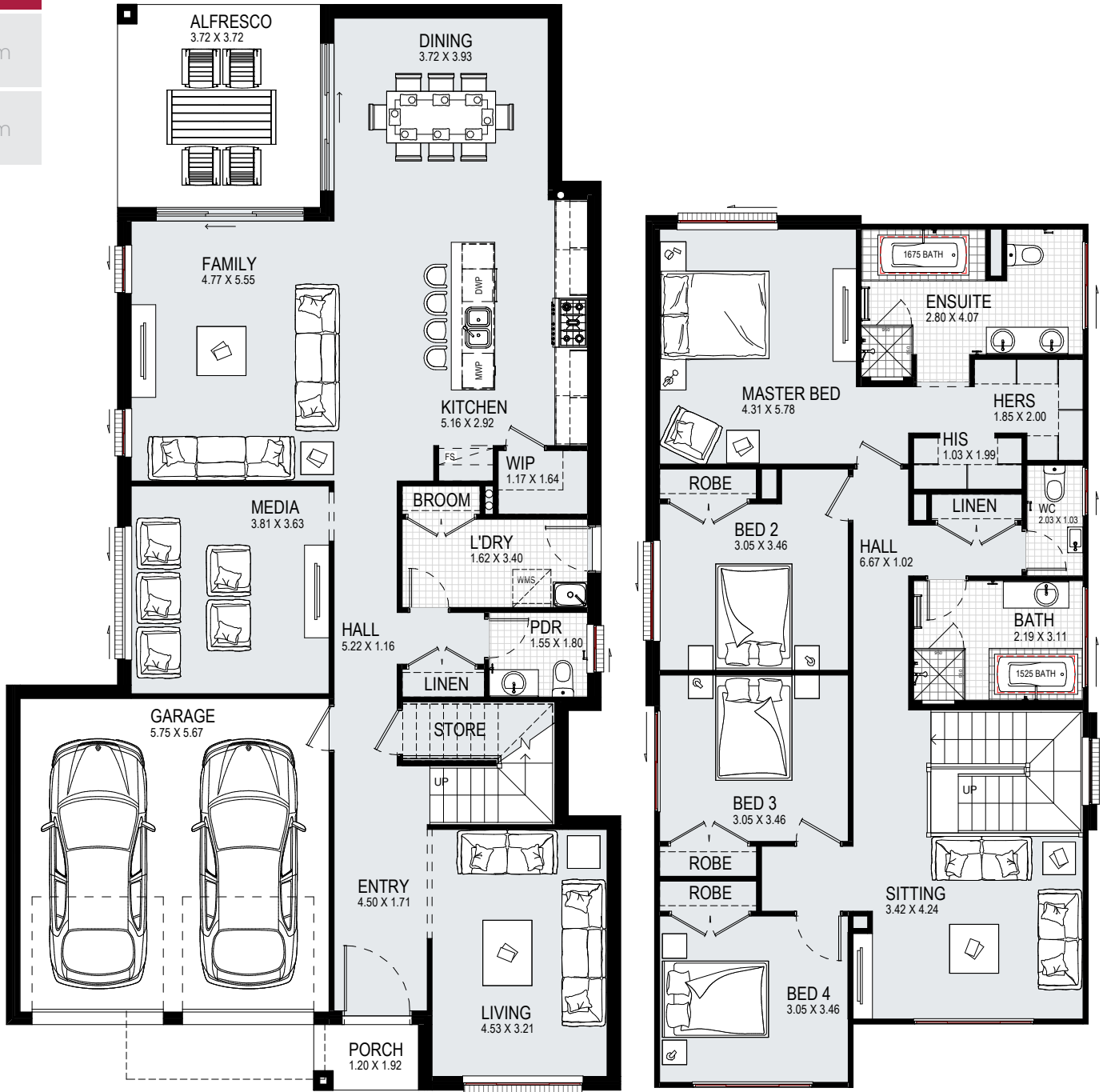
DISCLAIMER: Floorplans, facades and photography are for illustrative purposes and should be used as a guide only. Plans may include upgrade items above the standard specification. Details are correct at the time of printing and are subject to change without notice. Issued 21.12.2023. Lic No. 205 457C.

10m

12.5m

13m

15m



suits
12.5m+
lot width

BRONTE 33 MK1



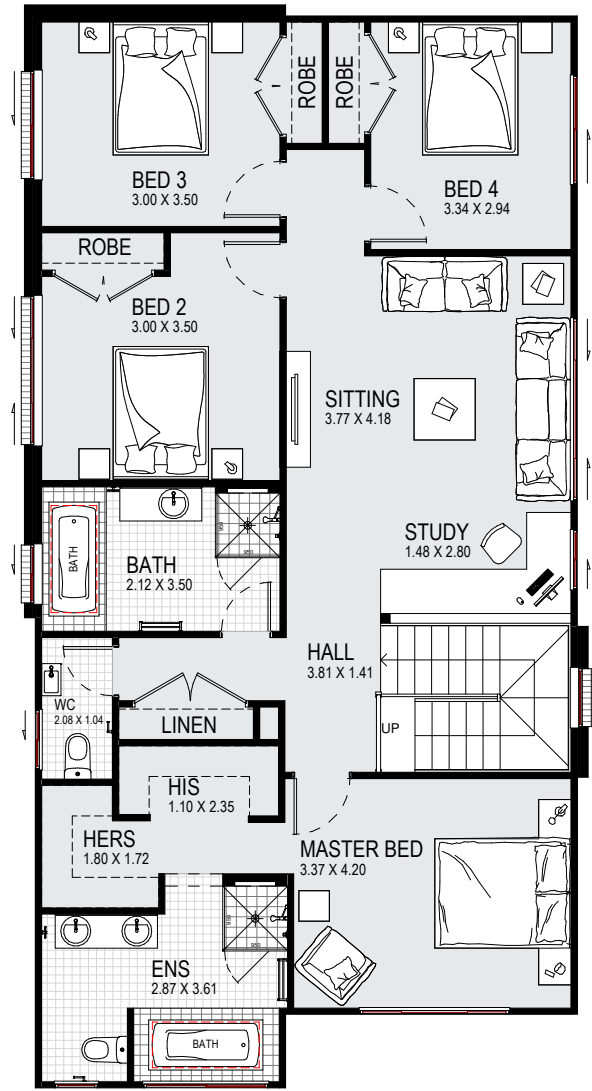
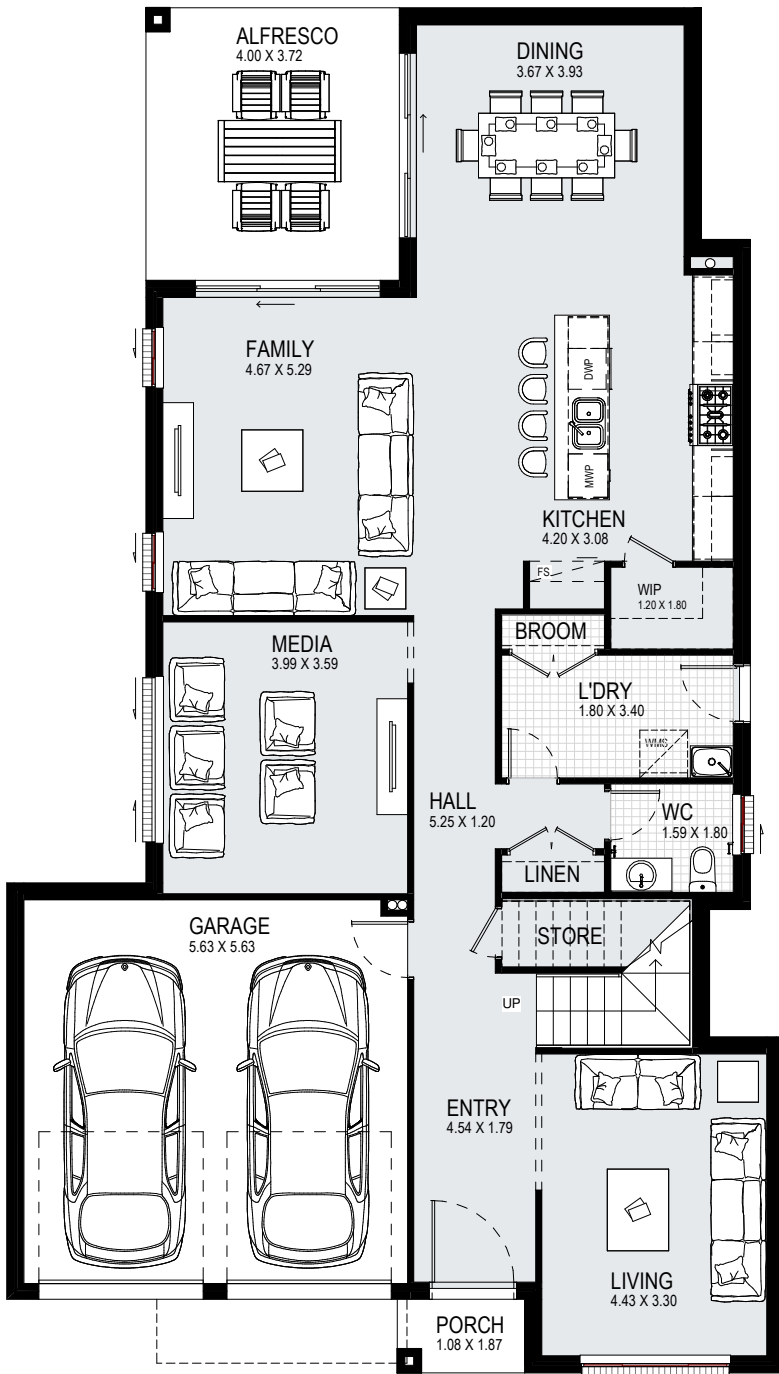
ground:	131.26m ²	garage:	35.91m ²	alfresco:	13.84m ²	width:	11.27m
first:	116.98m ²	porch:	2.30m ²	total:	306.57m ²	depth:	19.91m

10m

12.5m

13m

15m



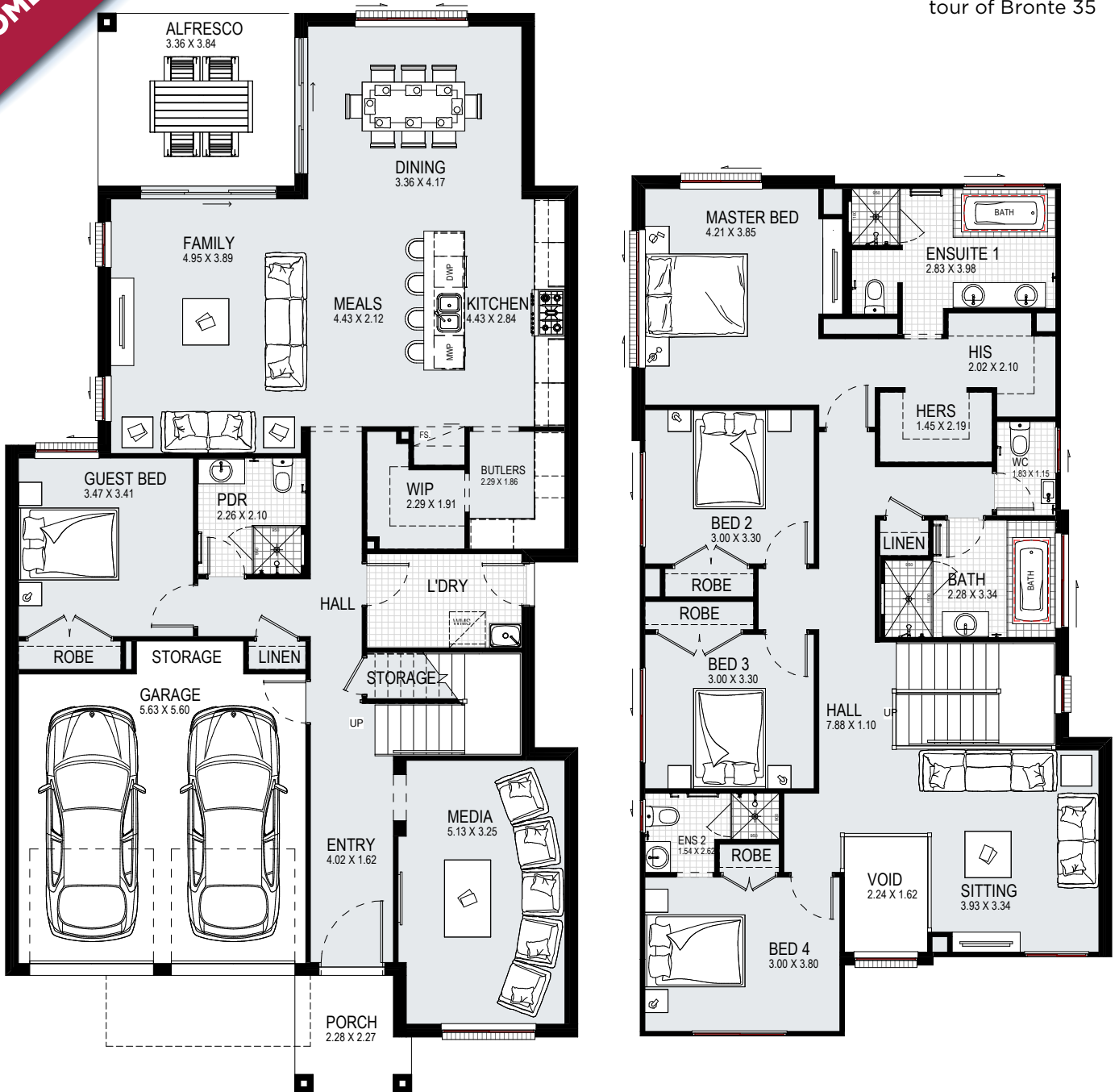
suits 12.5m+ lot width	BRONTE 33 MK2				4	2.5	2	
	ground:	133.12m ²	garage:	34.97m ²	alfresco:	14.88m ²	width:	11.40m
	first:	116.69m ²	porch:	2.02m ²	total:	307.80m ²	depth:	20.03m

DISCLAIMER: Floorplans, facades and photography are for illustrative purposes and should be used as a guide only. Plans may include upgrade items above the standard specification. Details are correct at the time of printing and are subject to change without notice. Issued 21.12.2023. Lic No. 205 457C.

**ON DISPLAY AT
HOMEWORLD BOX HILL**



View a virtual
tour of Bronte 35



suits 12.5m+ lot width	BRONTE 35				5	4	2
	ground:	143.43m ²	garage:	35.62m ²	alfresco:	12.90m ²	width:
first:	126.03m ²	porch:	4.76m ²	total:	332.61m ²	depth:	20.09m

**ON DISPLAY AT
HOMEWORLD MARSDEN PARK**



View a virtual tour of Coral 29

- 10m
- 12.5m
- 13m
- 15m



suits 12.5m+ lot width	CORAL 29				5	3	2	
	ground:	111.78m ²	garage:	37.41m ²	alfresco:	10.77m ²	width:	10.79m
	first:	99.94m ²	porch:	1.94m ²	total:	266.54m ²	depth:	20.03m

DISCLAIMER: Floorplans, facades and photography are for illustrative purposes and should be used as a guide only. Plans may include upgrade items above the standard specification. Details are correct at the time of printing and are subject to change without notice. Issued 21.12.2023. Lic No. 205 457C.

**ON DISPLAY AT
HOMEWORLD BOX HILL**



View a virtual
tour of Empire 32



suits 12.5m+ lot width	EMPIRE 32				4	3	2	
	ground:	132.39m ²	garage:	35.77m ²	alfresco:	21.34m ²	width:	10.91m
	first:	99.55m ²	porch:	1.68m ²	total:	298.29m ²	depth:	19.07m



View a virtual tour of Iris 32

10m

12.5m

13m

15m



suits 12.5m+ lot width	IRIS 32					4	2.5	2
	ground:	123.42m ²	garage:	33.77m ²	alfresco:	19.91m ²	width:	11.27m
	first:	111.70m ²	porch:	2.95m ²	total:	297.28m ²	depth:	20.39m

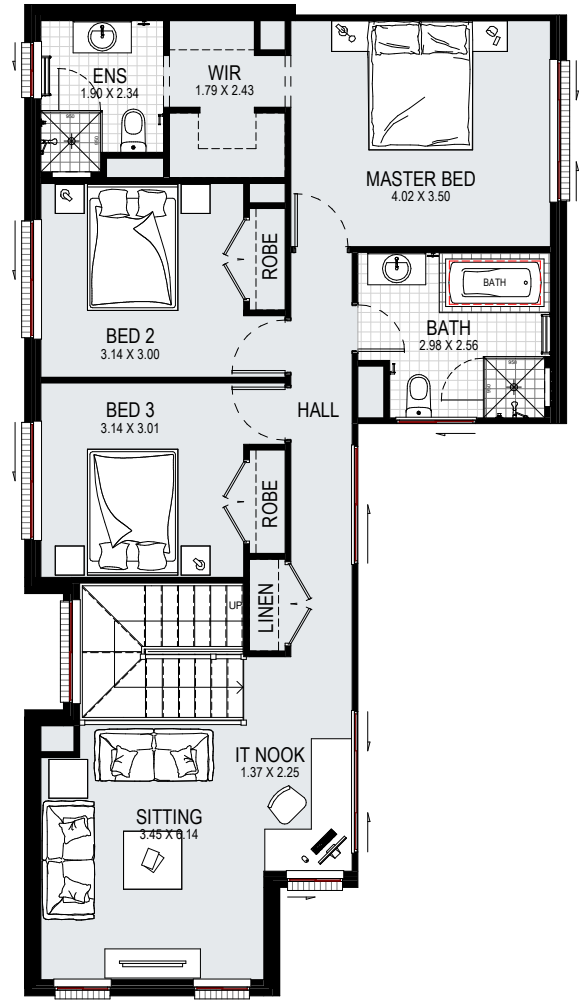
DISCLAIMER: Floorplans, facades and photography are for illustrative purposes and should be used as a guide only. Plans may include upgrade items above the standard specification. Details are correct at the time of printing and are subject to change without notice. Issued 21.12.2023. Lic No. 205 457C.

10m

12.5m

13m

15m



suits
12.5m+
lot width

LANCASTER 28



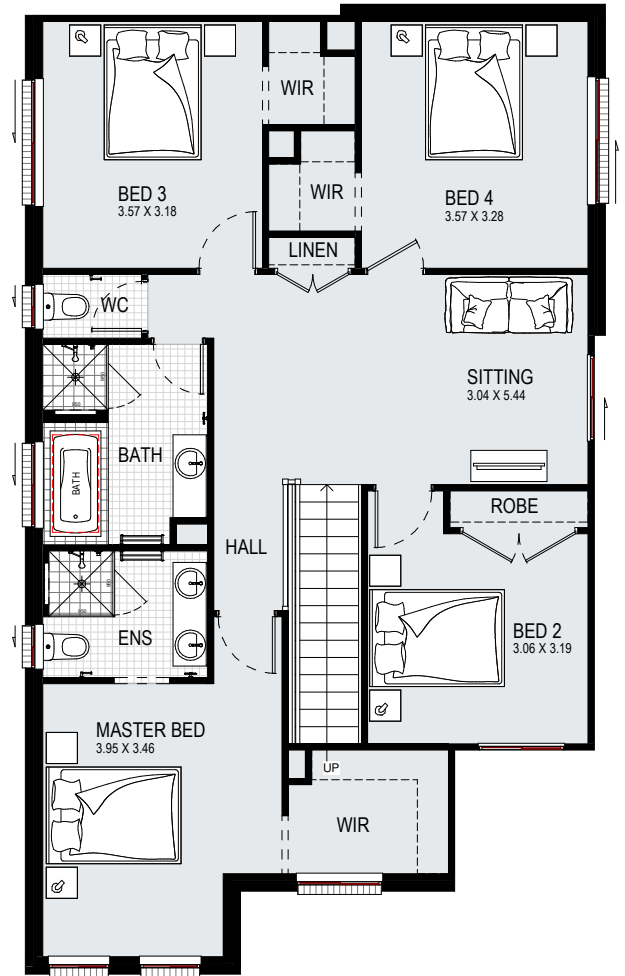
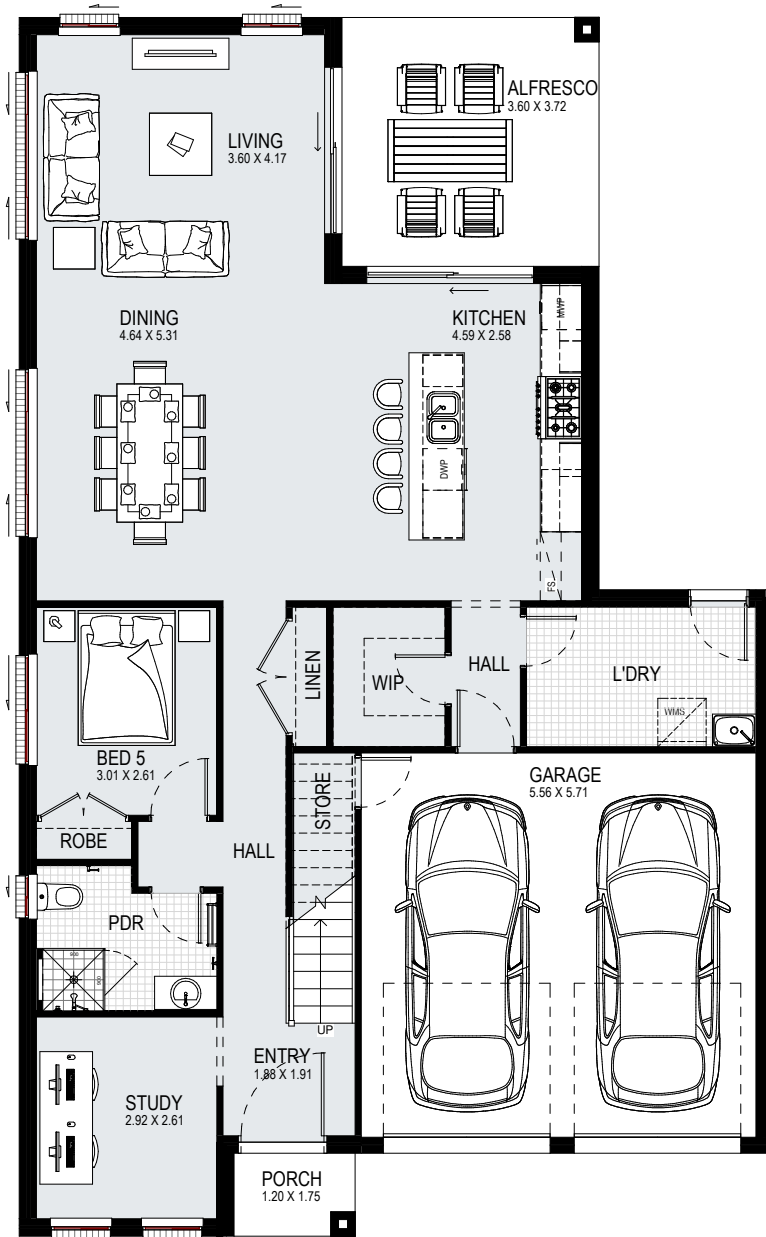
ground:	115.15m ²	garage:	34.35m ²	alfresco:	12.73m ²	width:	11.03m
first:	90.97m ²	porch:	2.42m ²	total:	261.04m ²	depth:	18.47m

10m

12.5m

13m

15m



suits
12.5m+
lot width

MADISON 29



ground:	113.40m ²	garage:	34.86m ²	alfresco:	13.86m ²	width:	10.91m
first:	101.24m ²	porch:	2.10m ²	total:	269.44m ²	depth:	17.63m

DISCLAIMER: Floorplans, facades and photography are for illustrative purposes and should be used as a guide only. Plans may include upgrade items above the standard specification. Details are correct at the time of printing and are subject to change without notice. Issued 21.12.2023. Lic No. 205 457C.

10m

12.5m

13m

15m



suits
12.5m+
lot width

NORTH HAVEN 29



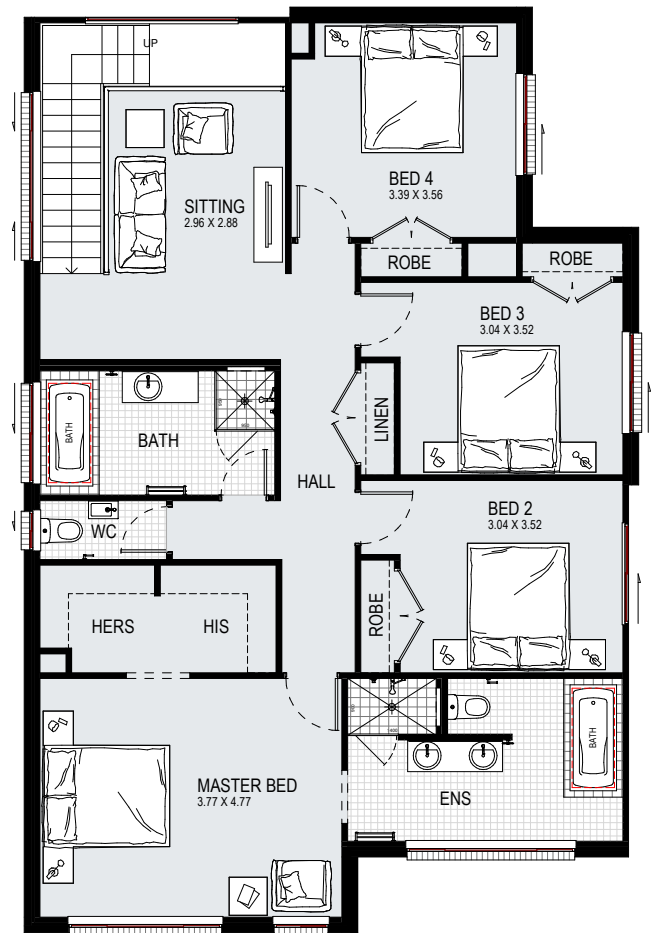
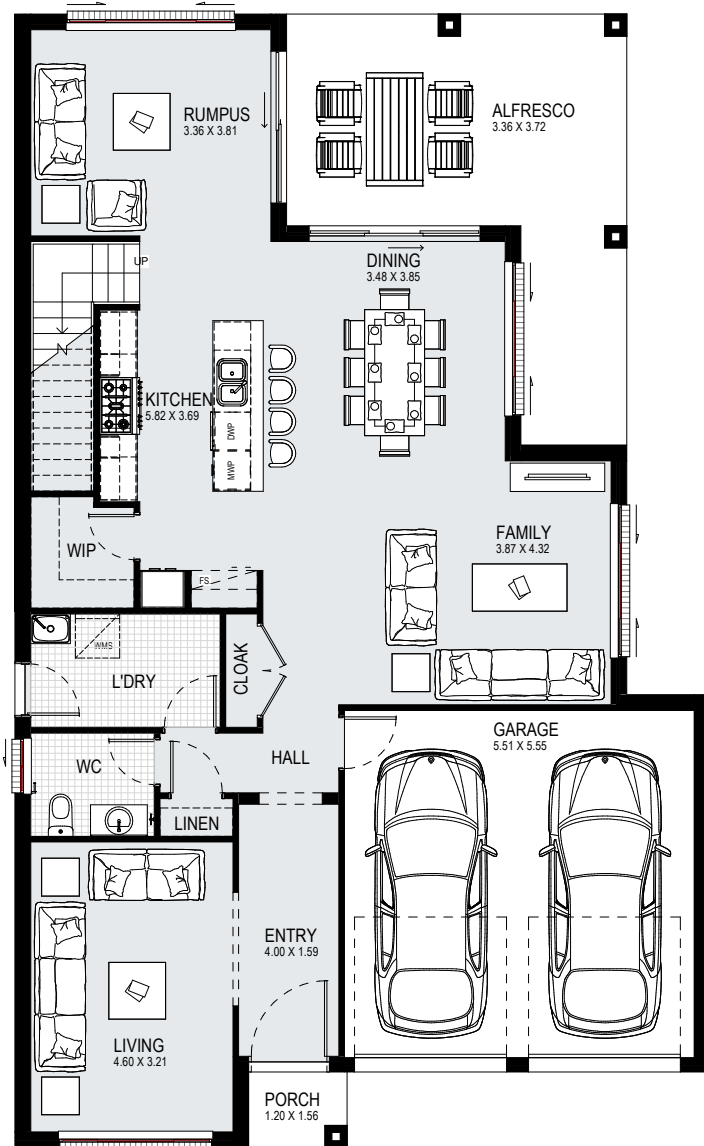
ground:	119.44m ²	garage:	36.23m ²	alfresco:	15.35m ²	width:	10.91m
first:	95.23m ²	porch:	1.90m ²	total:	272.06m ²	depth:	19.79m

10m

12.5m

13m

15m



suits
12.5m+
lot width

RIVIERA 33



ground:	117.61m ²	garage:	33.79m ²	alfresco:	23.99m ²	width:	11.03m
first:	122.94m ²	porch:	1.87m ²	total:	307.05m ²	depth:	17.99m

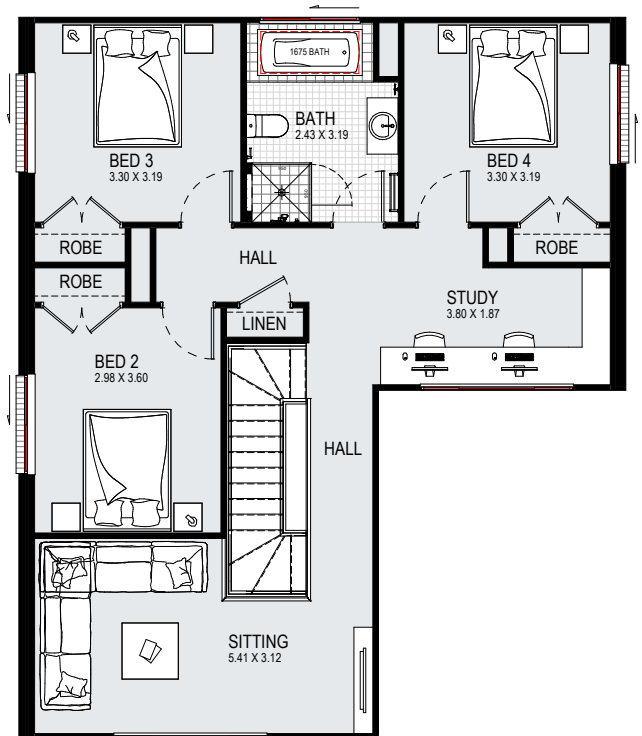
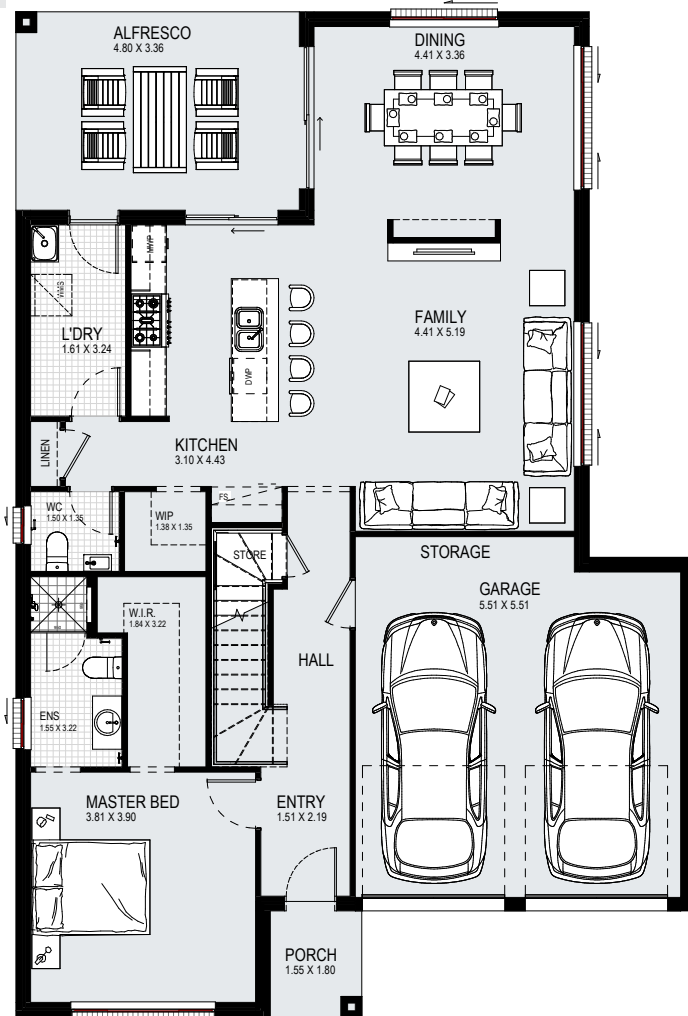
DISCLAIMER: Floorplans, facades and photography are for illustrative purposes and should be used as a guide only. Plans may include upgrade items above the standard specification. Details are correct at the time of printing and are subject to change without notice. Issued 21.12.2023. Lic No. 205 457C.

10m

12.5m

13m

15m



suits
12.5m+
lot width

SANCTUARY 28



ground:	114.41m ²	garage:	35.89m ²	alfresco:	16.13m ²	width:	11.51m
first:	84.88m ²	porch:	2.79m ²	total:	259.27m ²	depth:	17.03m

10m

12.5m

13m

15m



suits
12.5m+
lot width

TRIBECA 30



ground:	125.37m ²	garage:	36.17m ²	alfresco:	11.66m ²	width:	11.03m
first:	98.76m ²	porch:	1.87m ²	total:	278.36m ²	depth:	17.75m

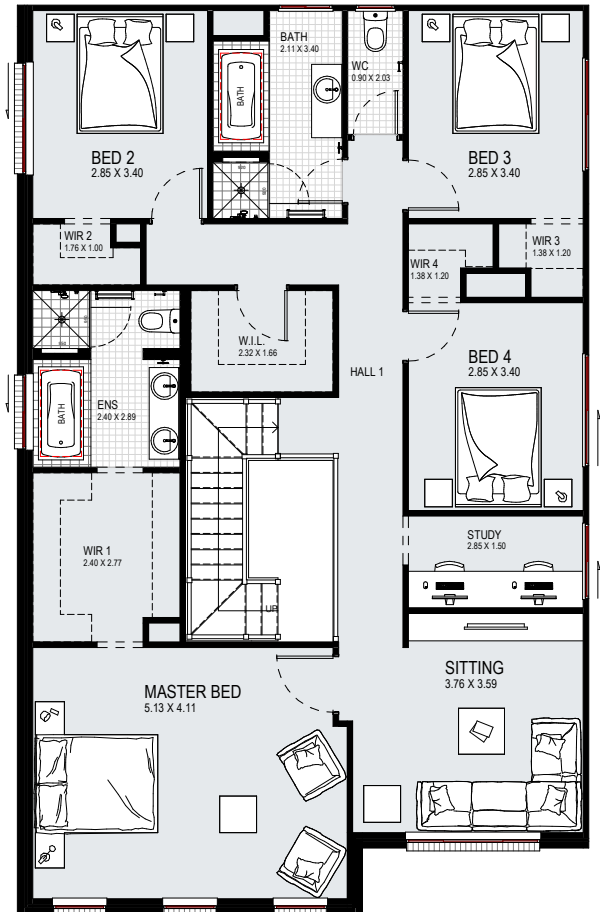
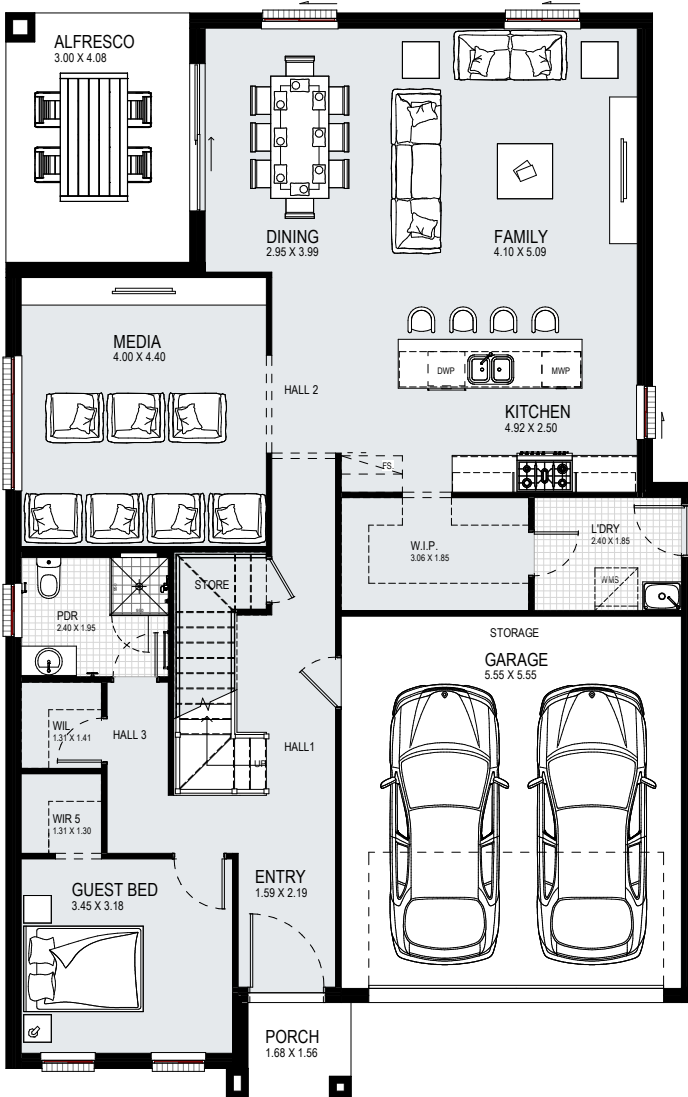
DISCLAIMER: Floorplans, facades and photography are for illustrative purposes and should be used as a guide only. Plans may include upgrade items above the standard specification. Details are correct at the time of printing and are subject to change without notice. Issued 21.12.2023. Lic No. 205 457C.

10m

12.5m

13m

15m



suits
13m+
lot width

EVOQUE 34



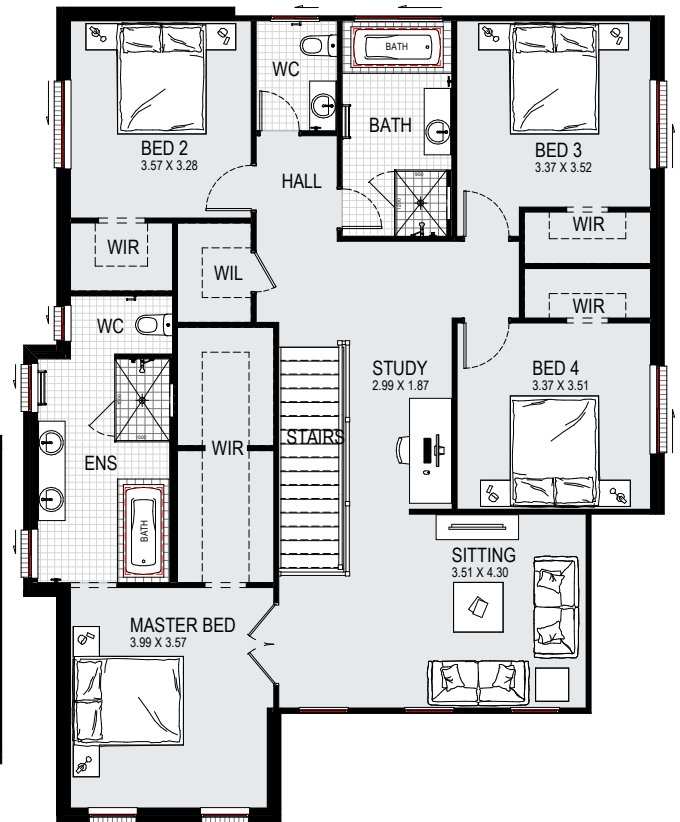
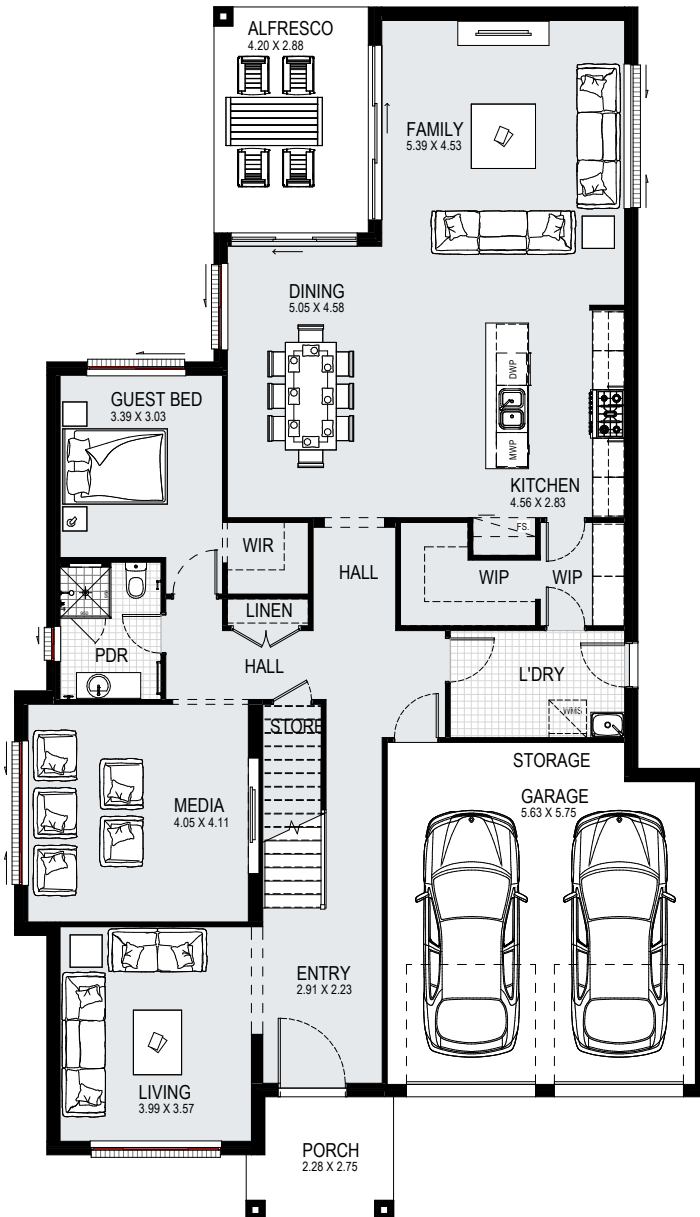
ground:	132.30m ²	garage:	36.66m ²	alfresco:	12.24m ²	width:	11.27m
first:	125.89m ²	porch:	2.79m ²	total:	318.59m ²	depth:	17.27m

10m

12.5m

13m

15m



suits
15m+
lot width

AFFINITY 40



ground:	167.17m ²	garage:	38.91m ²	alfresco:	12.10m ²	width:	12.95m
first:	140.88m ²	porch:	5.89m ²	total:	369.74m ²	depth:	22.55m

DISCLAIMER: Floorplans, facades and photography are for illustrative purposes and should be used as a guide only. Plans may include upgrade items above the standard specification. Details are correct at the time of printing and are subject to change without notice. Issued 21.12.2023. Lic No. 205 457C.

10m

12.5m

13m

15m



suits
15m+
lot width

AFFINITY 41



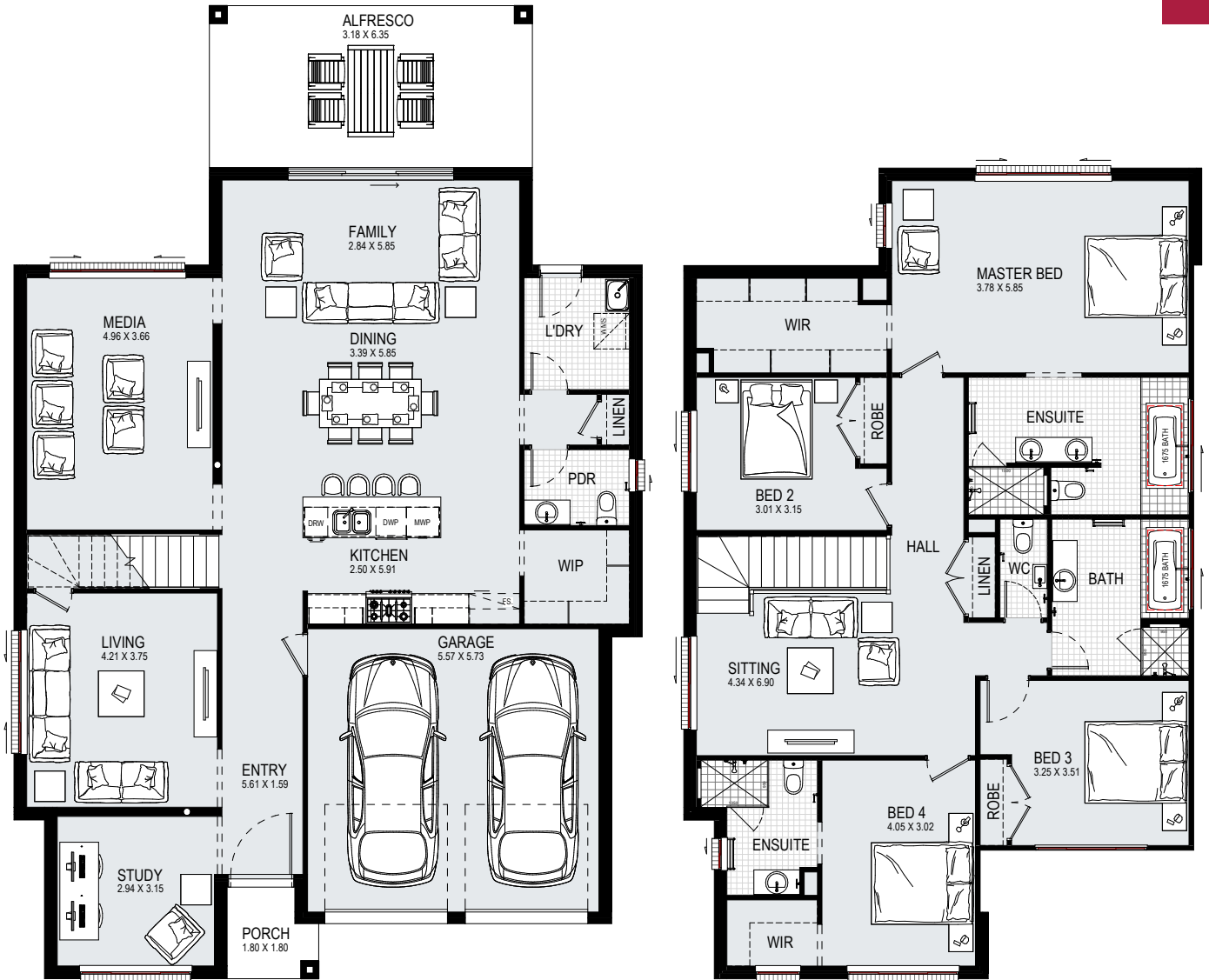
ground:	166.48m ²	garage:	38.91m ²	alfresco:	21.79m ²	width:	12.95m
first:	141.87m ²	porch:	5.62m ²	total:	379.58m ²	depth:	22.55m

10m

12.5m

13m

15m



suits
15m+
lot width

ALLURE 36



ground:	135.57m ²	garage:	34.86m ²	alfresco:	20.19m ²	width:	12.35m
first:	136.15m ²	porch:	2.90m ²	total:	334.15m ²	depth:	19.13m

DISCLAIMER: Floorplans, facades and photography are for illustrative purposes and should be used as a guide only. Plans may include upgrade items above the standard specification. Details are correct at the time of printing and are subject to change without notice. Issued 21.12.2023. Lic No. 205 457C.

10m

12.5m

13m

15m



suits
15m+
lot width

ARIA 38



ground:	136.60m ²	garage:	34.98m ²	alfresco:	17.04m ²	width:	11.15m
first:	154.39m ²	porch:	4.61m ²	total:	353.01m ²	depth:	21.61m

10m

12.5m

13m

15m



suits
15m+
lot width

AUSTIN 48



ground:	185.89m ²	garage:	37.25m ²	alfresco:	19.23m ²	width:	13.91m
first:	180.81m ²	porch:	9.95m ²	total:	448.15m ²	depth:	22.31m

DISCLAIMER: Floorplans, facades and photography are for illustrative purposes and should be used as a guide only. Plans may include upgrade items above the standard specification. Details are correct at the time of printing and are subject to change without notice. Issued 21.12.2023. Lic No. 205 457C.

10m

12.5m

13m

15m



suits
15m+
lot width

DYNASTY 42



ground:	172.75m ²	garage:	36.21m ²	alfresco:	17.97m ²	width:	12.47m
first:	143.61m ²	porch:	5.43m ²	total:	392.17m ²	depth:	20.39m

**ON DISPLAY AT
HOMEWORLD LEPPINGTON**



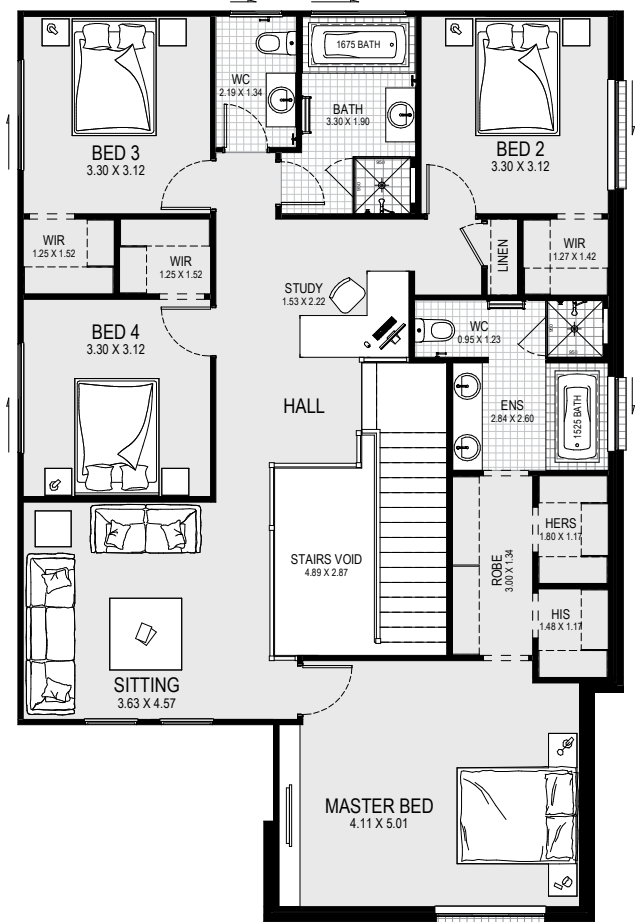
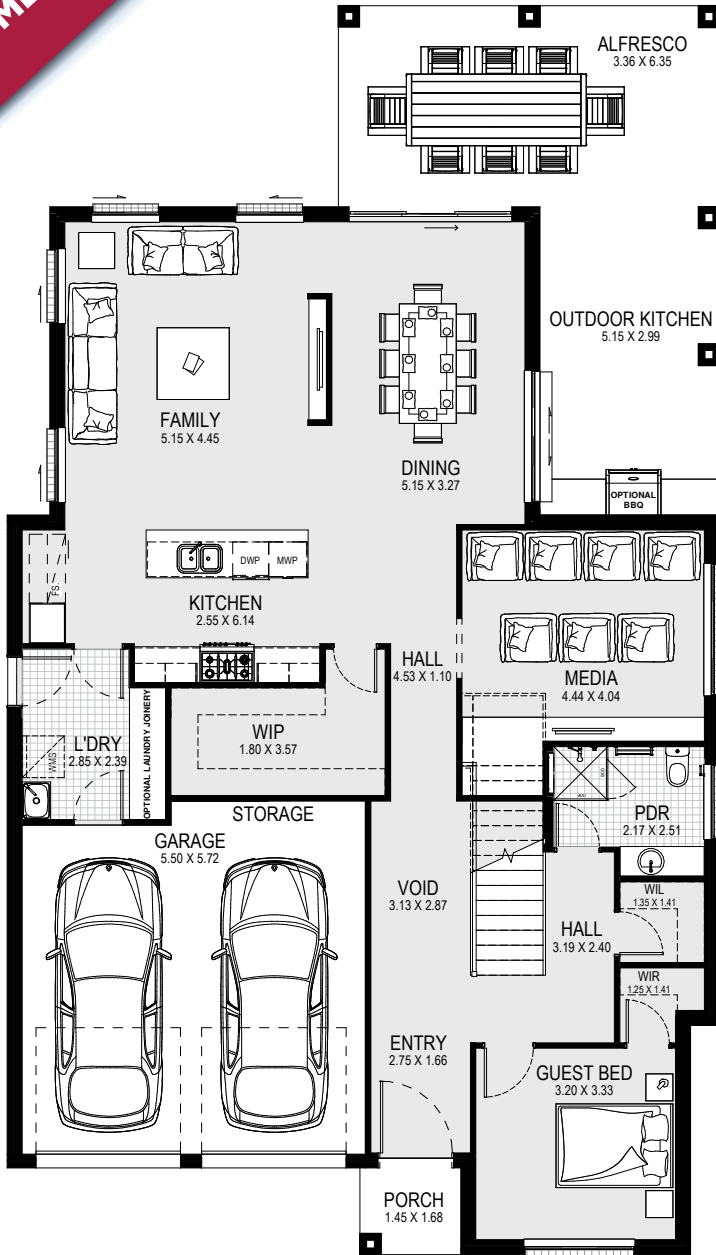
See more of the
Evoque on display or
take a virtual tour

10m

12.5m

13m

15m



suits 15m+ lot width	EVOQUE 38				5	3	2	
	ground:	140.48m ²	garage:	35.50m ²	alfresco:	36.73m ²	width:	11.87m
	first:	126.49m ²	porch:	2.44m ²	total:	353.13m ²	depth:	20.87m

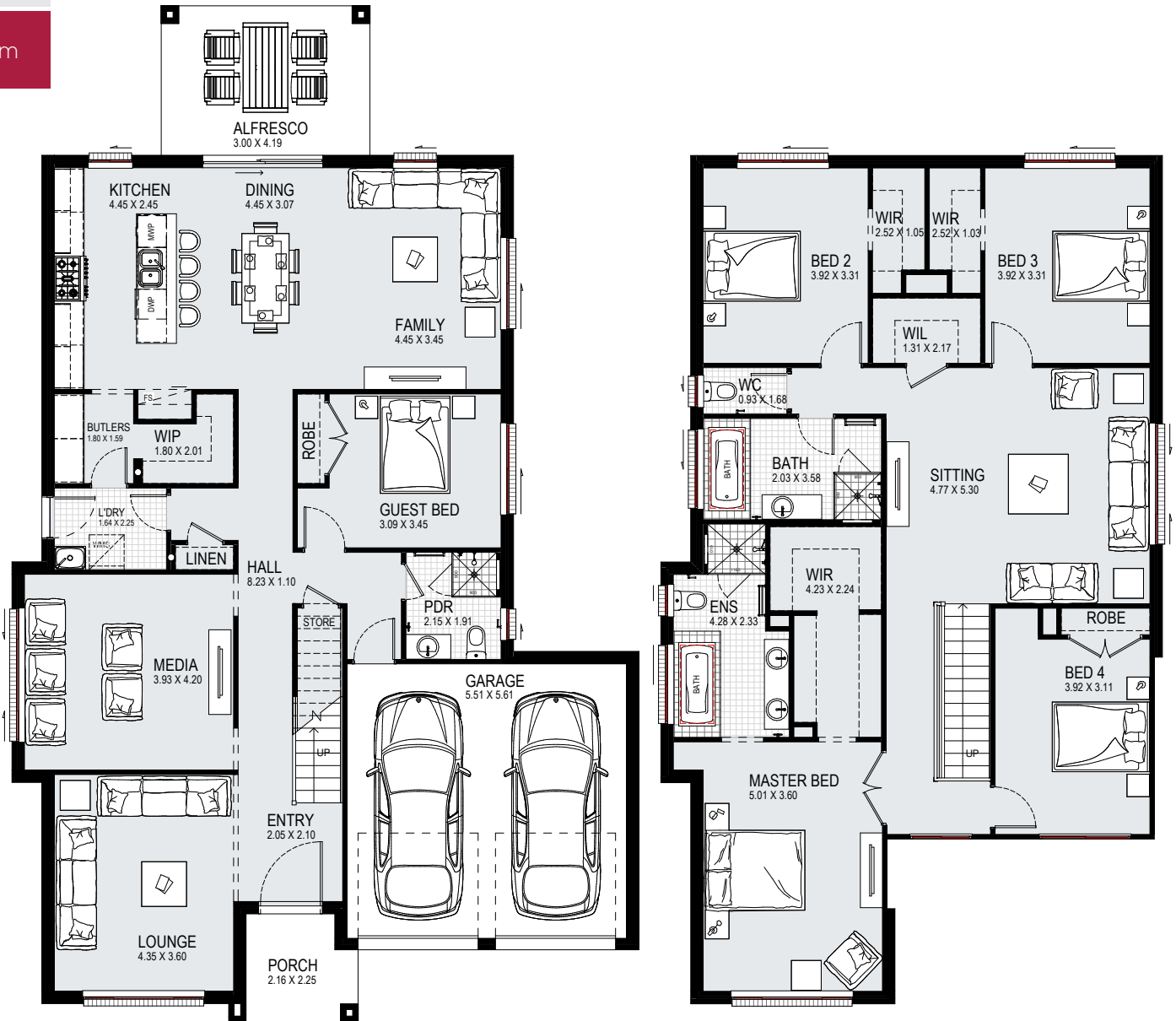
DISCLAIMER: Floorplans, facades and photography are for illustrative purposes and should be used as a guide only. Plans may include upgrade items above the standard specification. Details are correct at the time of printing and are subject to change without notice. Issued 21.12.2023. Lic No. 205 457C.

10m

12.5m

13m

15m



suits
15m+
lot width

GLENLEIGH 36



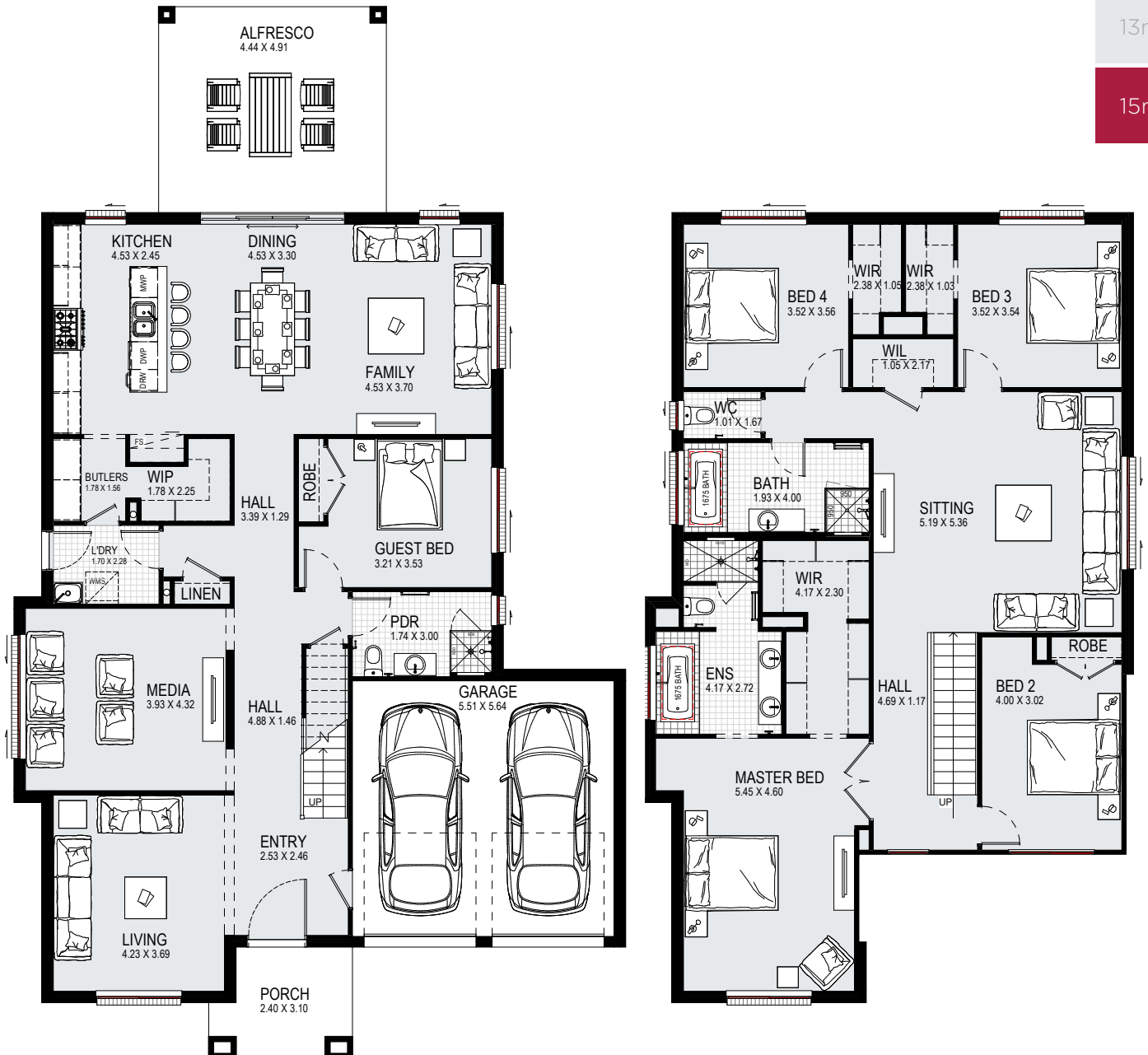
ground:	137.50m ²	garage:	34.45m ²	alfresco:	12.57m ²	width:	12.59m
first:	141.68m ²	porch:	4.65m ²	total:	334.51m ²	depth:	20.39m

10m

12.5m

13m

15m



suits
15m+
lot width

GLENLEIGH 39



ground:	146.54m ²	garage:	34.47m ²	alfresco:	21.80m ²	width:	13.19m
first:	148.90m ²	porch:	6.73m ²	total:	362.29m ²	depth:	22.67m

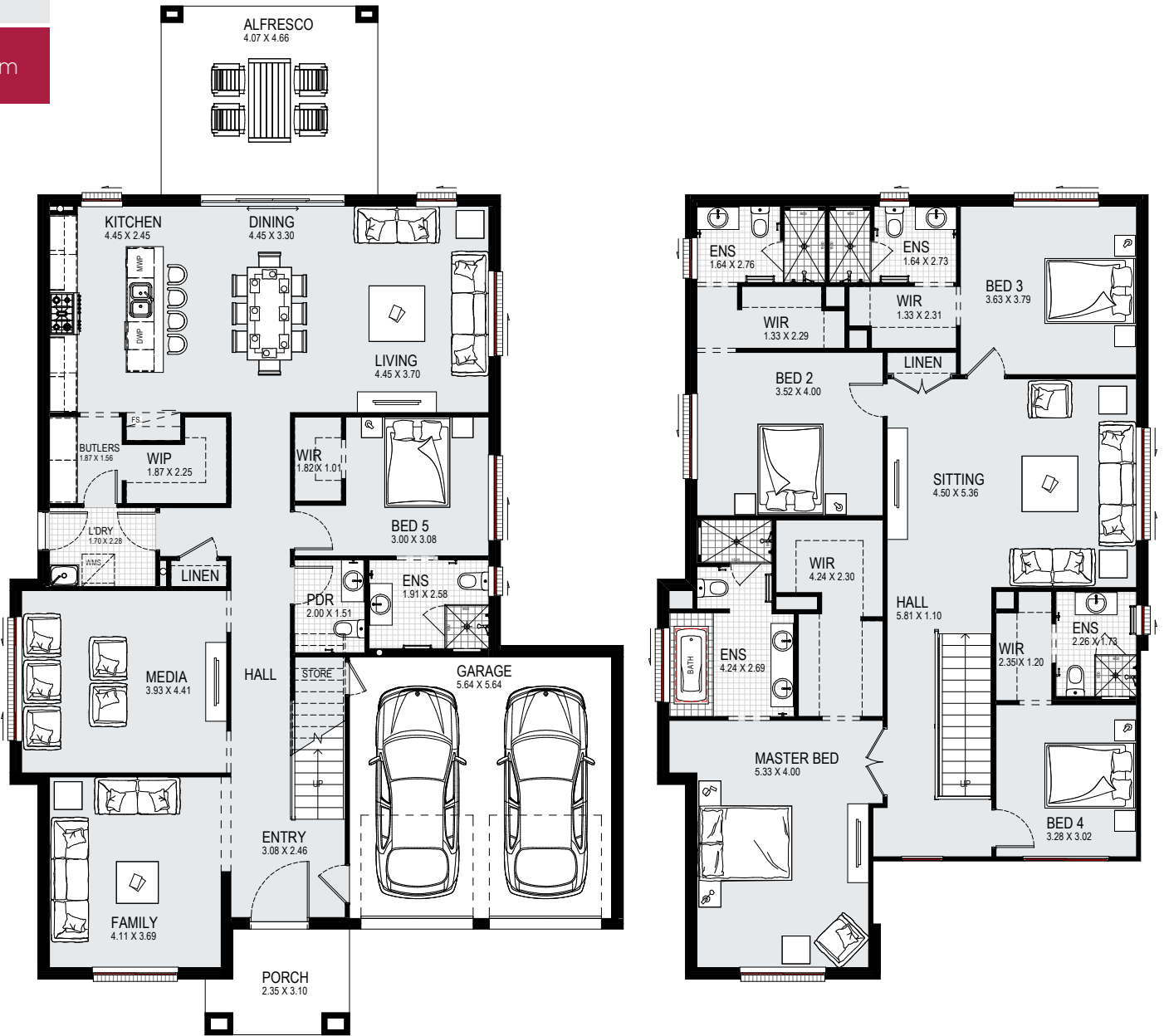
DISCLAIMER: Floorplans, facades and photography are for illustrative purposes and should be used as a guide only. Plans may include upgrade items above the standard specification. Details are correct at the time of printing and are subject to change without notice. Issued 21.12.2023. Lic No. 205 457C.

10m

12.5m

13m

15m



suits
15m+
lot width

GLENLEIGH 39 MK2

5 5.5 2

ground:	145.71m ²	garage:	35.23m ²	alfresco:	18.97m ²	width:	13.19m
first:	151.29m ²	porch:	6.43m ²	total:	361.73m ²	depth:	22.19m

**ON DISPLAY AT
HOMEWORLD BOX HILL**



View a virtual
tour of Glenleigh 41

10m

12.5m

13m

15m



suits
15m+
lot width

GLENLEIGH 41



ground:	157.66m ²	garage:	36.49m ²	alfresco:	22.39m ²	width:	13.31m
first:	150.68m ²	porch:	6.73m ²	total:	378.01m ²	depth:	23.03m

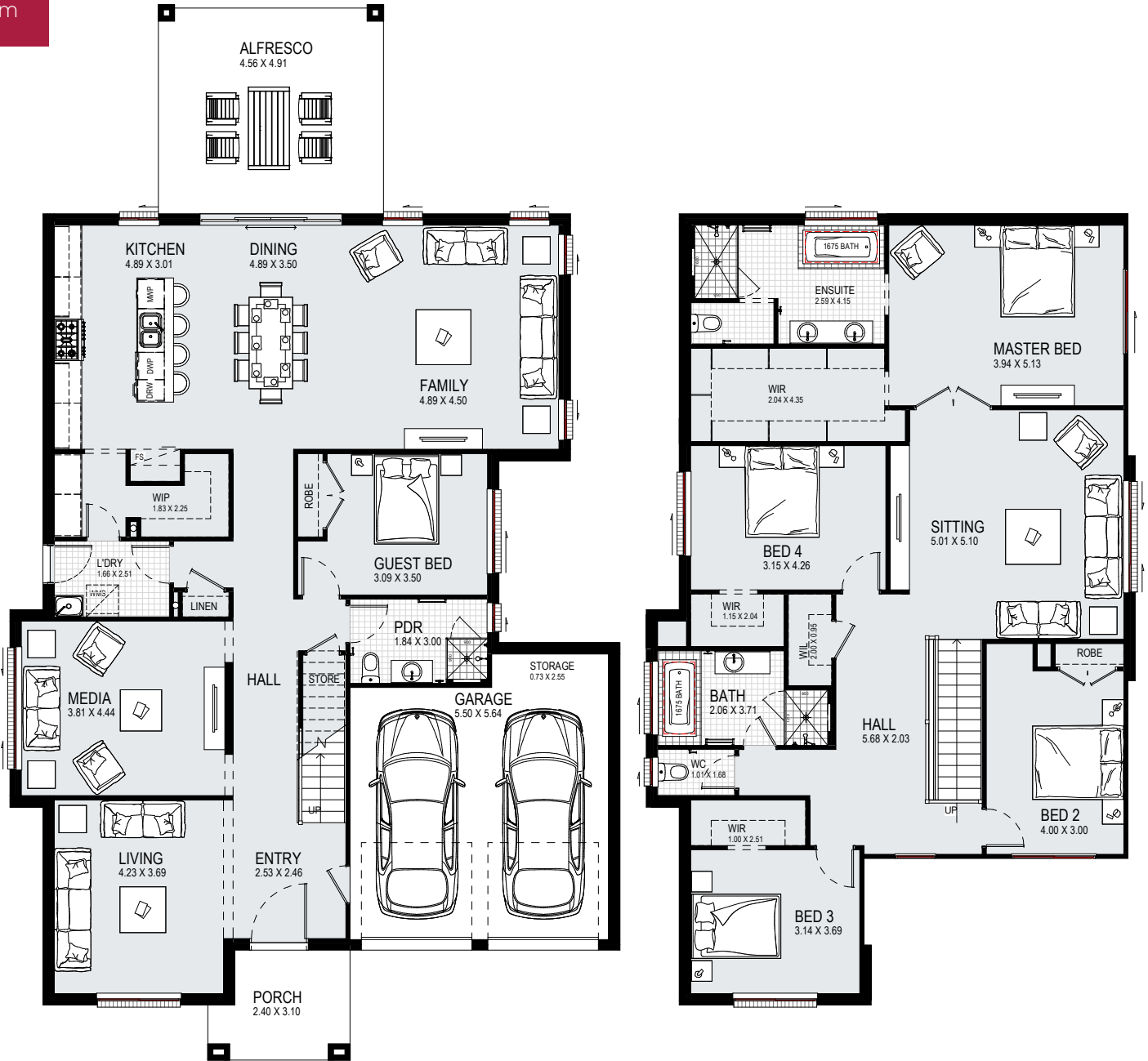
DISCLAIMER: Floorplans, facades and photography are for illustrative purposes and should be used as a guide only. Plans may include upgrade items above the standard specification. Details are correct at the time of printing and are subject to change without notice. Issued 21.12.2023. Lic No. 205 457C.

10m

12.5m

13m

15m



suits
15m+
lot width

GLENLEIGH 41 MK2



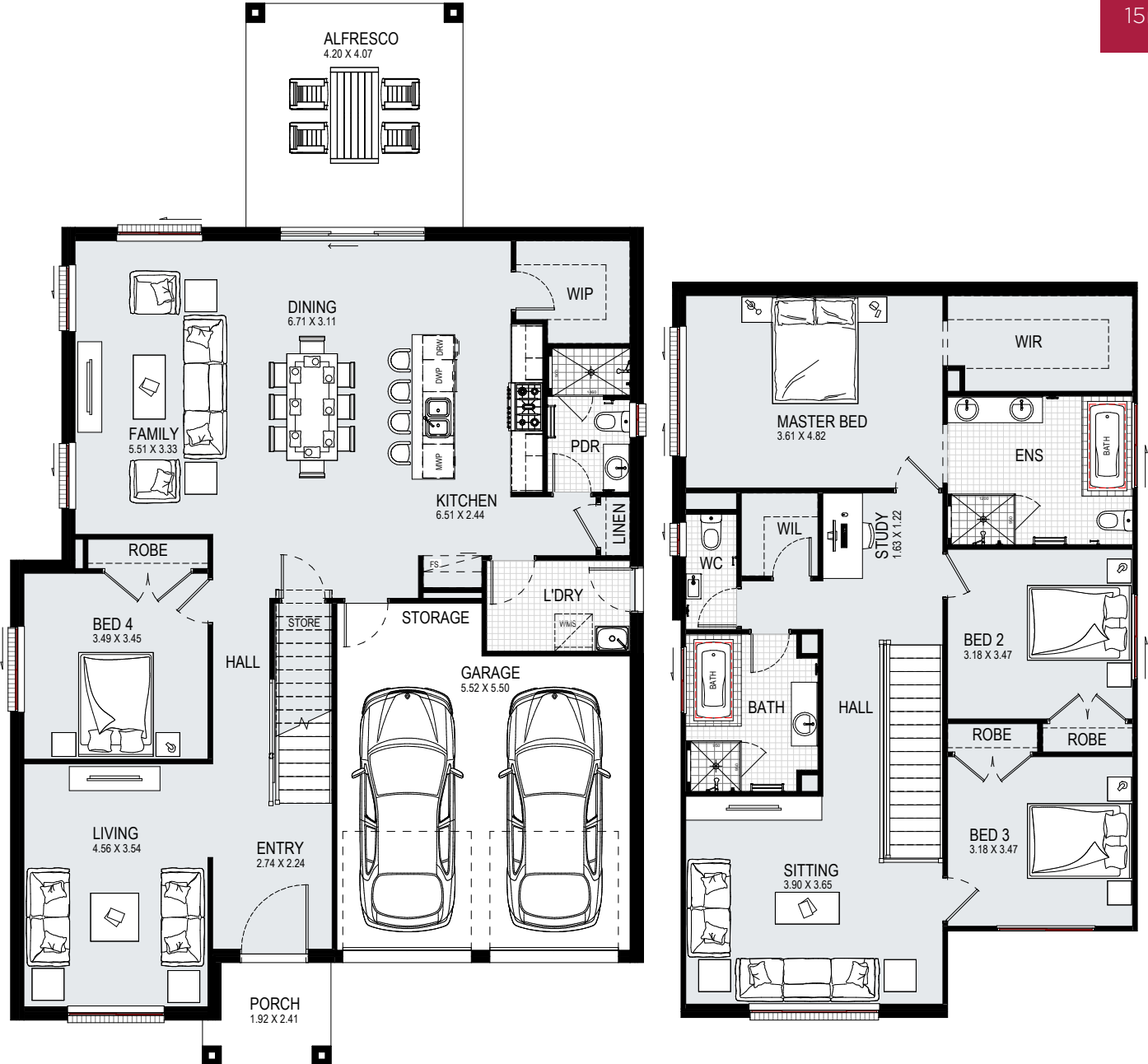
ground:	157.60m ²	garage:	36.49m ²	alfresco:	22.39m ²	width:	13.31m
first:	150.68m ²	porch:	6.73m ²	total:	377.96m ²	depth:	22.96m

10m

12.5m

13m

15m



suits
15m+
lot width

INFINITY 32



ground:	126.21m ²	garage:	35.76m ²	alfresco:	17.09m ²	width:	11.87m
first:	108.89m ²	porch:	4.25m ²	total:	296.59m ²	depth:	19.91m

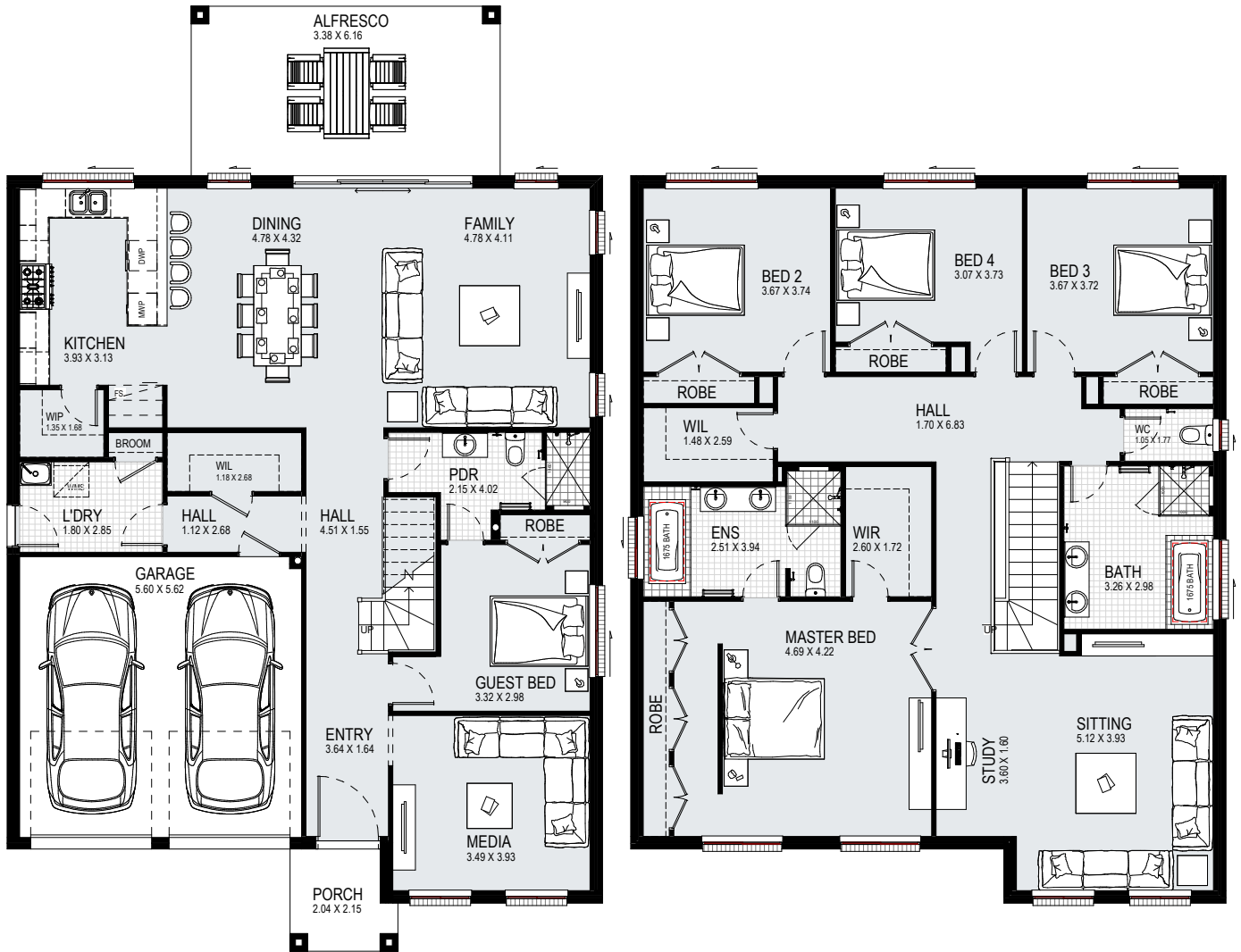
DISCLAIMER: Floorplans, facades and photography are for illustrative purposes and should be used as a guide only. Plans may include upgrade items above the standard specification. Details are correct at the time of printing and are subject to change without notice. Issued 21.12.2023. Lic No. 205 457C.

10m

12.5m

13m

15m



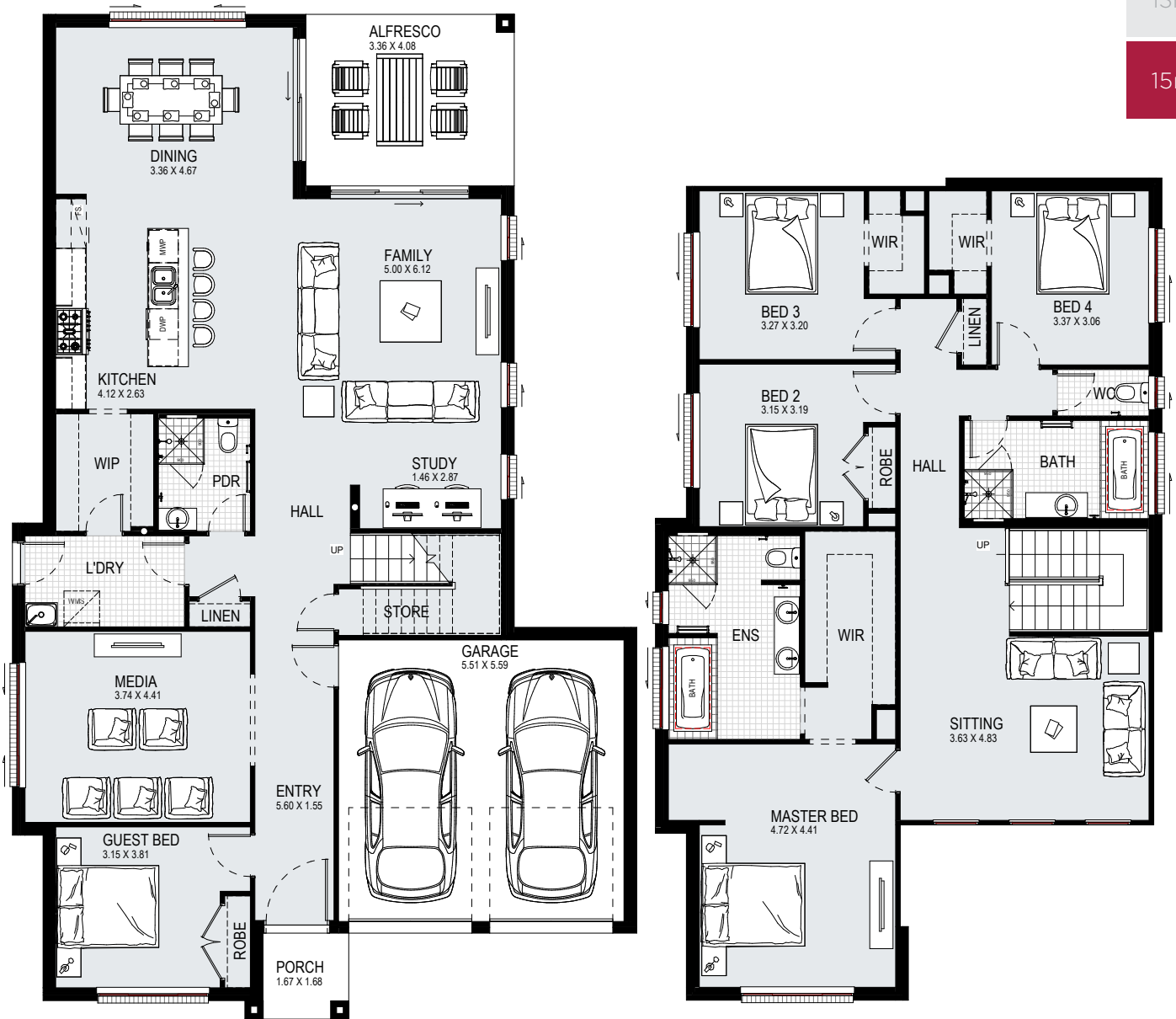
suits 15m+ lot width	JEWEL 38				5	3	2	
	ground:	129.98m ²	garage:	34.22m ²	alfresco:	20.82m ²	width:	11.87m
	first:	159.47m ²	porch:	4.01m ²	total:	353.23m ²	depth:	18.85m

10m

12.5m

13m

15m



suits
15m+
lot width

MAYFAIR 35



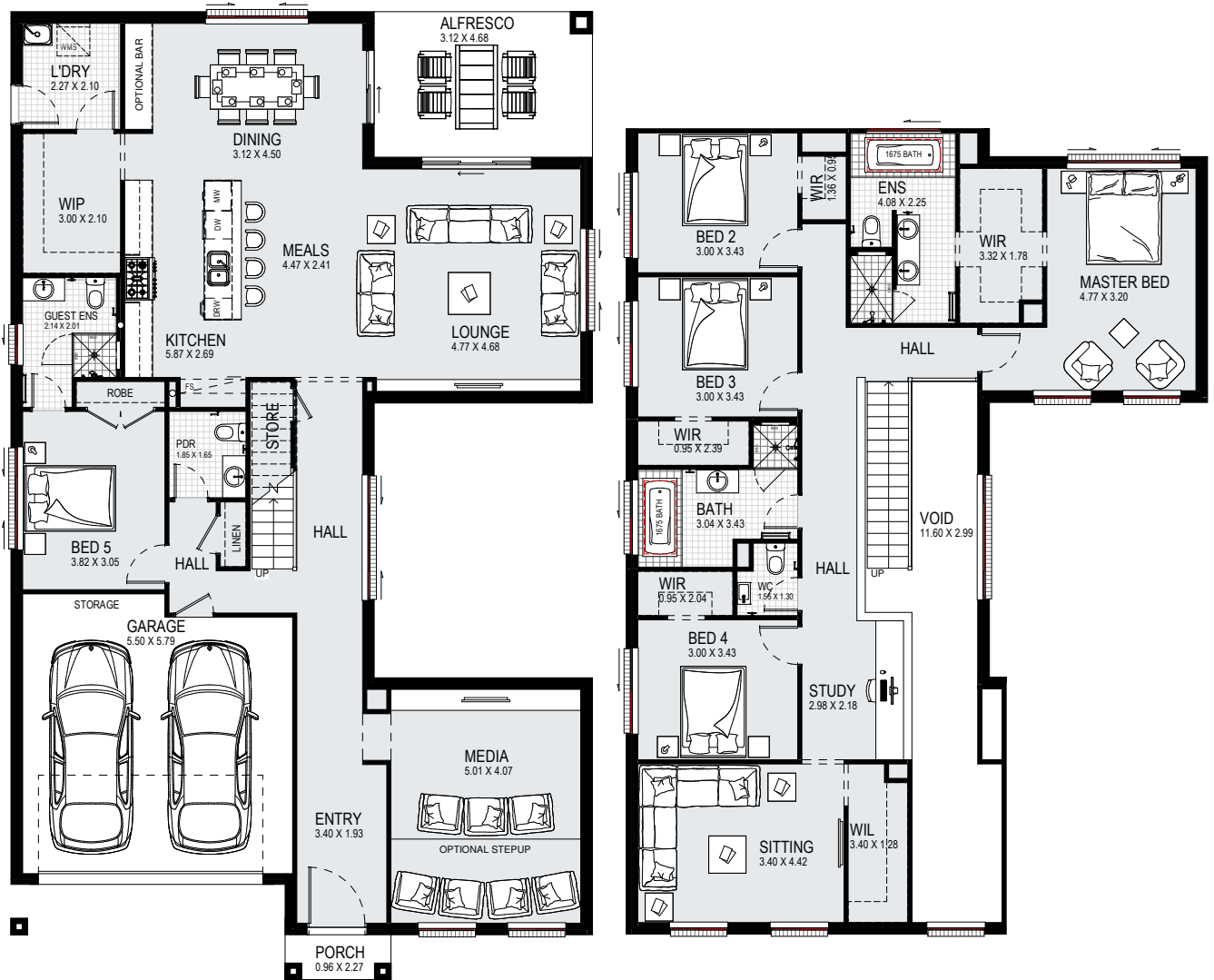
ground:	141.95m ²	garage:	34.12m ²	alfresco:	13.71m ²	width:	12.23m
first:	127.01m ²	porch:	2.95m ²	total:	325.16m ²	depth:	19.67m

DISCLAIMER: Floorplans, facades and photography are for illustrative purposes and should be used as a guide only. Plans may include upgrade items above the standard specification. Details are correct at the time of printing and are subject to change without notice. Issued 21.12.2023. Lic No. 205 457C.

**ON DISPLAY AT
HOMEWORLD LEPPINGTON**



See more of the
Melody on display or
take a virtual tour



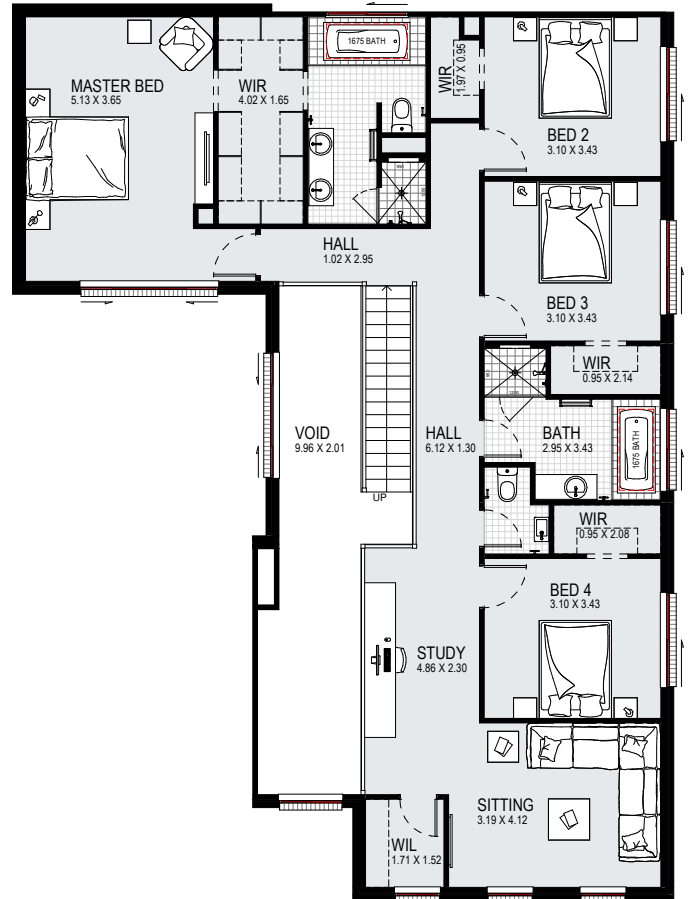
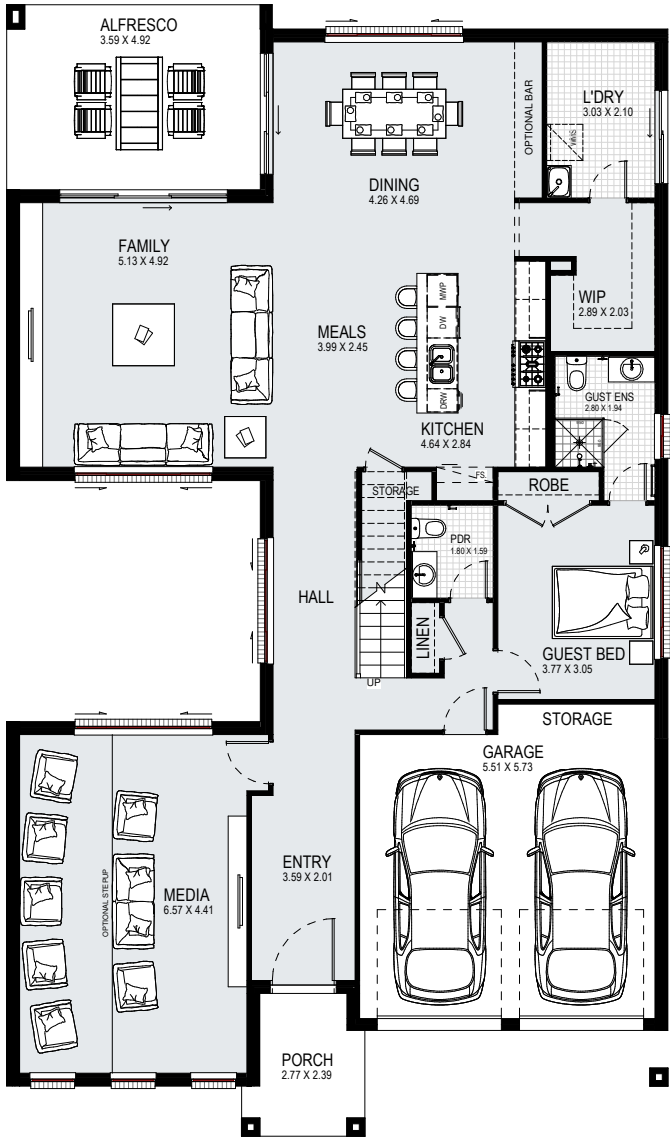
suits 15m+ lot width	MELODY 40				5	3.5	2	
	ground:	162.00m ²	garage:	36.26m ²	alfresco:	14.60m ²	width:	12.47m
	first:	137.28m ²	porch:	2.18m ²	total:	376.23m ²	depth:	20.75m

10m

12.5m

13m

15m



suits
15m+
lot width

MELODY 43 MK1



ground:	178.50m ²	garage:	36.45m ²	alfresco:	17.77m ²	width:	12.83m
first:	140.16m ²	porch:	5.74m ²	total:	400.83m ²	depth:	21.95m

DISCLAIMER: Floorplans, facades and photography are for illustrative purposes and should be used as a guide only. Plans may include upgrade items above the standard specification. Details are correct at the time of printing and are subject to change without notice. Issued 21.12.2023. Lic No. 205 457C.

10m

12.5m

13m

15m



suits
15m+
lot width

MELODY 43 MK2



ground:	174.07m ²	garage:	35.82m ²	alfresco:	17.11m ²	width:	13.19m
first:	148.86m ²	porch:	5.23m ²	total:	402.77m ²	depth:	21.70m

10m

12.5m

13m

15m



suits
15m+
lot width

MELODY 43 MK3

5 3.5 2

ground:	174.07m ²	garage:	35.82m ²	alfresco:	17.15m ²	width:	13.19m
first:	148.86m ²	porch:	5.25m ²	total:	402.83m ²	depth:	21.71m

DISCLAIMER: Floorplans, facades and photography are for illustrative purposes and should be used as a guide only. Plans may include upgrade items above the standard specification. Details are correct at the time of printing and are subject to change without notice. Issued 21.12.2023. Lic No. 205 457C.

10m

12.5m

13m

15m



suits
15m+
lot width

MELODY 43 MK4



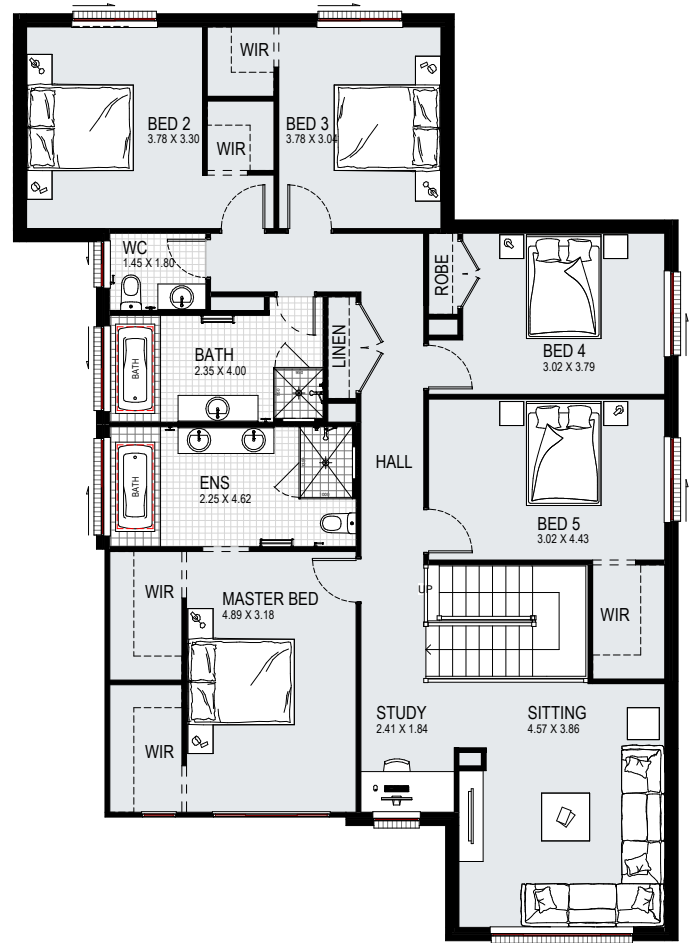
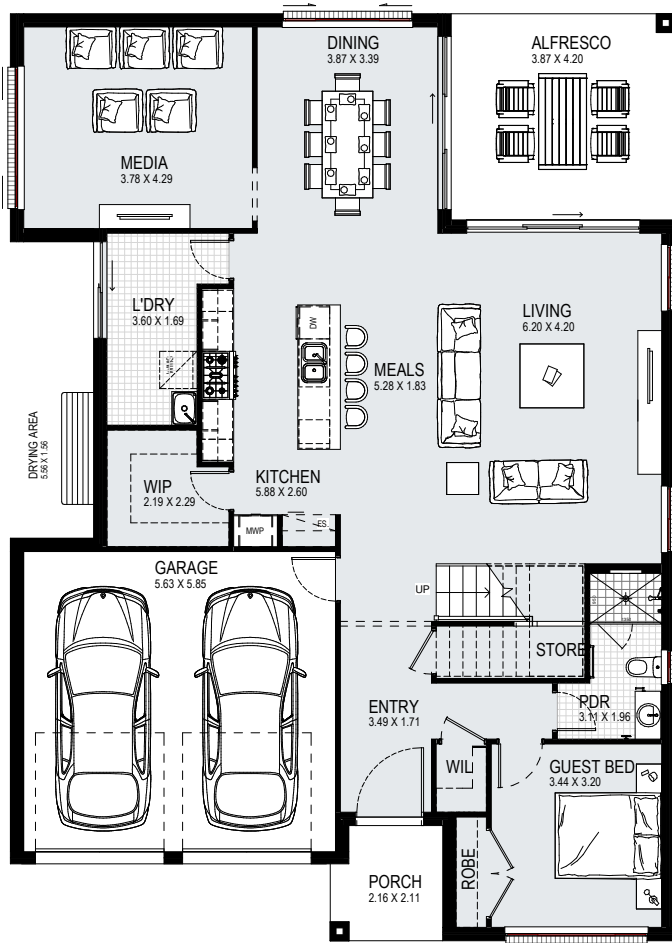
ground:	174.07m ²	garage:	35.82m ²	alfresco:	17.15m ²	width:	13.19m
first:	148.86m ²	porch:	5.23m ²	total:	402.81m ²	depth:	21.70m

10m

12.5m

13m

15m



suits
15m+
lot width

TRINITY 39



ground:	142.66m ²	garage:	36.32m ²	alfresco:	16.25m ²	width:	12.47m
first:	157.97m ²	porch:	4.31m ²	total:	364.05m ²	depth:	17.39m

DISCLAIMER: Floorplans, facades and photography are for illustrative purposes and should be used as a guide only. Plans may include upgrade items above the standard specification. Details are correct at the time of printing and are subject to change without notice. Issued 21.12.2023. Lic No. 205 457C.

DOUBLE STOREY FACADE COLLECTION

ARCHER, ASTORIA, CLAREMONT, CORAL, EDGECLIFF, EMPIRE, LANCASTER, MADISON, MELROSE, NEPEAN, NORTH HAVEN, OSLO, RIVIERA, ROCHESTER, SANCTUARY, SENATOR, TRIBECA, WESTCHESTER, WOODSIDE



BRIDGEHAMPTON



CLEARVIEW



LINCOLN



MONTGOMERY



ONTARIO

**Create your
own street
appeal to suit
your style.**



SYRACUSE



TALL OAK



TRADITIONAL



WESTPOINT

HUDSON



HUDSON-STANTON

DOUBLE STOREY FACADE COLLECTION

DYNASTY, EVOQUE, GLENLEIGH, MAYFAIR, TRINITY



VOGUE



BALMORAL



STELLA



MELODY



MATRIX



AXIS



TRADITIONAL



ORACLE

DYNASTY, EVOQUE, GLENLEIGH, MAYFAIR, TRINITY



COVE

JEWEL, ARIA



RETRO



CLASSIC



TRADITIONAL

**Building
together for
generations.**

DOUBLE STOREY FACADE COLLECTION

ALLURE



IMPERIAL



ASPEN



RIO

BRONTE



BAYVIEW



HORIZON



NEW HAMPSHIRE



OASIS



STELLA



TRADITIONAL

DOUBLE STOREY FACADE COLLECTION

AUSTIN



FRENCH PROVINCIAL



TRADITIONAL

IRIS



TREND



HAMPTON



RICHMOND



CLASSIC

MELODY



COSMOPOLITAN



MATRIX



TRADITIONAL



PRESIDENT



CLOVELLY

DOUBLE STOREY FACADE COLLECTION

INFINITY



PROVINCIAL



MODERN



MODENA

AFFINITY



AXIS



MELODY



MATRIX



STELLA



VOGUE



PROVIDENCE



TRADITIONAL



kurmondhomes

Building together
for generations

CALL US TODAY 1300 764 761 | WWW.KURMONDHOMES.COM.AU

**HEMOWORLD
MARSDEN PARK**

Ellison Street, Marsden Park

**HEMOWORLD
BOX HILL**

Gittel Street, Box Hill

**LEPPINGTON LIVING
LEPPINGTON**

Saturn St, Leppington

**HEMOWORLD
LEPPINGTON**

Berkshire Circuit, Leppington

Visit our display homes & speak to one of our home consultants

Designs may not be reproduced or copies, either wholly or in part, without permission. Issue 21.12.2023. Lic No. 205 457C