

ACREAGE LIVING DESIGNS

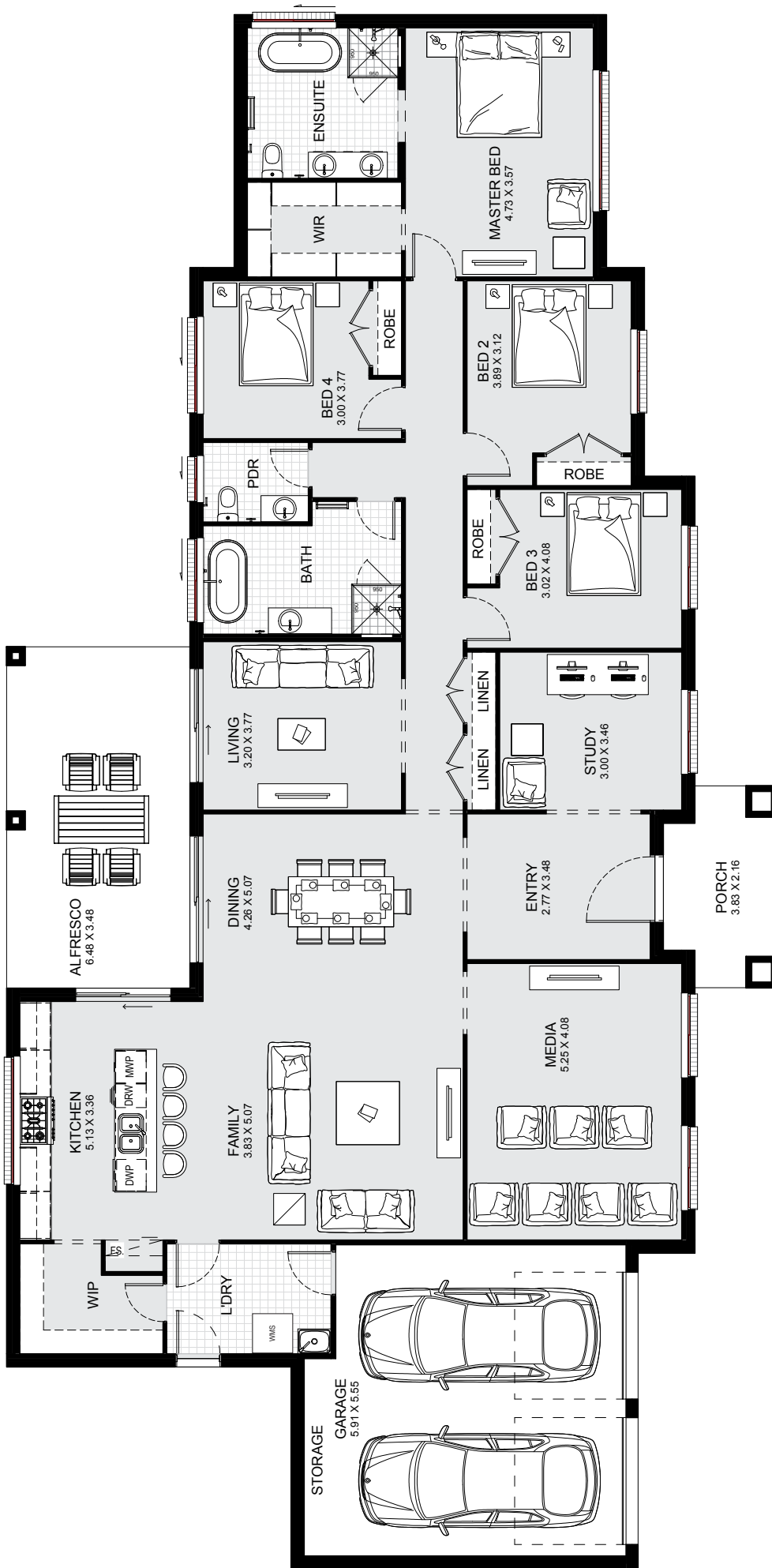


kurmondhomes



CONTENTS

Fairmont 33	4
Fairmont 43	5
Hopewood 46	6
Mirage 52	7
Mirage 62	8
Mirage 66	9
Riverview 39	10
Riverview 49	11
Watergum 28	12

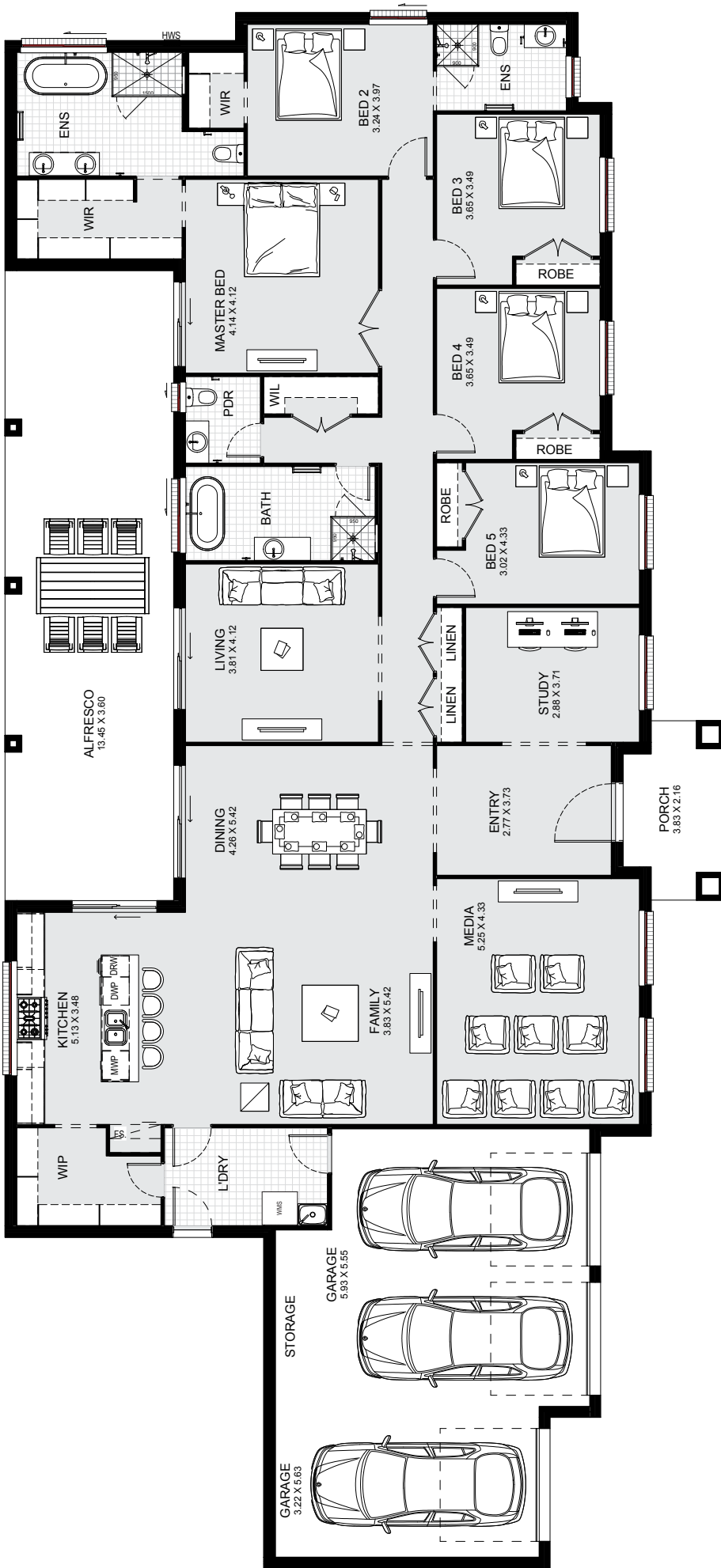


acreage living

FAIRMONT 33



ground:	238.07m ²	porch:	7.42m ²	total:	306.80m ²	width:	29.51m
garage:	38.76m ²	alfresco:	22.55m ²	squares:	33sq	depth:	14.63m



acreage living

FAIRMONT 43



ground:	282.70m ²	porch:	7.42m ²	total:	399.46m ²	width:	33.11m
garage:	60.92m ²	alfresco:	48.42m ²	squares:	43sq	depth:	15.35m

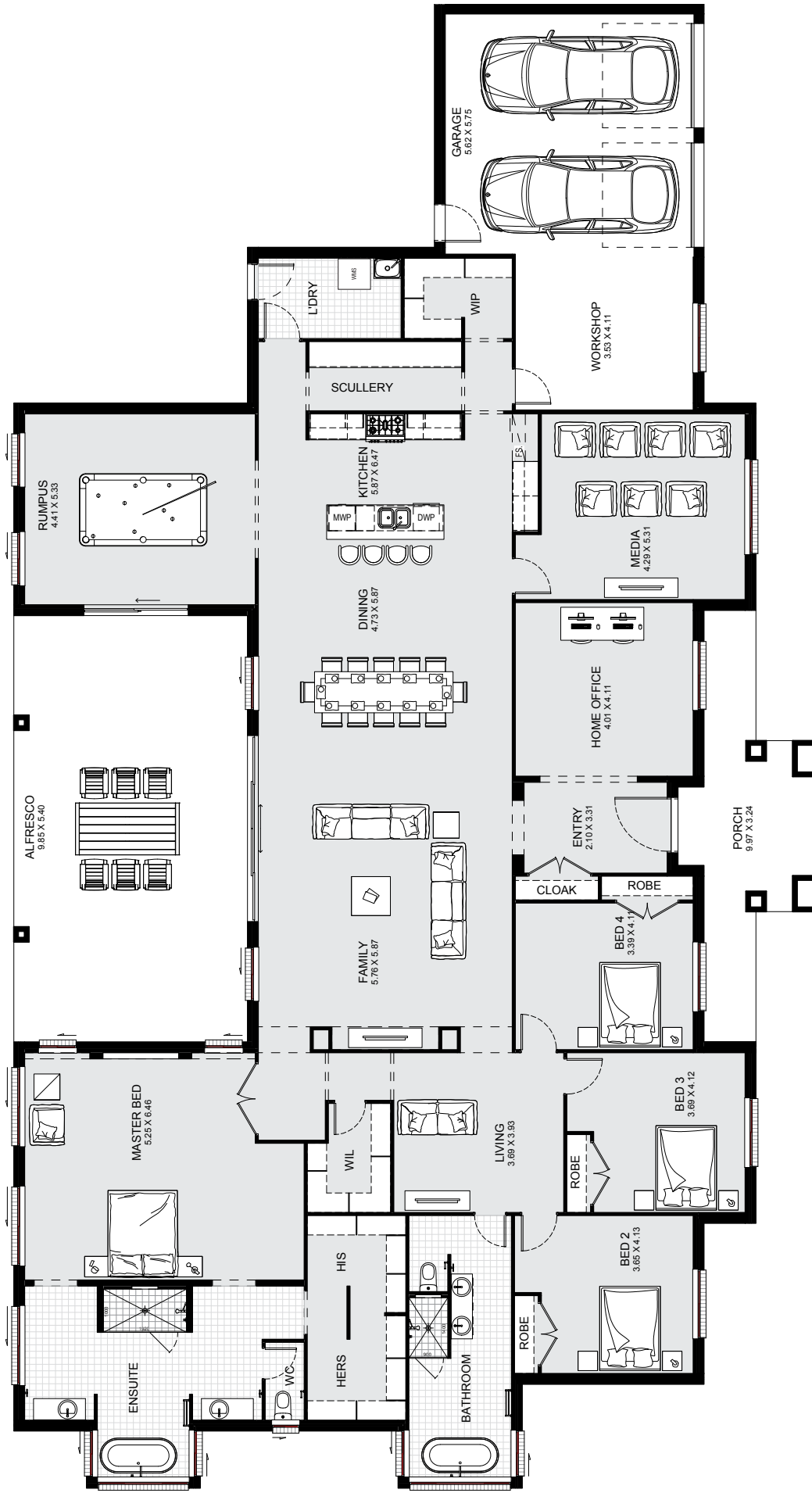


acreage living

HOPEWOOD 46




4 2.5 2

ground:	304.49m ²	porch:	49.98m ²	total:	426.36m ²	width:	31.67m
garage:	43.19m ²	alfresco:	28.71m ²	squares:	46sq	depth:	16.44m

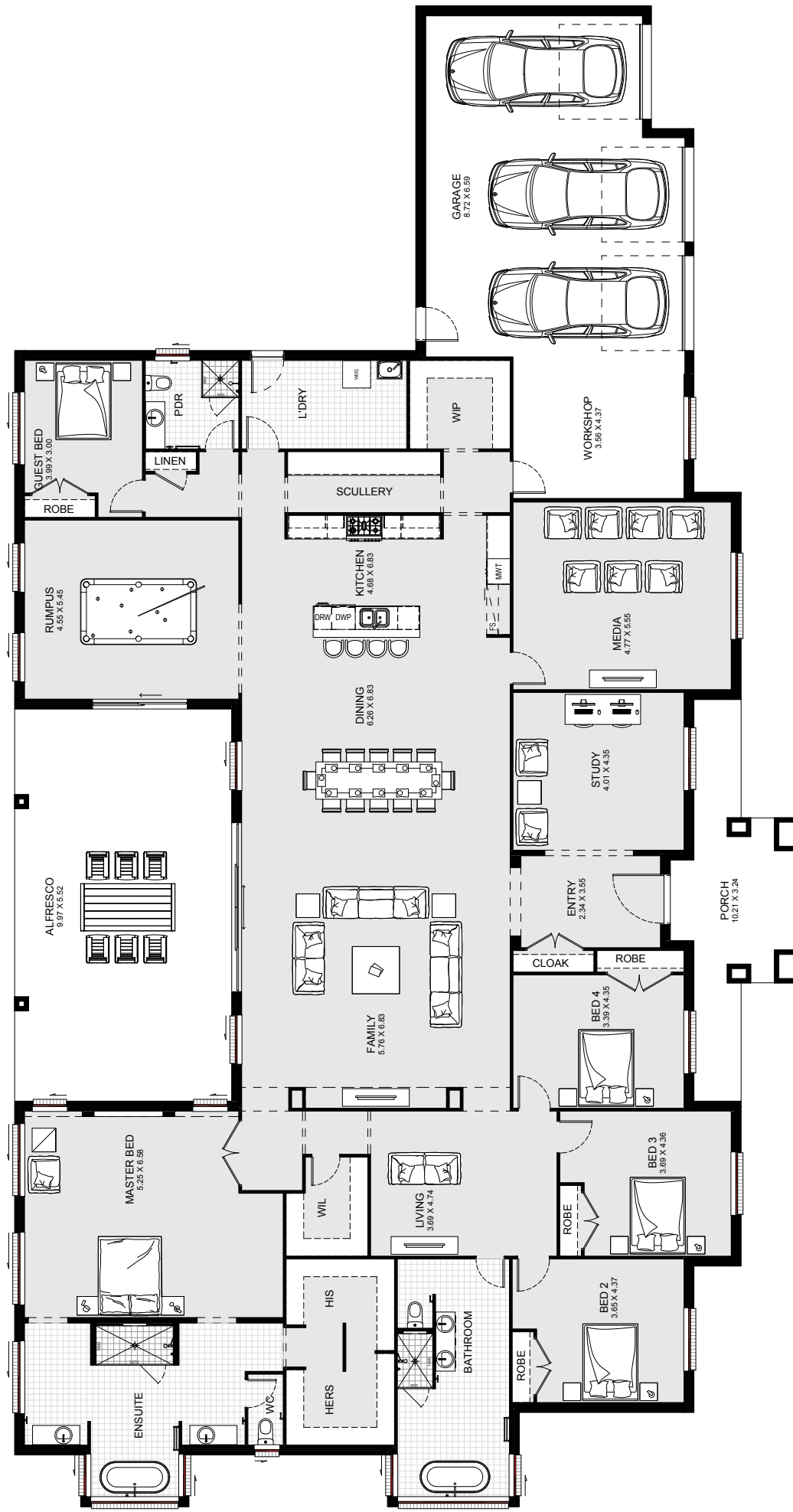


acreage living

MIRAGE 52

 4
 2
 2

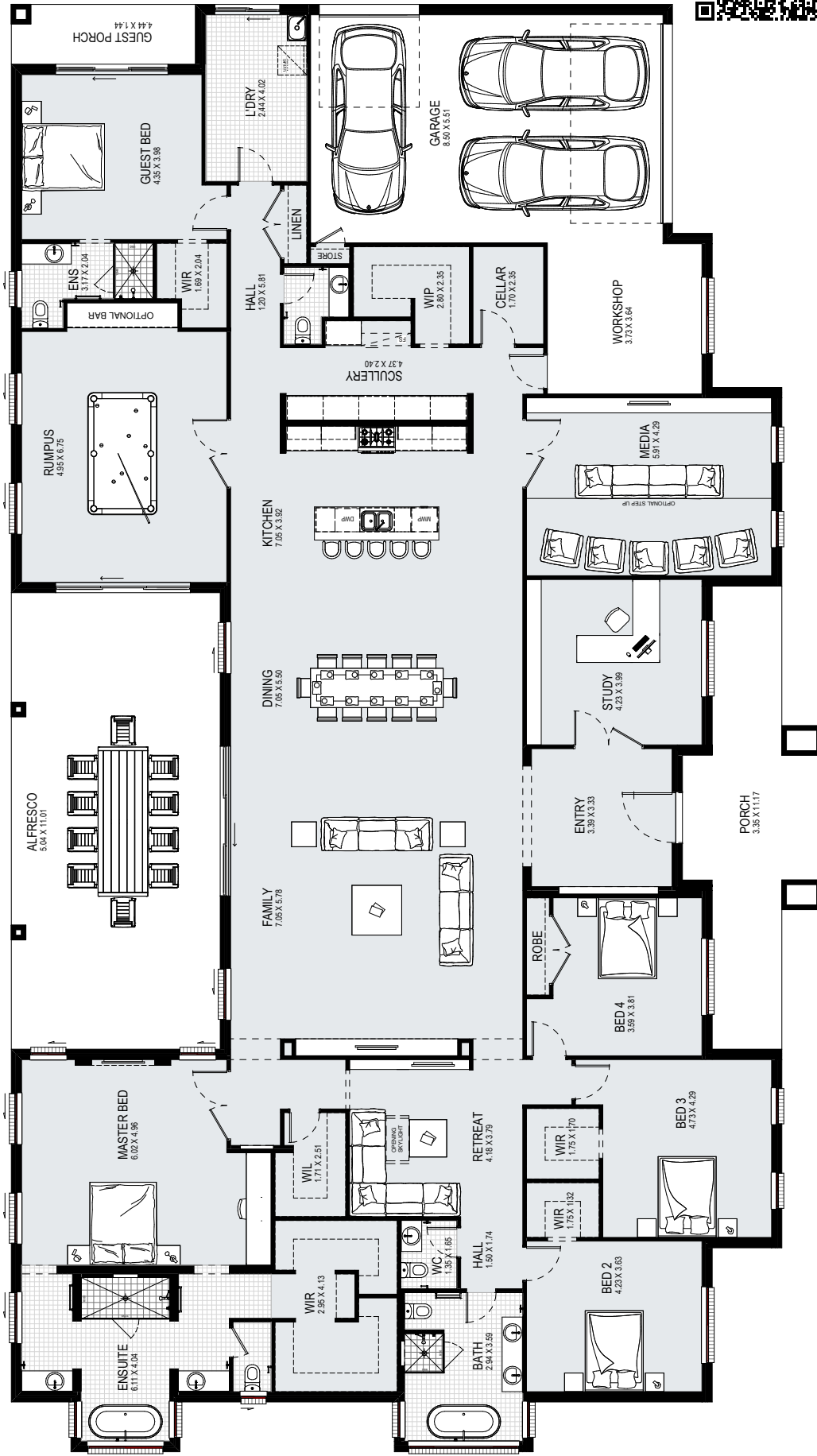
ground:	359.36m ²	porch:	18.74m ²	total:	483.08m ²	width:	34.31m
garage:	51.79m ²	alfresco:	53.19m ²	squares:	52sq	depth:	18.59m



acreage living

MIRAGE 62

ground:	425.46m ²	porch:	19.52m ²	total:	576.23m ²	width:	38.15m
garage:	76.21m ²	alfresco:	55.03m ²	squares:	62sq	depth:	19.91m
						 5  3  3	



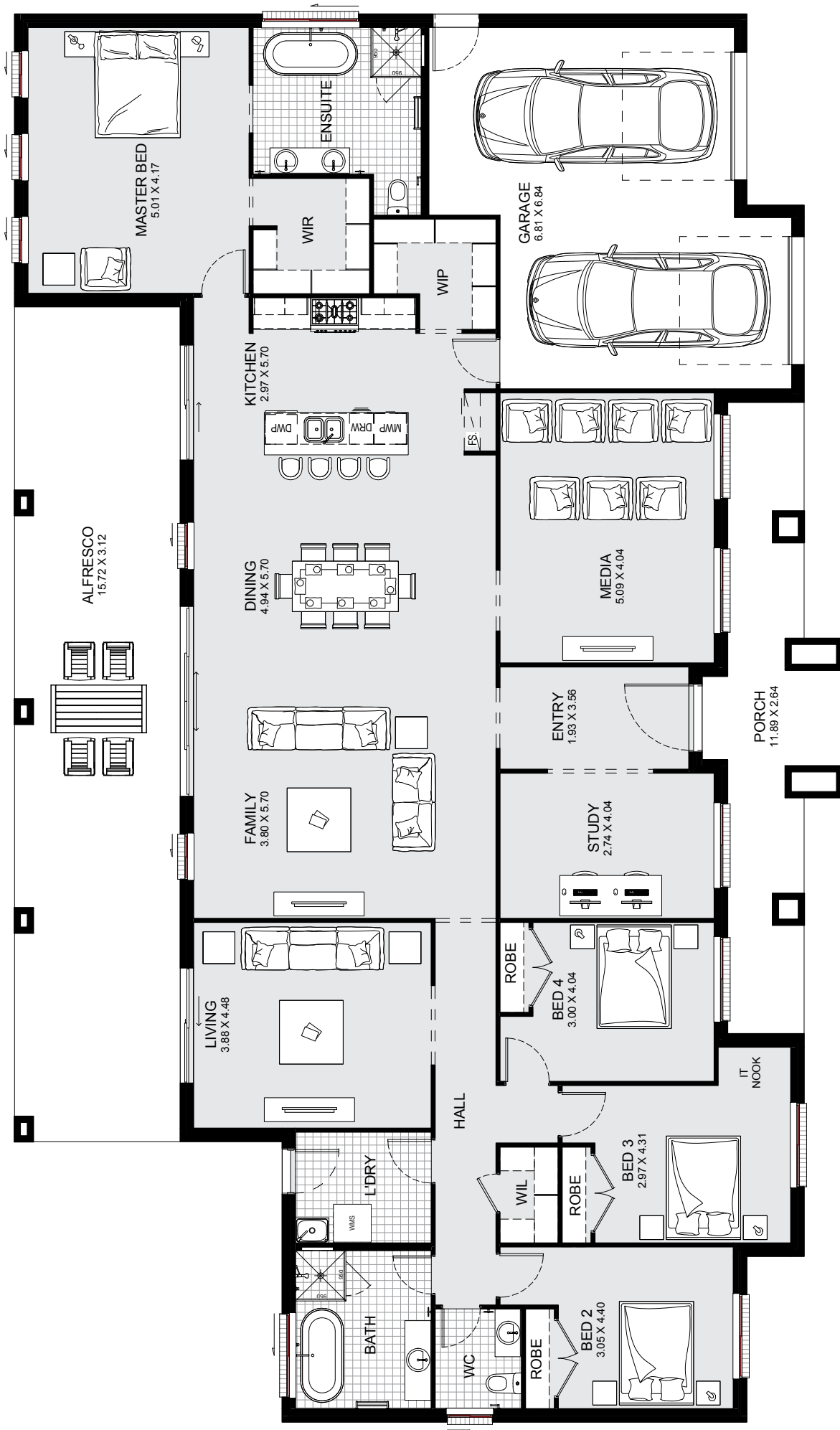
View a virtual tour of Mirage 66

MIRAGE 66

acreage living



ground:	459.01m ²	porch:	25.14m ²	total:	610.98m ²	width:	34.91m
garage:	64.95m ²	alfresco:	55.49m ²	squares:	66sq	depth:	19.54m

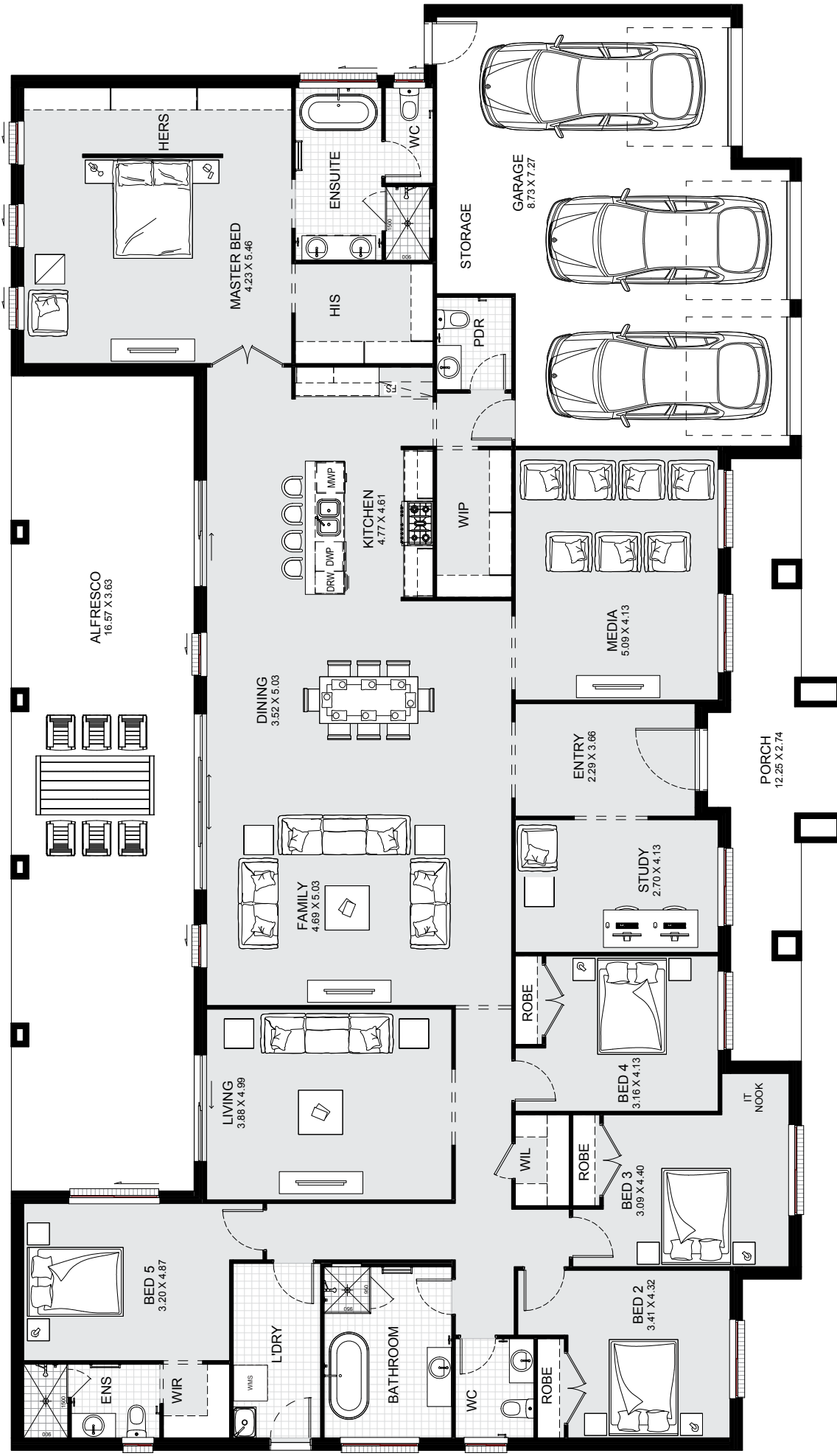


RIVERVIEW 39






ground:	251.34m ²	porch:	20.03m ²	total:	362.48m ²	width:	26.51m
garage:	42.07m ²	alfresco:	49.05m ²	squares:	39sq	depth:	15.59m

acreage living



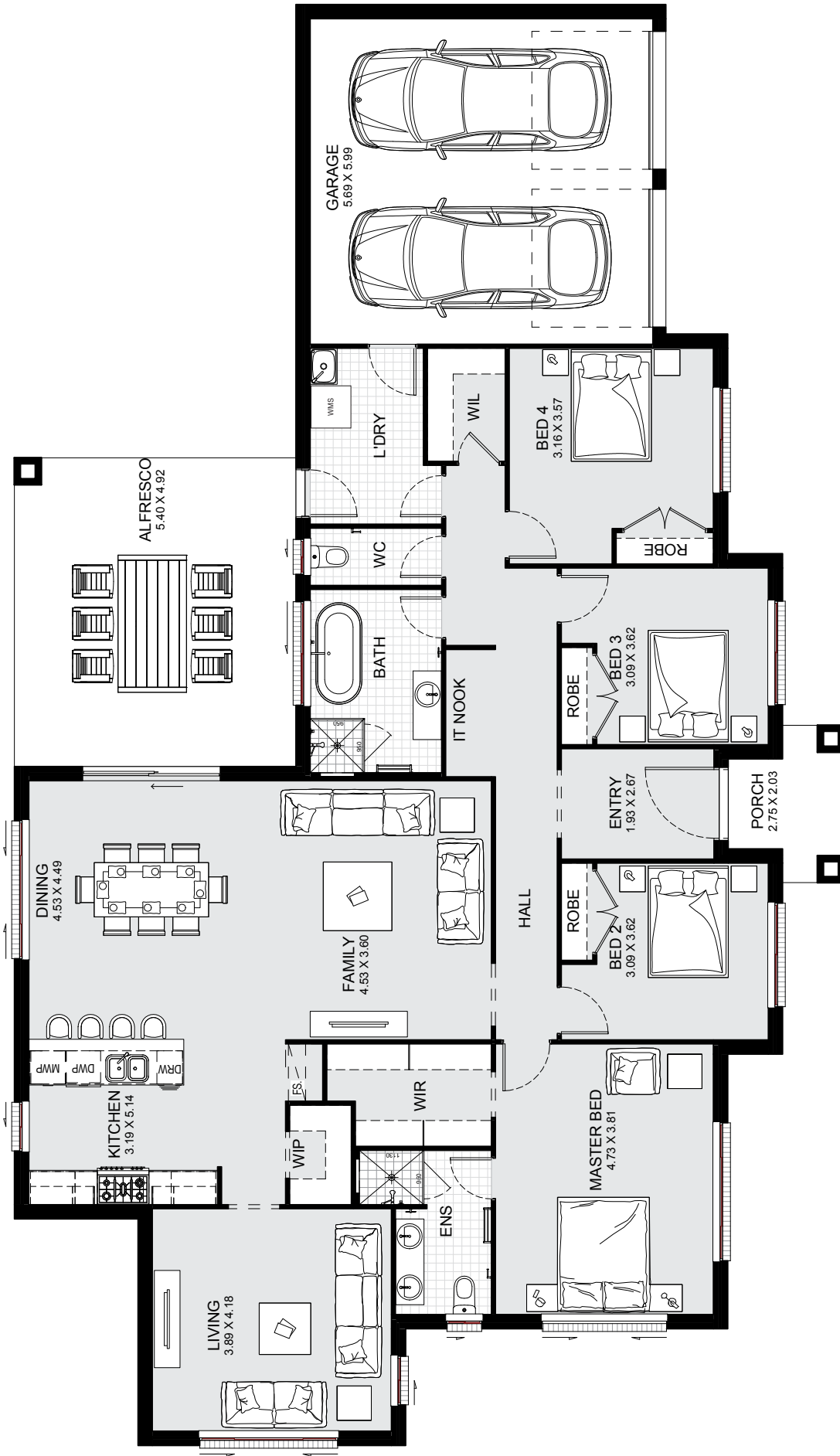
acreage living

RIVERVIEW 49

 5
  3.5
  3

ground:	313.43m ²	porch:	21.33m ²	total:	455.06m ²	width:	29.39m
garage:	58.65m ²	alfresco:	61.66m ²	squares:	49sq	depth:	16.90m

DISCLAIMER: Floorplans, facades and photography are for illustrative purposes and should be used as a guide only. Plans may include upgrade items above the standard specification. Details are correct at the time of printing and are subject to change without notice. Issued 08.09.2023. Lic No. 205 457C.



WATERGUM 28



ground:	190.80m ²	porch:	4.46m ²	total:	260.24m ²	width:	25.19m
garage:	38.43m ²	alfresco:	26.54m ²	squares:	28sq	depth:	14.51m

acreage living

ACREAGE LIVING FACADE COLLECTION



FAIRMONT-CLASSIC



FAIRMONT-ESSENCE



FAIRMONT-HAMPTON



FAIRMONT-NEW ENGLAND



FAIRMONT-PRESTIGE



FAIRMONT-TRADITIONAL



HOPEWOOD-BOWRAL



HOPEWOOD-CLASSIC

ACREAGE LIVING FACADE COLLECTION



HOPEWOOD-HAMPTON



HOPEWOOD-MODERN



HOPEWOOD-NEW ENGLAND



HOPEWOOD-TRADITIONAL



HOPEWOOD-OLD ENGLAND



HOPEWOOD-ULTRA MODERN



MIRAGE-CLASSIC



MIRAGE-ESSENCE

ACREAGE LIVING FACADE COLLECTION



MIRAGE-BOWEN



MIRAGE-CONTEMPORARY



MIRAGE-HARTLEY



MIRAGE-NEW-ENGLAND



MIRAGE-HAMPTON



MIRAGE-PRESTIGE



MIRAGE-TRADITIONAL



RIVERVIEW-TRADITIONAL

ACREAGE LIVING FACADE COLLECTION



RIVERVIEW-CLASSIC



RIVERVIEW-ESSENCE



RIVERVIEW-NEW-ENGLAND



RIVERVIEW - HAMPTON



WATERGUM-TRADITIONAL



WATERGUM-NEW-ENGLAND



WATERGUM-CLASSIC



WATERGUM-PRESTIGE

ACREAGE LIVING FACADE COLLECTION



WATERGUM-ESSENCE



WATERGUM-HAMPTON







K kurmondhomes

Building together
for generations

CALL US TODAY 1300 764 761 | WWW.KURMONDHOMES.COM.AU

**HEMOWORLD
MARSDEN PARK**

Ellison Street, Marsden Park

**HEMOWORLD
BOX HILL**

Gittel Street, Box Hill

**LEPPINGTON LIVING
LEPPINGTON**

Saturn St, Leppington

**HEMOWORLD
LEPPINGTON**

Berkshire Circuit, Leppington

Visit our display homes & speak to one of our home consultants

Designs may not be reproduced or copies, either wholly or in part, without permission. Issued 15.01.2024. Lic No. 205 457C