

DUPLEX AND DUAL LIVING DESIGNS



kurmondhomes



CONTENTS

DUPLEX

14M LOT WIDTH

Arcadian 57	4
Lennox 50	5

15M LOT WIDTH

Castlereagh 46	6
Norfolk 52	7
Oak 42	8

17.5M LOT WIDTH

Forest Glen 52	9
----------------	---

18M LOT WIDTH

Redleaf 39	10
------------	----

DUAL LIVING

12.5M LOT WIDTH

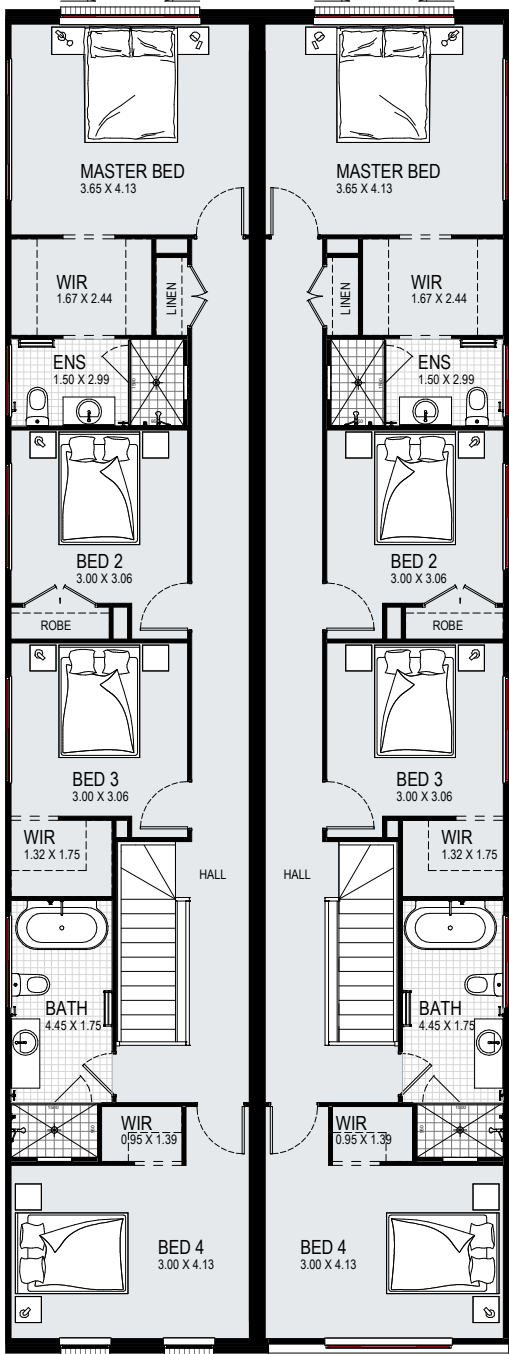
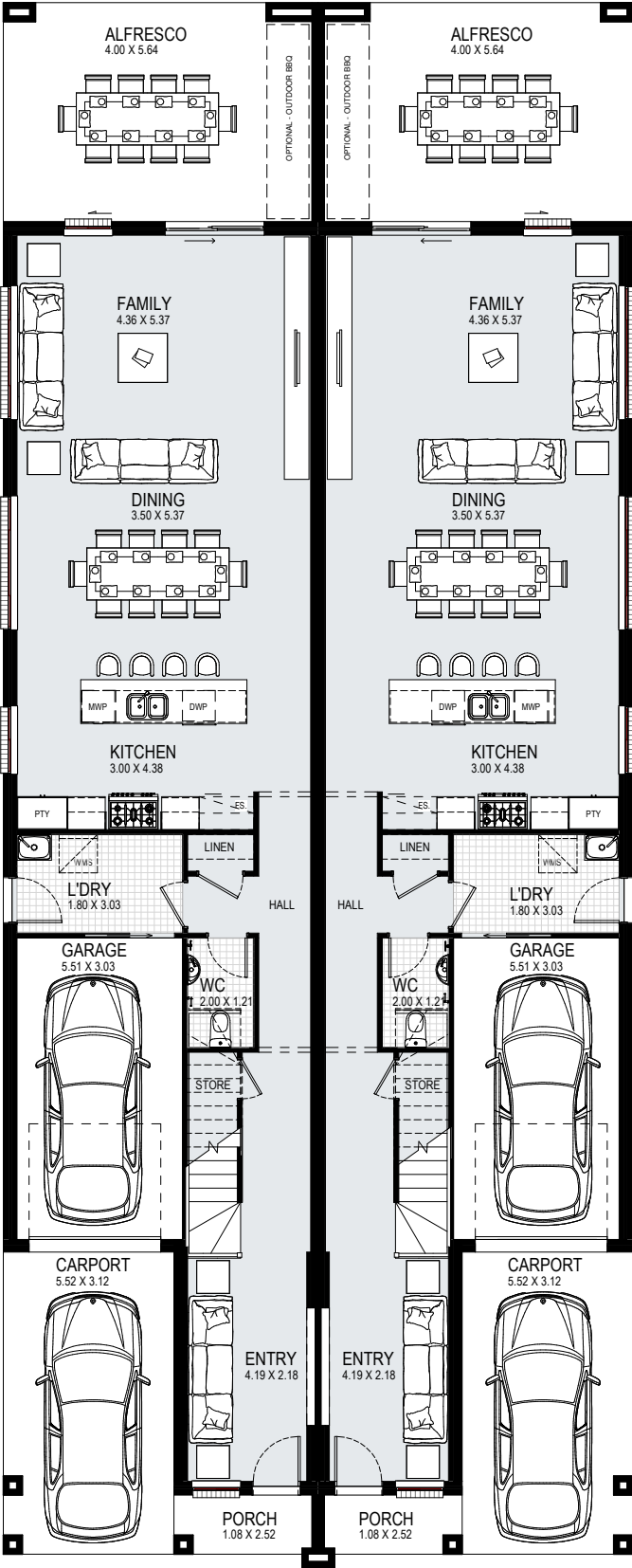
Affinity 37 MK2 Dual	18
----------------------	----

15M LOT WIDTH

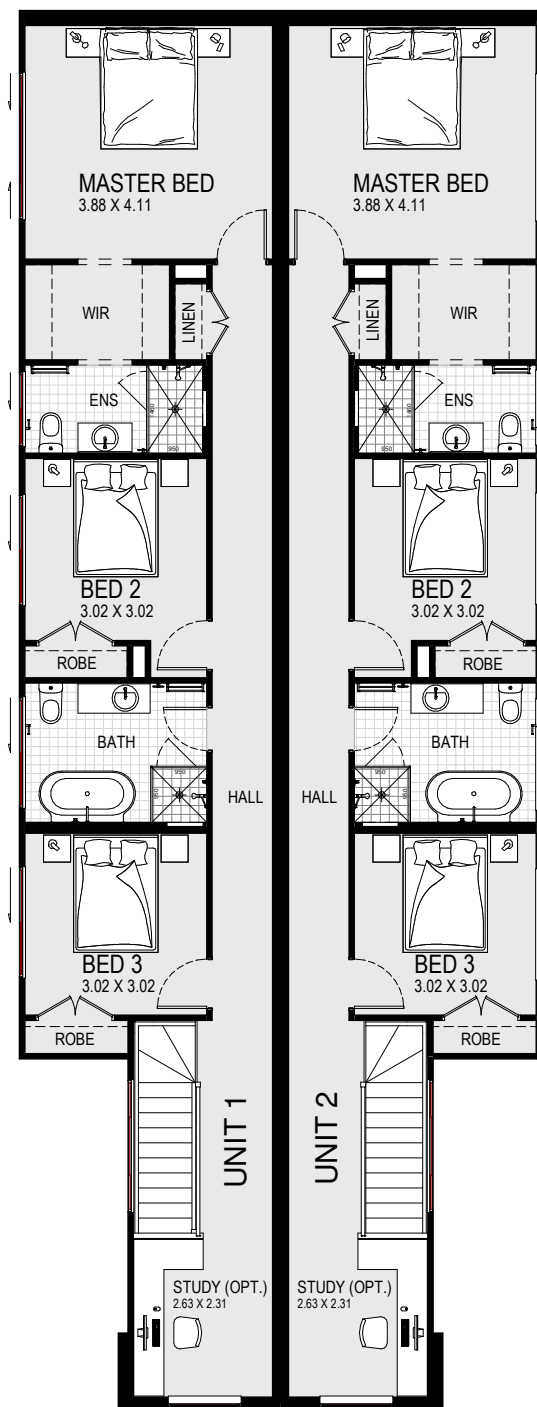
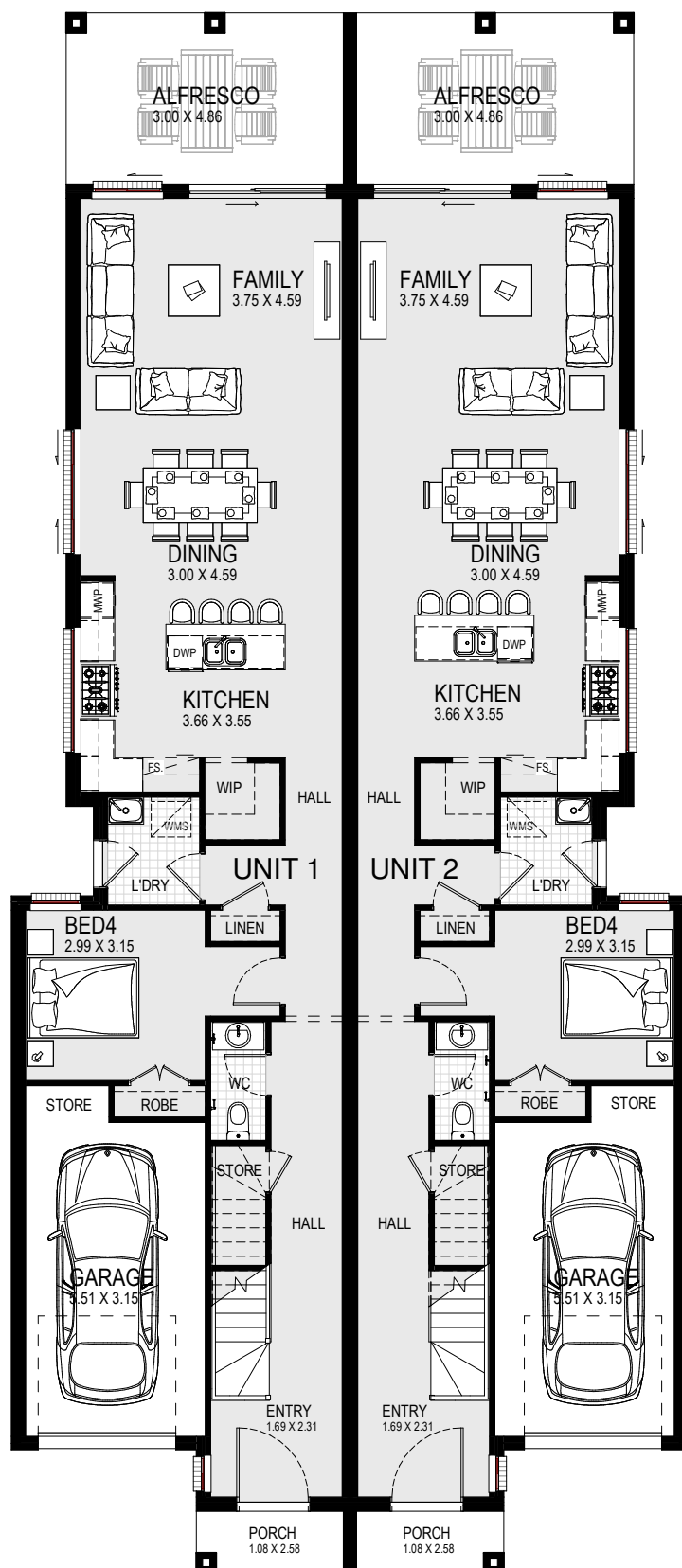
Affinity 41 Dual	19
Coral 34 Dual	20
Madison 33 Dual	21
Melody 45 Dual	22
Newport 25 Dual	23

17.5M LOT WIDTH

Evoque 37 Dual	24
Pavillion 32 Dual	25



<div>suits</div> <div>14m+</div> <div>lot width</div>	ARCADIAN 57					 8	 5	 4
	ground:	202.50m ²	garage:	37.66m ²	alfresco:	46.04m ²	width:	11.51m
	first:	195.34m ²	porch:	5.84m ²	total:	529.15m ²	depth:	28.71m



14m

15m

17.5m

18m

suits
14m+
lot width

LENNOX 50

8 5 2

ground:	202.52m ²	garage:	41.22m ²	alfresco:	29.86m ²	width:	11.87m
first:	173.60m ²	porch:	5.82m ²	total:	460.49m ²	depth:	27.35m

DISCLAIMER: Floorplans, facades and photography are for illustrative purposes and should be used as a guide only. Plans may include upgrade items above the standard specification. Details are correct at the time of printing and are subject to change without notice. Issued 16.10.2023. Lic No. 205 457C.

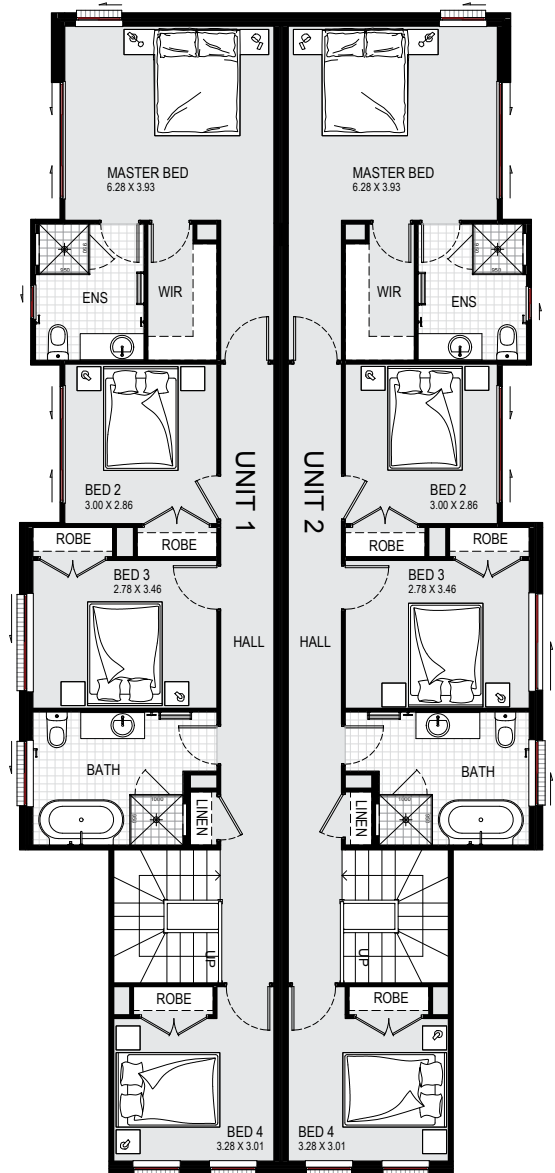
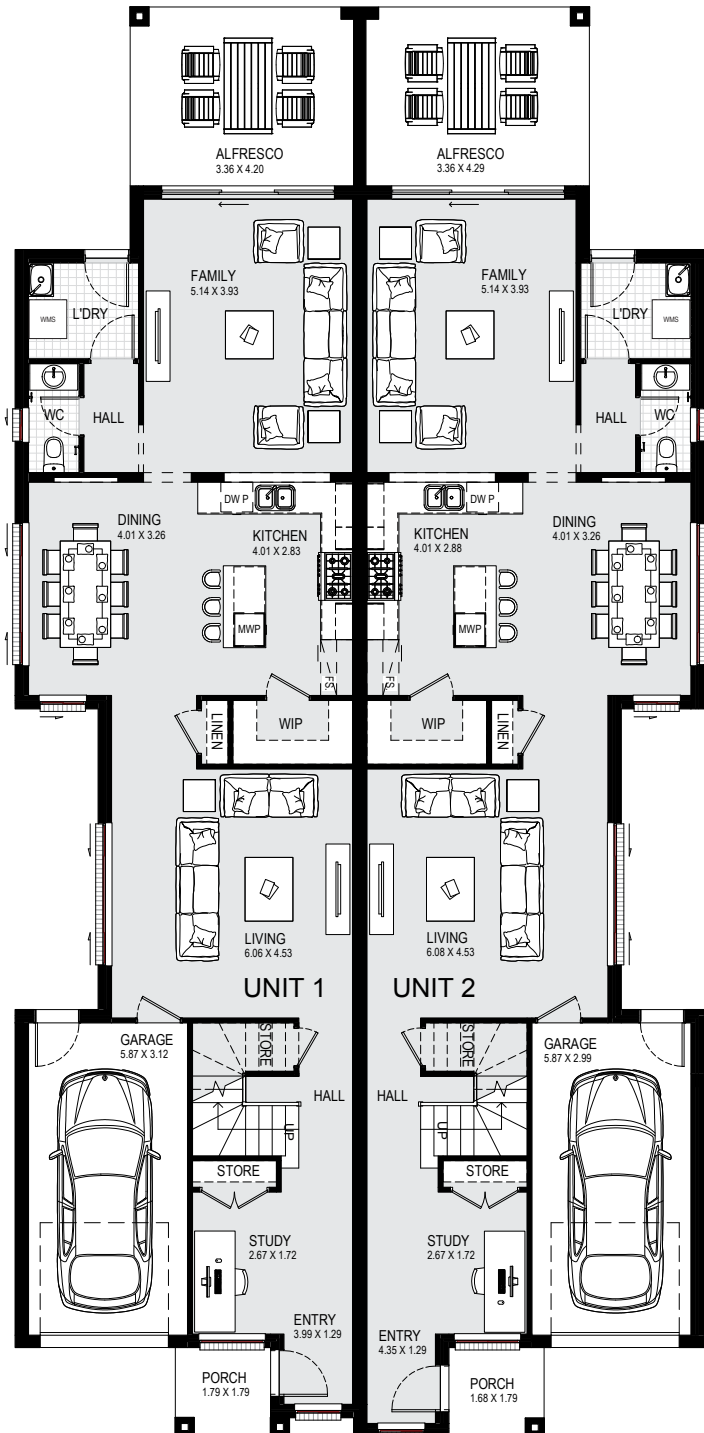
KURMOND HOMES DUPLEX AND DUAL LIVING | 5

14m

15m

17.5m

18m



suits
15m+
lot width

NORFOLK 52

8 5 2

ground:	224.64m ²	garage:	40.30m ²	alfresco:	29.00m ²	width:	12.95m
first:	172.96m ²	porch:	6.12m ²	total:	483.03m ²	depth:	26.87m

DISCLAIMER: Floorplans, facades and photography are for illustrative purposes and should be used as a guide only. Plans may include upgrade items above the standard specification. Details are correct at the time of printing and are subject to change without notice. Issued 16.10.2023. Lic No. 205 457C.

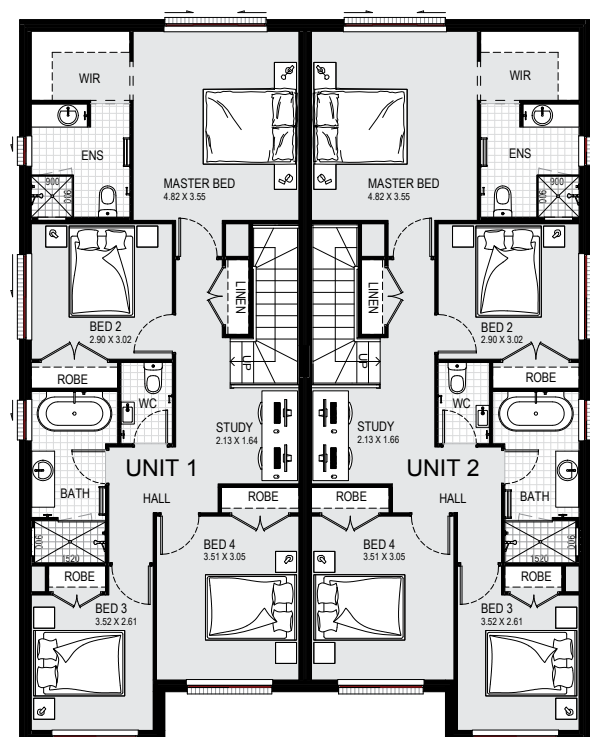
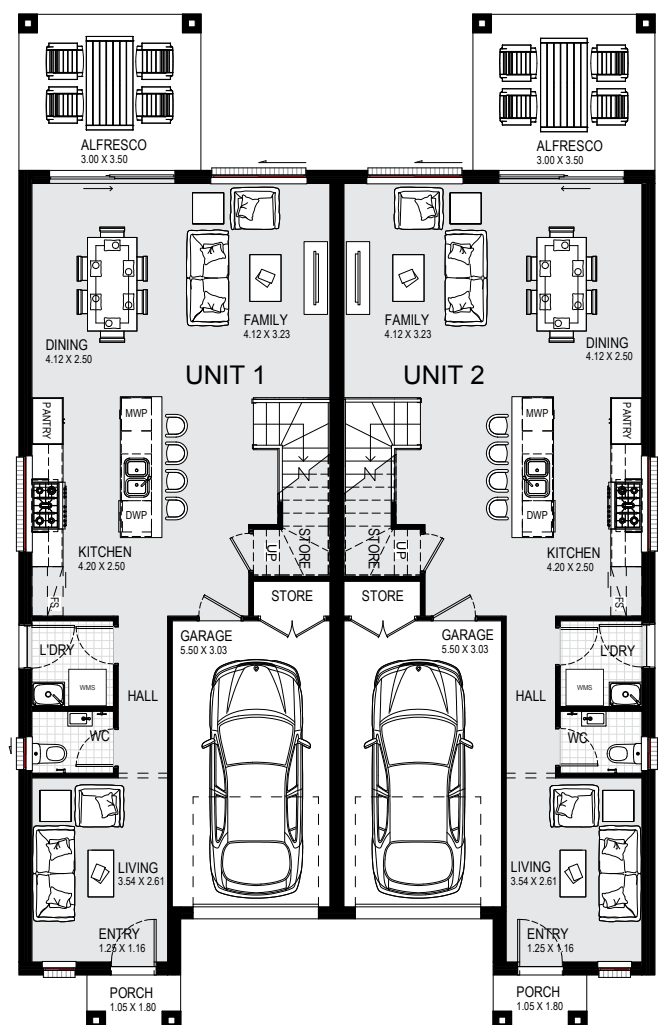
KURMOND HOMES DUPLEX AND DUAL LIVING | 7

14m

15m

17.5m

18m



suits
15m+
lot width

OAK 42



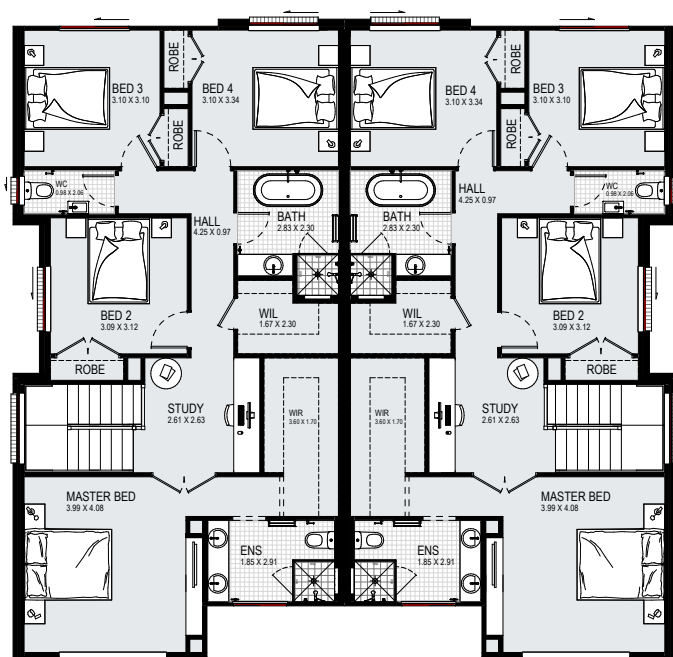
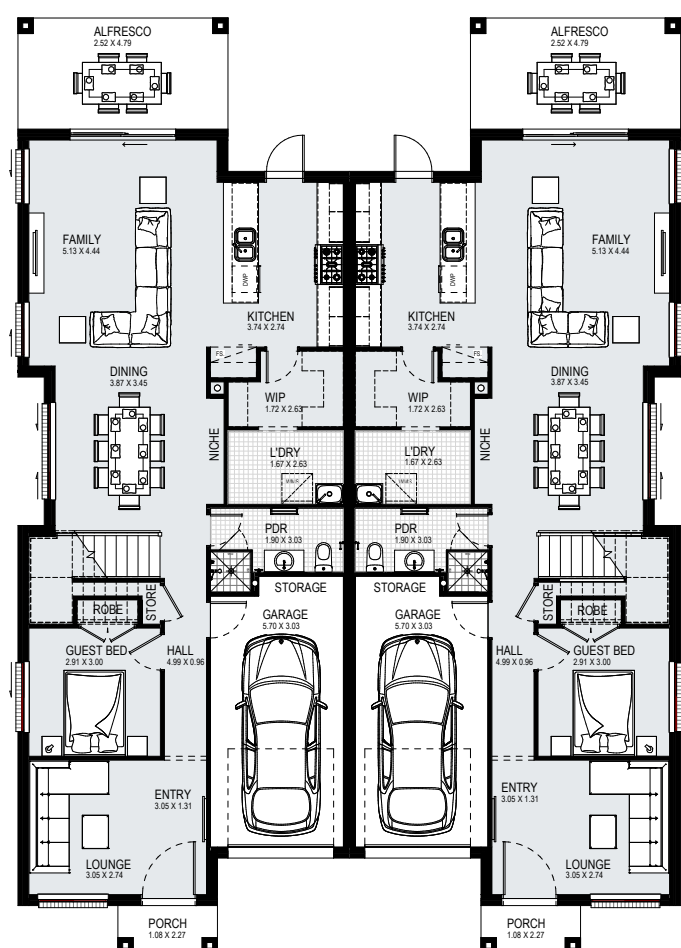
ground:	146.44m ²	garage:	36.28m ²	alfresco:	21.00m ²	width:	12.23m
first:	174.88m ²	porch:	3.78m ²	total:	390.19m ²	depth:	19.52m

14m

15m

17.5m

18m



suits
17.5m+
lot width

FOREST GLEN 52

 10  6  2

ground:	211.02m ²	garage:	39.52m ²	alfresco:	24.14m ²	width:	15.11m
first:	196.94m ²	porch:	4.90m ²	total:	486.89m ²	depth:	21.23m

DISCLAIMER: Floorplans, facades and photography are for illustrative purposes and should be used as a guide only. Plans may include upgrade items above the standard specification. Details are correct at the time of printing and are subject to change without notice. Issued 16.10.2023. Lic No. 205 457C.

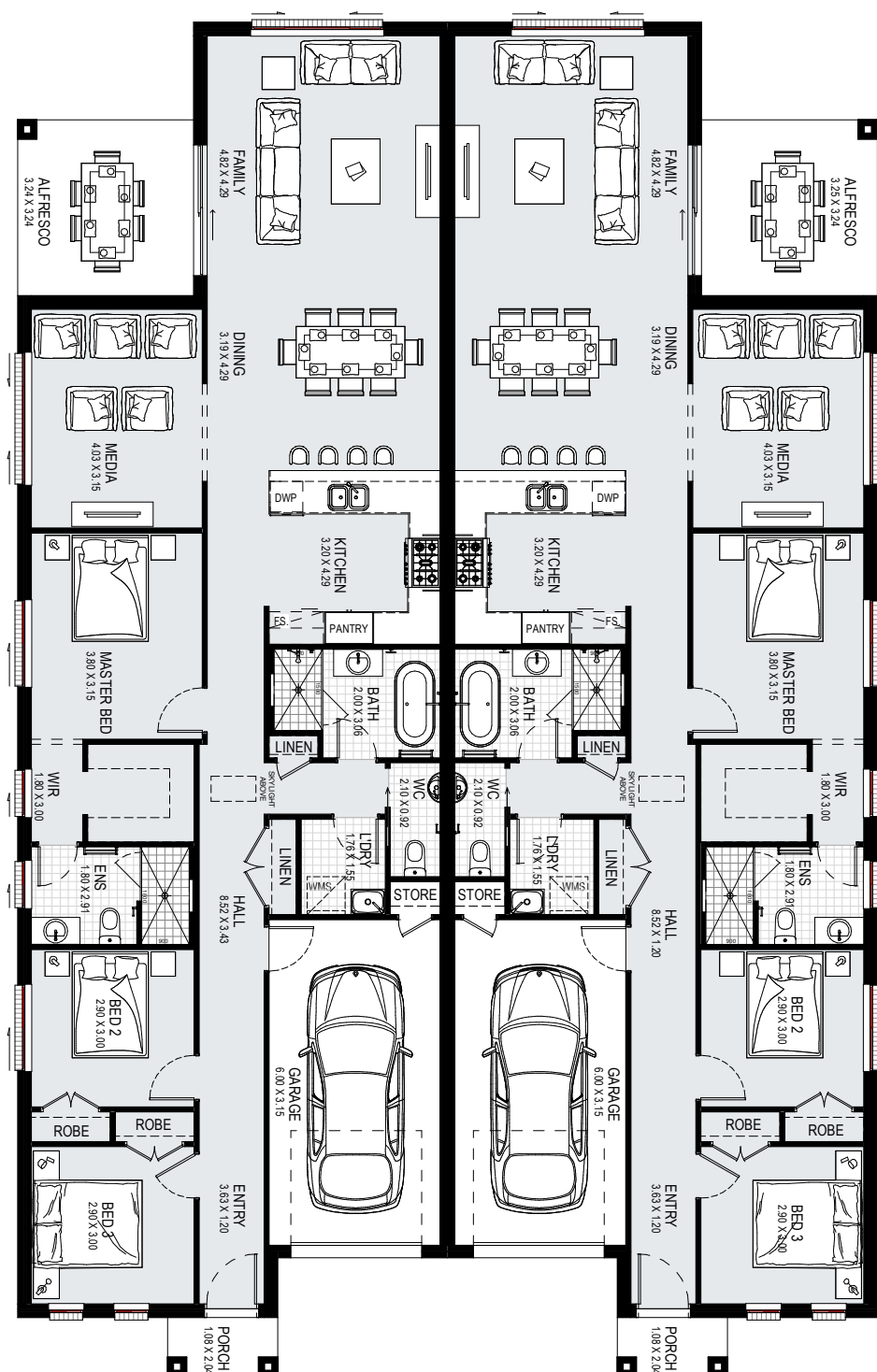
KURMOND HOMES DUPLEX AND DUAL LIVING | 9

14m

15m

17.5m

18m



suits
18m+
lot width

REDLEAF 39



ground:	293.90m ²	porch:	4.38m ²	total:	363.55m ²	width:	15.83m
garage:	44.26m ²	alfresco:	21m ²	squares:	39sq	depth:	24.94m



DUPLEX LIVING FACADE COLLECTION



ARCADIAN-LUXFORD



ARCADIAN-TERRACE



ARCADIAN-TRADITIONAL



CASTLEREAGH-MODERN



CASTLEREAGH-MATRIX



CASTLEREAGH-TRAD.



CASTLEREAGH-NEW.HAMP.



CASTLEREAGH-ULTRA-M.

DUPLEX LIVING FACADE COLLECTION



FORESTGLEN-ULTRA-M.



FORESTGLEN-TRAD.



FORESTGLEN-NEW-HAMP.



FORESTGLEN-CLASSIC



FORESTGLEN-CORP.



LENNOX-MODERN



LENNOX-CORPORATE



LENNOX-ULTRA-MODERN

DUPLEX LIVING FACADE COLLECTION



LENNOX-TRADITIONAL



NORFOLK-TRAD.



NORFOLK-CLASSIC



NORFOLK-MODERN



NORFOLK-ULTRA-MODERN



OAK-TRADITIONAL



OAK-CORPORATE



OAK-NEW-HAMPSHIRE

DUPLEX LIVING FACADE COLLECTION



REDLEAF-DELTA



REDLEAF-TRADITIONAL



REDLEAF-MODERN



WILSHIRE-WILLOUGHBY



WILSHIRE-TRADITIONAL

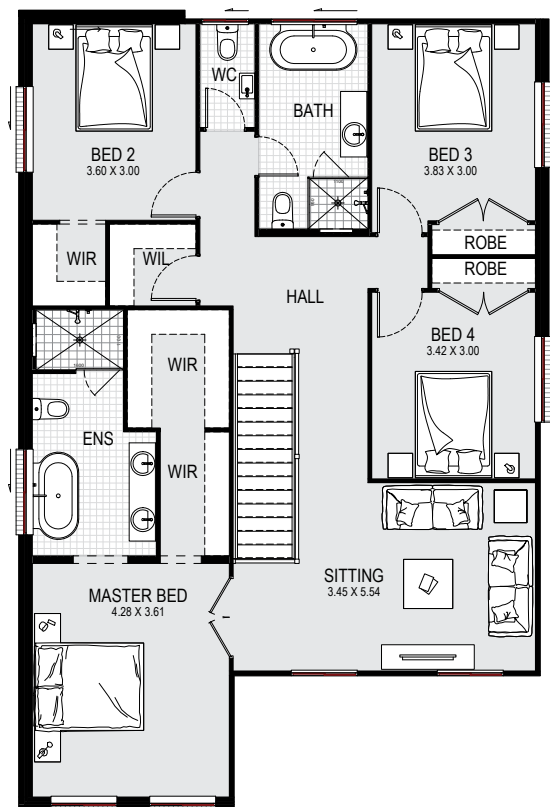
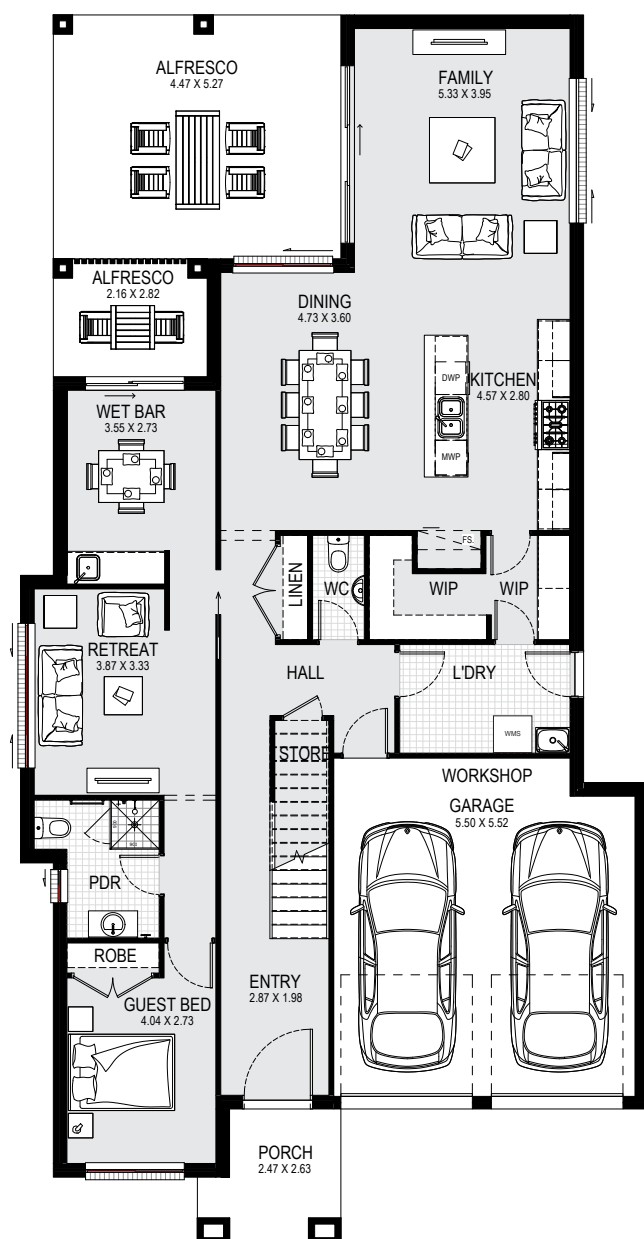




12.5m

15m

17.5m



suits
12.5m+
lot width

AFFINITY 37 MK2 DUAL

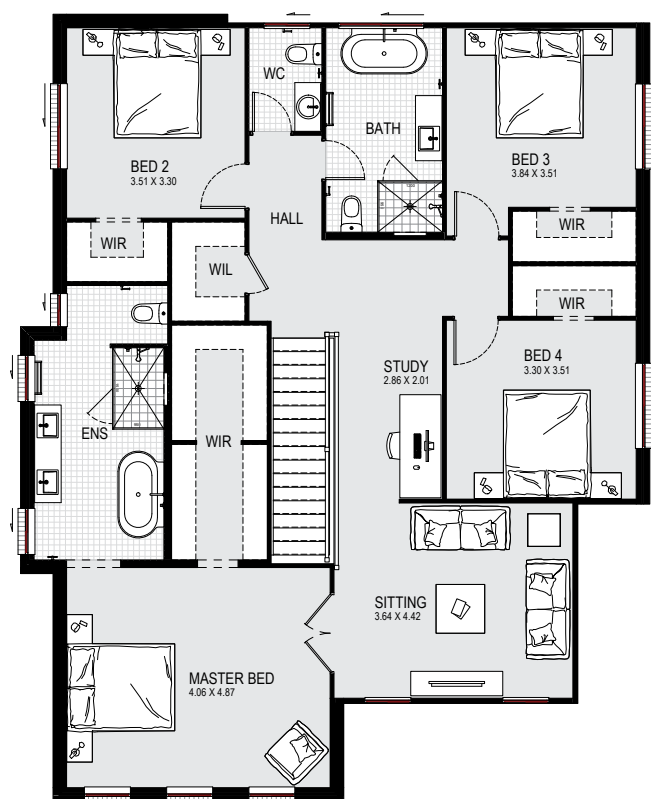
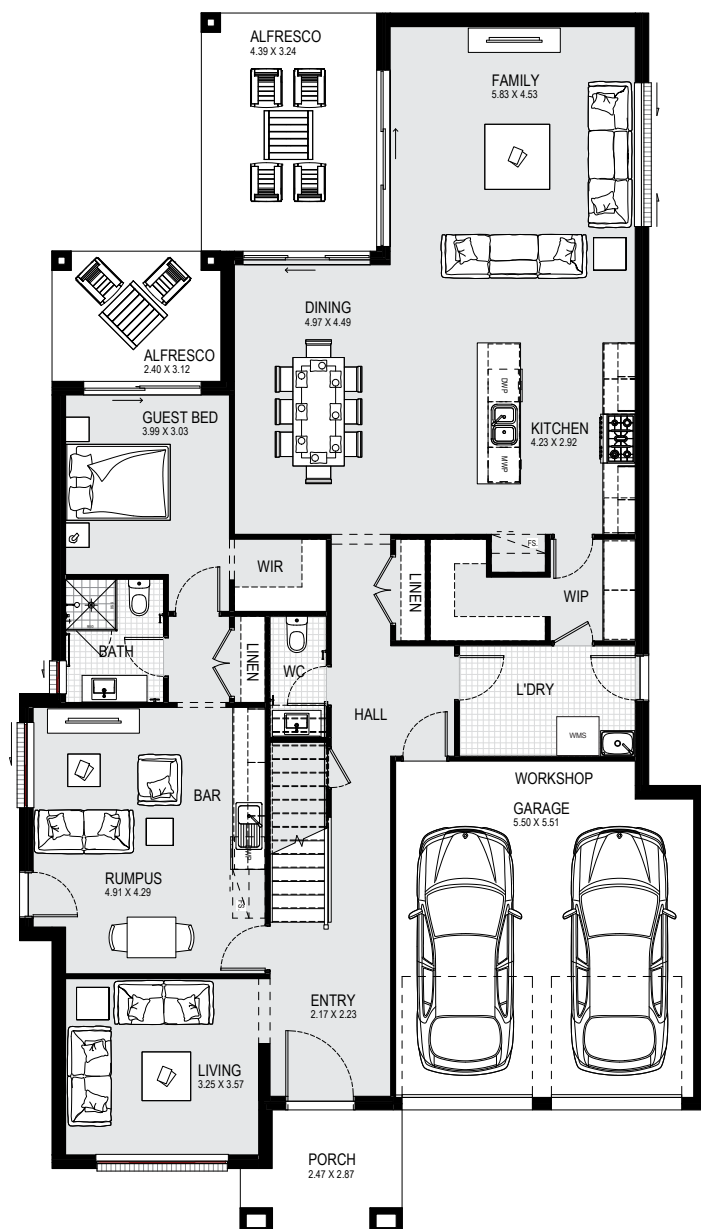
5 3.5 2

ground:	142.99m ²	garage:	36.57m ²	alfresco:	29.65m ²	width:	11.51m
first:	122.33m ²	porch:	5.76m ²	total:	341.49m ²	depth:	22.52m

12.5m

15m

17.5m



suits
15m+
lot width

AFFINITY 41 DUAL

5 3.5 2

ground:	166.23m ²	garage:	36.55m ²	alfresco:	21.71m ²	width:	12.71m
first:	141.37m ²	porch:	6.18m ²	total:	376.96m ²	depth:	22.50m

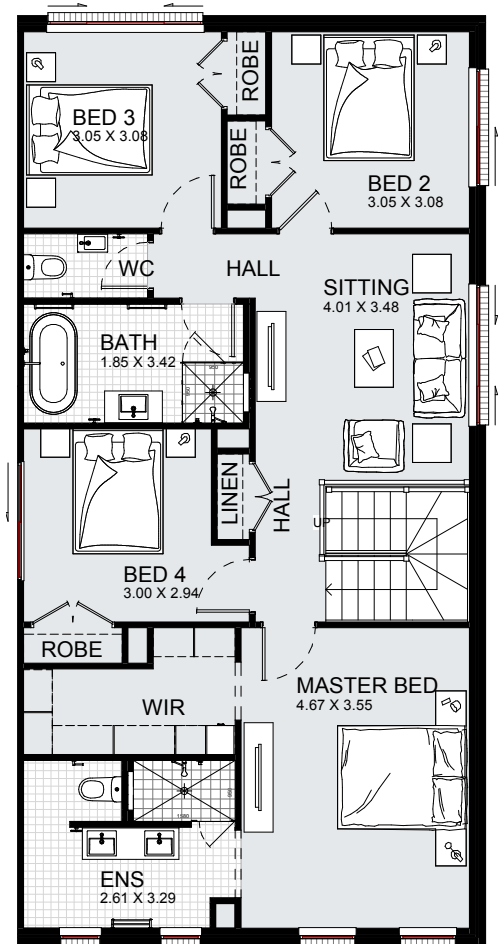
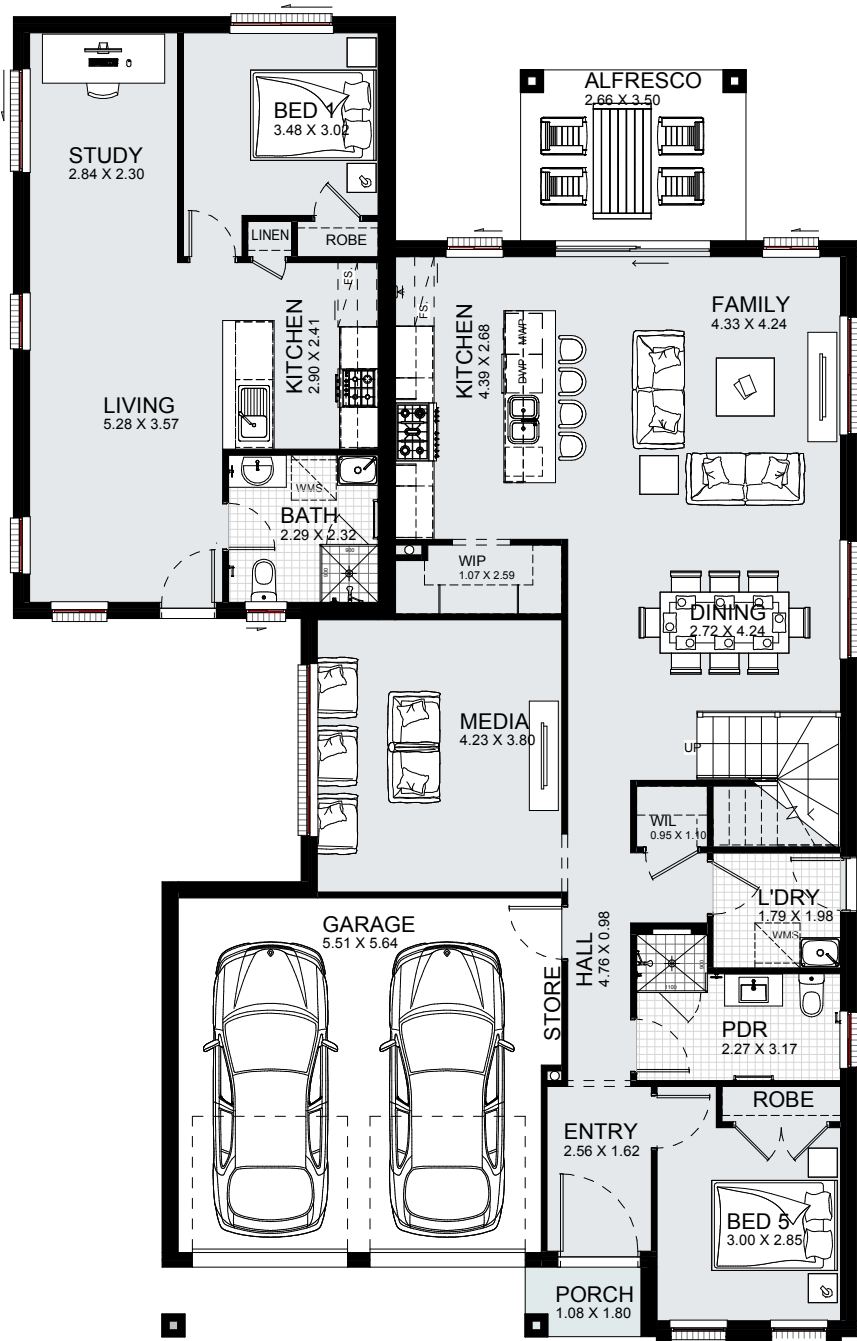
DISCLAIMER: Floorplans, facades and photography are for illustrative purposes and should be used as a guide only. Plans may include upgrade items above the standard specification. Details are correct at the time of printing and are subject to change without notice. Issued 16.10.2023. Lic No. 205 457C.

KURMOND HOMES DUPLEX AND DUAL LIVING | 19

12.5m

15m

17.5m



suits
15m+
lot width

CORAL 34 DUAL

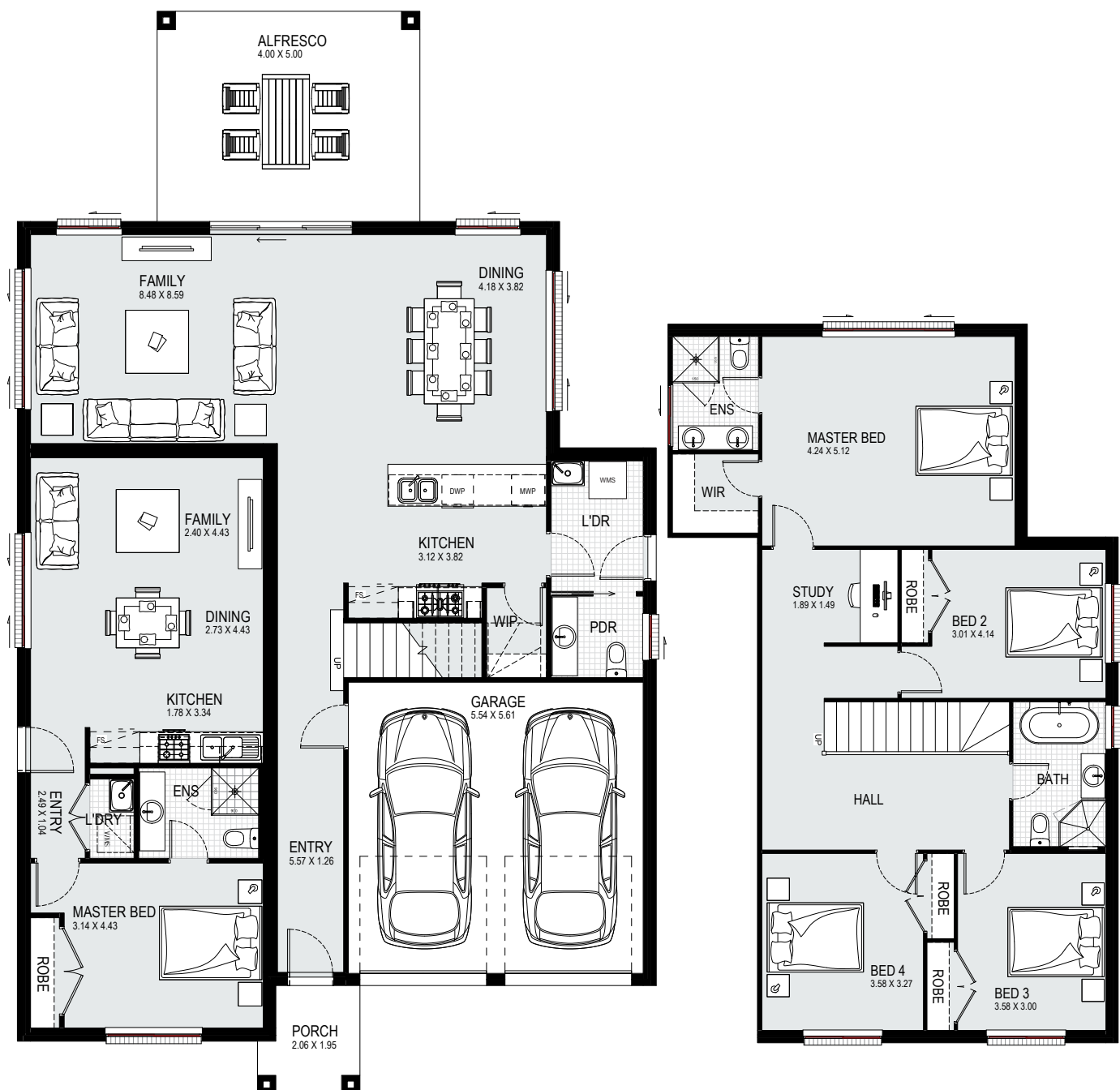
6 4 2

ground:	111.11m ²	granny flat:	55.10m ²	porch:	1.94m ²	total:	323.78m ²	width:	13.10m
first:	101.10m ²	garage:	35.79m ²	alfresco:	14.03m ²	squares:	34sq	depth:	20.63m

12.5m

15m

17.5m



suits
15m+
lot width

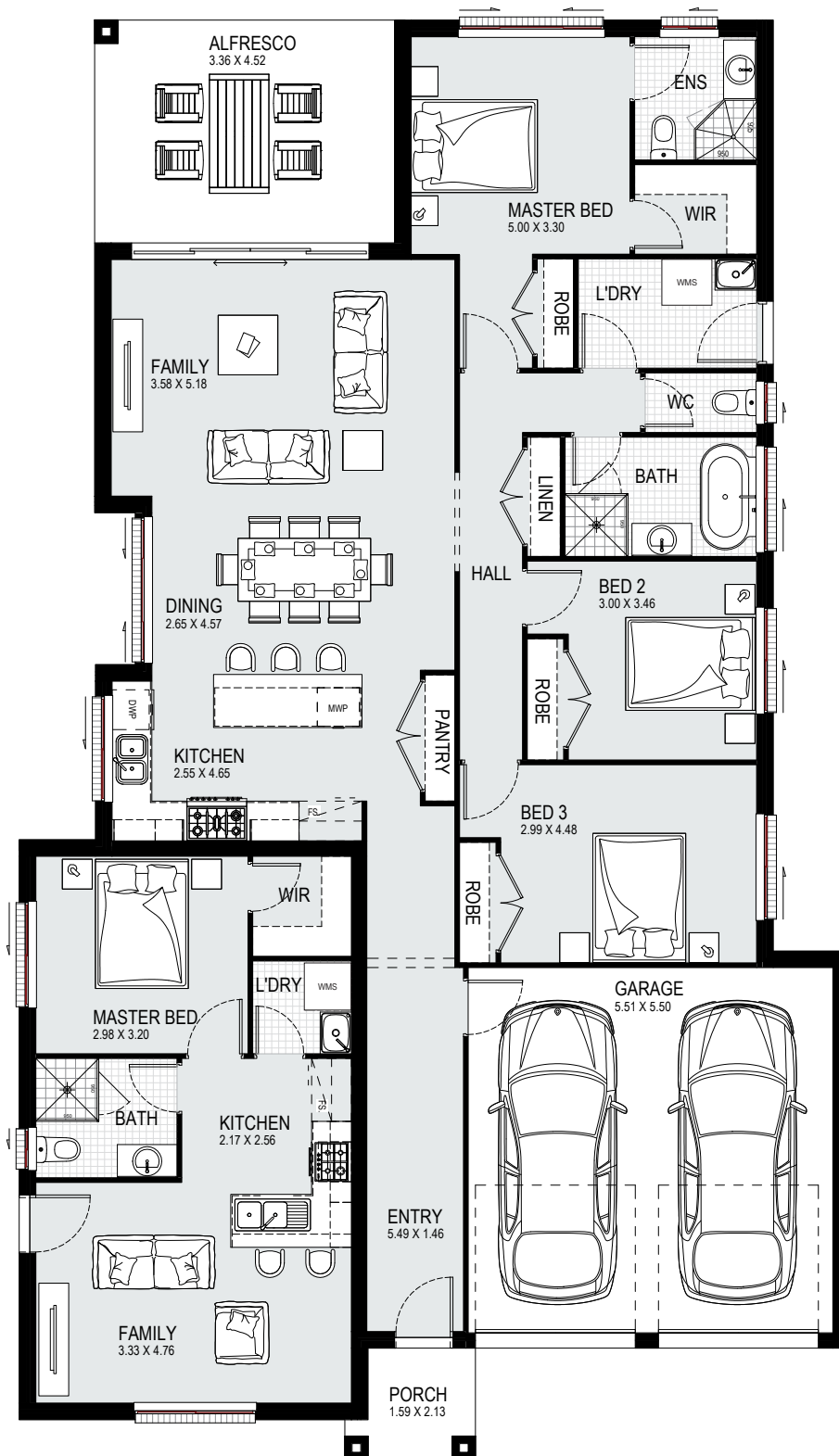
MADISON 33 DUAL

5 3.5 2

ground:	86.06m ²	granny flat:	54.22m ²	porch:	3.64m ²	total:	303.76m ²	width:	12.16m
first:	102.13m ²	garage:	33.81m ²	alfresco:	20.00m ²	squares:	33sq	depth:	20.60m

DISCLAIMER: Floorplans, facades and photography are for illustrative purposes and should be used as a guide only. Plans may include upgrade items above the standard specification. Details are correct at the time of printing and are subject to change without notice. Issued 16.10.2023. Lic No. 205 457C.

KURMOND HOMES DUPLEX AND DUAL LIVING | 21



12.5m

15m

17.5m

suits
15m+
lot width

NEWPORT 25 DUAL



ground:	132.00m ²	garage:	33.29m ²	alfresco:	15.20m ²	width:	12.52m
granny flat:	44.33m ²	porch:	2.93m ²	total:	227.75m ²	depth:	21.65m

DISCLAIMER: Floorplans, facades and photography are for illustrative purposes and should be used as a guide only. Plans may include upgrade items above the standard specification. Details are correct at the time of printing and are subject to change without notice. Issued 16.10.2023. Lic No. 205 457C.

KURMOND HOMES DUPLEX AND DUAL LIVING | 23

12.5m

15m

17.5m



suits
17.5m+
lot width

EVOQUE 37 DUAL



ground:	117.43m ²	granny flat:	58.07m ²	porch:	2.19m ²	total:	342.84m ²	width:	13.19m
first:	107.51m ²	garage:	33.38m ²	alfresco:	20.00m ²	squares:	37sq	depth:	22.26m

SINGLE STOREY DUAL LIVING FACADE COLLECTION



AURORA



ALBANY



AVENUE K



BARCLAY



BOWERY



BROADWAY



BUFFALO



EPIC

SINGLE STOREY DUAL LIVING FACADE COLLECTION



HAMPTON



HEMPSTEAD

SINGLE STOREY DUAL LIVING FACADE COLLECTION



HOUSTON



JET



PYRMONT



TRADITIONAL



TREND



WOODHAVEN

DOUBLE STOREY DUAL LIVING FACADE COLLECTION



MADISON-METROPOLIS



MADISON SOHO-MKII



MADISON-SOHO



MADISON-RETRO



MADISON-ODYSSEY



MADISON-TRADITIONAL

DOUBLE STOREY DUAL LIVING FACADE COLLECTION



MELODY-TRADITIONAL



MELODY-MATRIX



MELODY-COSMOPOLITAN



MELODY-PRESIDENT



MELODY-WOOLLAHRA



MELODY-CLOVELLY

DOUBLE STOREY DUAL LIVING FACADE COLLECTION



AFFINITY, CORAL & EVOQUE- MATRIX



AFFINITY, CORAL & EVOQUE - PROVIDENCE



AFFINITY, CORAL, EVOQUE - VOGUE



AFFINITY, CORAL & EVOQUE - MELODY



AFFINITY, CORAL & EVOQUE - STELLA



AFFINITY, CORAL, EVOQUE - TRAD.



EVOQUE - BALMORAL



kurmondhomes

**Building together
for generations**

CALL US TODAY 1300 764 761 | WWW.KURMONDHOMES.COM.AU

**HEMEWORLD
MARSDEN PARK**

Ellison Street, Marsden Park

**HEMEWORLD
BOX HILL**

Gittel Street, Box Hill

**LEPPINGTON LIVING
LEPPINGTON**

Saturn St, Leppington

**HEMEWORLD
LEPPINGTON**

Berkshire Circuit, Leppington

Visit our display homes & speak to one of our home consultants

Designs may not be reproduced or copies, either wholly or in part, without permission. Issued 16.10.2023. Lic No. 205 457C