

Display



Opal 27 Kurmond Homes

Base price \$275,080
View Koorala Gardens and Illoura Way,
 Jordan Springs (Penrith)
Open Wednesday-Sunday, 10am-5pm
Phone 1300 764 761
Web kurmondhomes.com.au

DETAILS

Area 250.30sq m
Width 12.95m **Depth** 20.39m
Facades 16
Alfresco Included



A rare find for family fun

This gem of a design crafts everything into one level, writes **Jennifer Veerhuis**

The opal is considered the national gemstone of Australia — a stone known for its unique qualities.

So it's quite fitting that Kurmond Homes have named its newest design the Opal.

It's a single-storey, four-bedroom house with special touches designed to make living in it more enjoyable.

There's a wide entry hall and an IT nook as well as a stylish kitchen and bathrooms, and an alfresco area that can be accessed from the open-plan kitchen and living space.

Suited to young and growing families, it offers a functional floorplan, with the main bedroom located separately from the smaller bedrooms and a central living area designed for everyone.

Storage is all important for most families and this hasn't been forgotten, with two linen cupboards included — one outside the laundry and the other situated at the rear near two of the bedrooms.

Kurmond's Opal 27 suits a 15m lot width and can be customised according to need.

It's displayed at Jordan Springs with the Crimson facade, one of 16 facade options.

Living

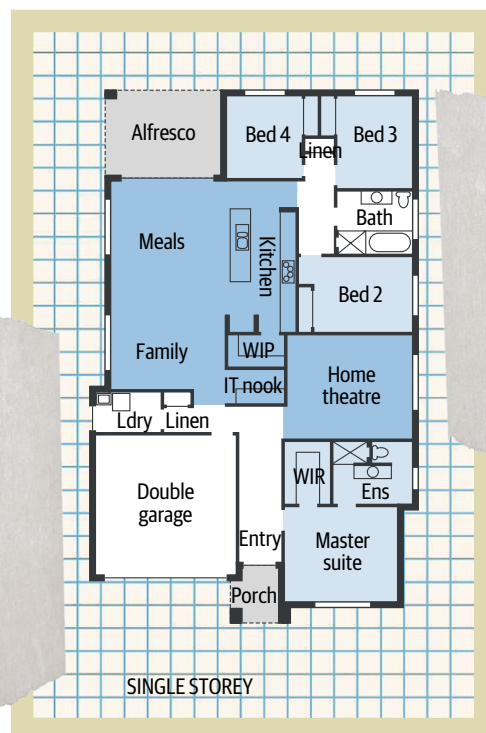
On entering the house, the wide foyer leads through to the home theatre.

A room of generous proportions, it would be an ideal spot to enjoy watching sport or a movie night in peace.

The combined kitchen, meals and family area is at the heart of the design, with the meals area leading outside to an alfresco area, which is included in the price.

The kitchen offers ample bench space, including an island bench and there is also a walk-in pantry with plenty of storage.

Tucked away behind the walk-in pantry is



an IT nook, offering the perfect place for children to do their homework or anyone to use a computer.

The laundry is also close by and leads directly outdoors.

Bedrooms

The Opal 27 has four bedrooms, with the main bedroom at the front, offering space and privacy for parents.

It comes with a walk-in robe with plenty of

space for clothes storage and the ensuite includes a shower and toilet, partly hidden behind a vanity wall.

The three remaining bedrooms open from a shared hall towards the rear of the design and each has a built-in robe.

They are all grouped around the main bathroom, which includes a vanity, toilet, shower and bath.

jennifer.veerhuis@news.com.au

Pictures Bob Barker

WE'RE LOVING

The main bedroom is like a sanctuary for parents at the front of the design

The kitchen has a walk-in pantry

The open-plan kitchen, family and meals area leads to the alfresco area