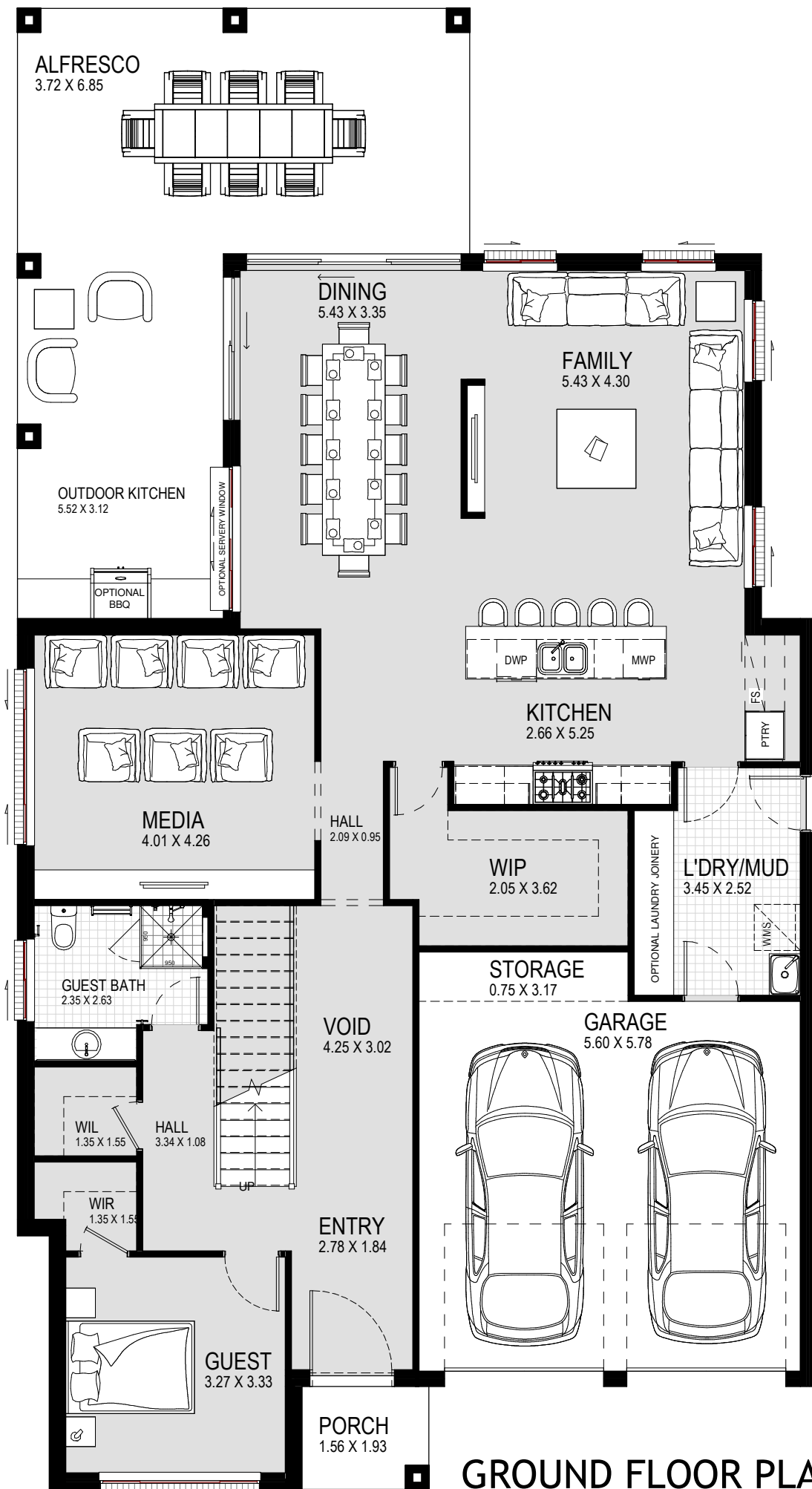
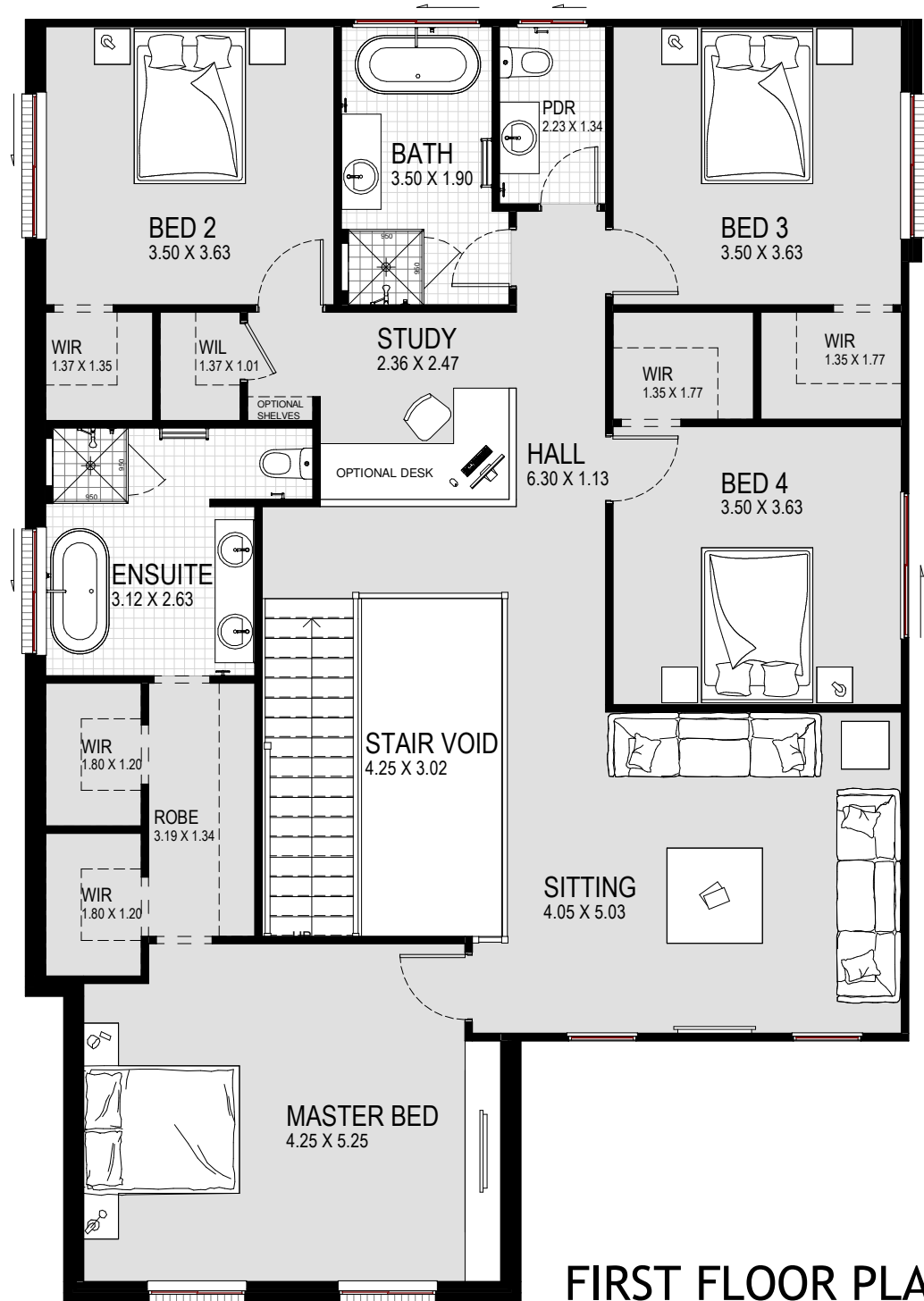




SUITABLE FOR:
15m + FRONTAGE



GROUND FLOOR PLAN



FIRST FLOOR PLAN

EVOQUE 43
CONCEPT FACADE

GROUND FLOOR	153.18 m ²	16.49
FIRST FLOOR	149.00 m ²	16.04
GARAGE	37.53 m ²	4.04
PORCH	3.00 m ²	0.32
ALFRESCO	42.70 m ²	4.60
STAIR VOID	12.81 m ²	1.38
TOTAL	398.22 m ²	42.87

TOTAL WIDTH:12.11 m TOTAL LENGTH:22.43 m

BROCHURE PLAN

kurmondhomes PTY LTD
BUILDERS LICENCE: 205 457C ABN: 481 288 211 98

10 Sovereign Place
South Windsor
NSW 2756. © COPYRIGHT

T: 1300 764 761
F: (02) 4577 6332

ALL RIGHTS RESERVED. This plan is the property of KURMOND HOMES PTY LTD. Copyright in this documents is owned by KURMOND HOMES PTY LTD. Under the provisions of the Copyright ACT 1968 and is intended for use only as authorised by KURMOND HOMES PTY LTD.