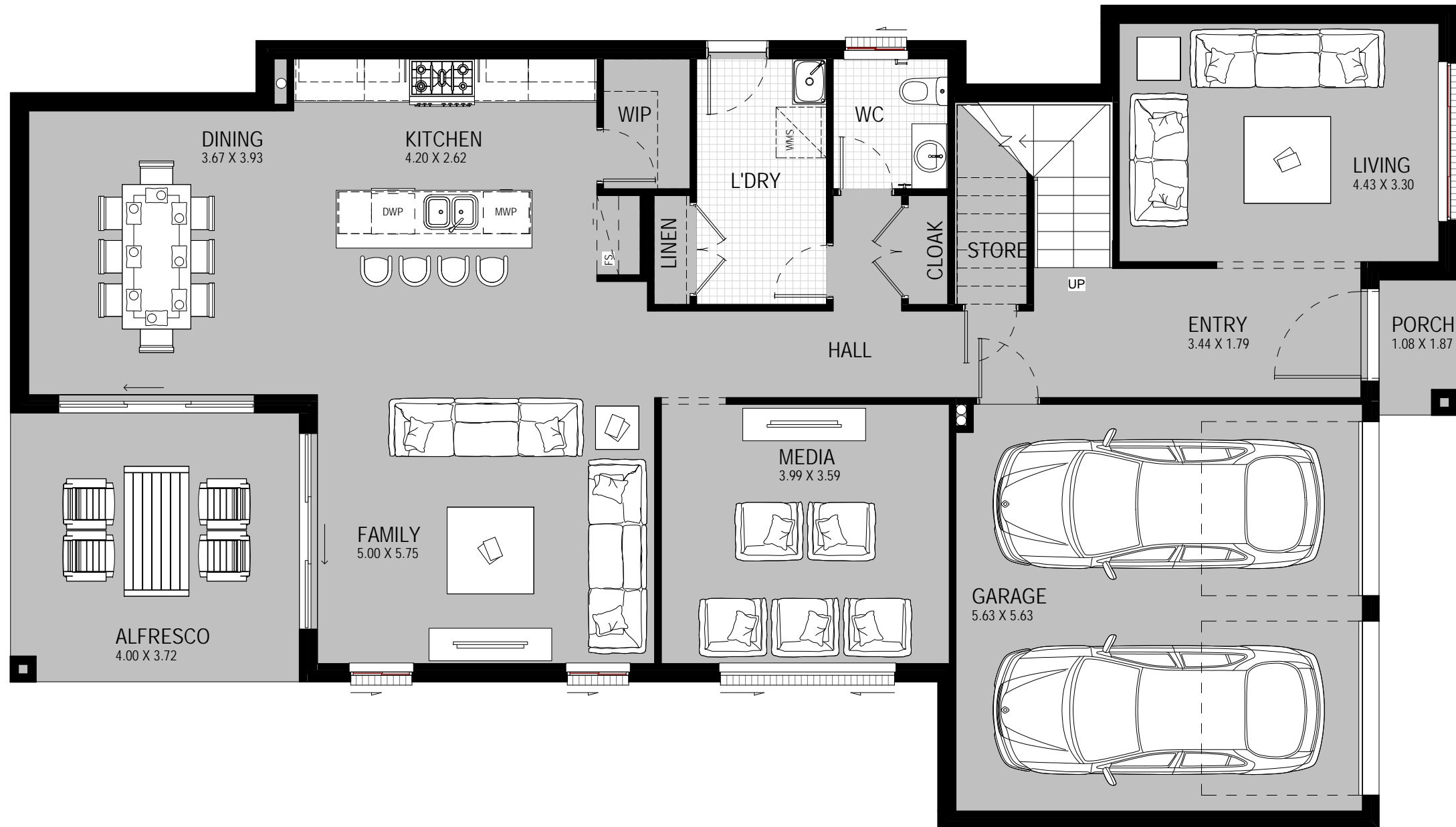




SUITABLE FOR:  
15m + FRONTAGE



### MK 2 BRONTE 33

#### TRADITIONAL

GROUND FLOOR	133.12 m <sup>2</sup>	14.33
FIRST FLOOR	116.69 m <sup>2</sup>	12.56
GARAGE	34.97 m <sup>2</sup>	3.76
PORCH	2.02 m <sup>2</sup>	0.22
ALFRESCO	14.88 m <sup>2</sup>	1.60
STAIR VOID	6.12 m <sup>2</sup>	0.66
TOTAL	307.80 m <sup>2</sup>	33.13

TOTAL WIDTH: 11.40 m    TOTAL LENGTH: 20.03 m

#### BROCHURE GROUND FLOOR

**kurmondhomes** PTY LTD  
BUILDERS LICENCE: 205 457C    ABN: 481 288 211 98

10 Sovereign Place  
South Windsor  
NSW 2756.    © COPYRIGHT

T: 1300 764 761  
F: (02) 4577 6332

ALL RIGHTS RESERVED. This plan is the property of KURMOND HOMES PTY LTD. Copyright in this document is owned by KURMOND HOMES PTY LTD. Under the provisions of the Copyright ACT 1968 and is intended for use only as authorised by KURMOND HOMES PTY LTD.



SUITABLE FOR:  
15m + FRONTAGE



**MK 2 BRONTE 33**

**TRADITIONAL**

GROUND FLOOR	133.12 m <sup>2</sup>	14.33
FIRST FLOOR	116.69 m <sup>2</sup>	12.56
GARAGE	34.97 m <sup>2</sup>	3.76
PORCH	2.02 m <sup>2</sup>	0.22
ALFRESCO	14.88 m <sup>2</sup>	1.60
STAIR VOID	6.12 m <sup>2</sup>	0.66
<b>TOTAL</b>	<b>307.80 m<sup>2</sup></b>	<b>33.13</b>
<b>TOTAL WIDTH:</b> 11.40 m	<b>TOTAL LENGTH:</b> 20.03 m	

**BROCHURE FIRST FLOOR**

**kurmondhomes** PTY LTD  
BUILDERS LICENCE: 205 457C ABN: 481 288 211 98

10 Sovereign Place  
South Windsor  
NSW 2756. © COPYRIGHT

T: 1300 764 761  
F: (02) 4577 6332  
ALL RIGHTS RESERVED. This plan is the property of KURMOND HOMES PTY LTD. Copyright in this documents is owned by KURMOND HOMES PTY LTD. Under the provisions of the Copyright ACT 1968 and is intended for use only as authorised by KURMOND HOMES PTY LTD.