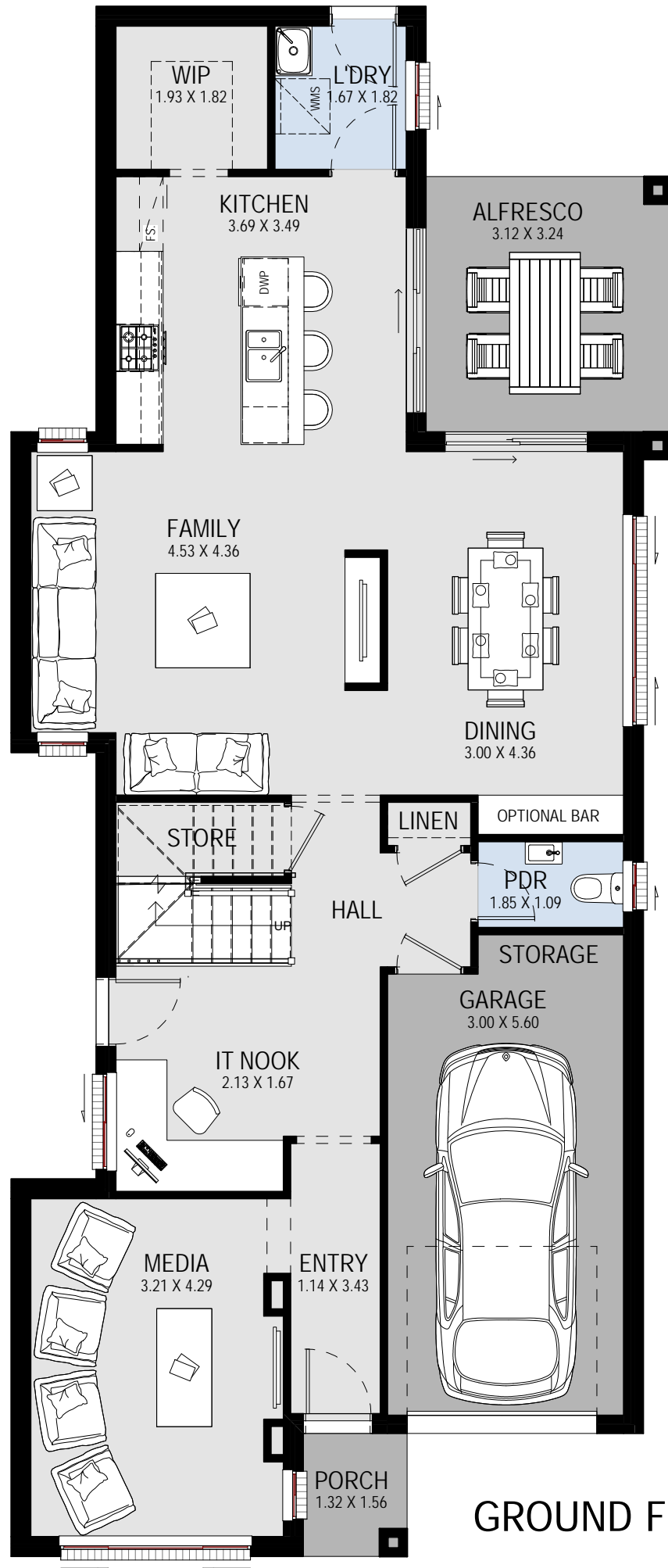
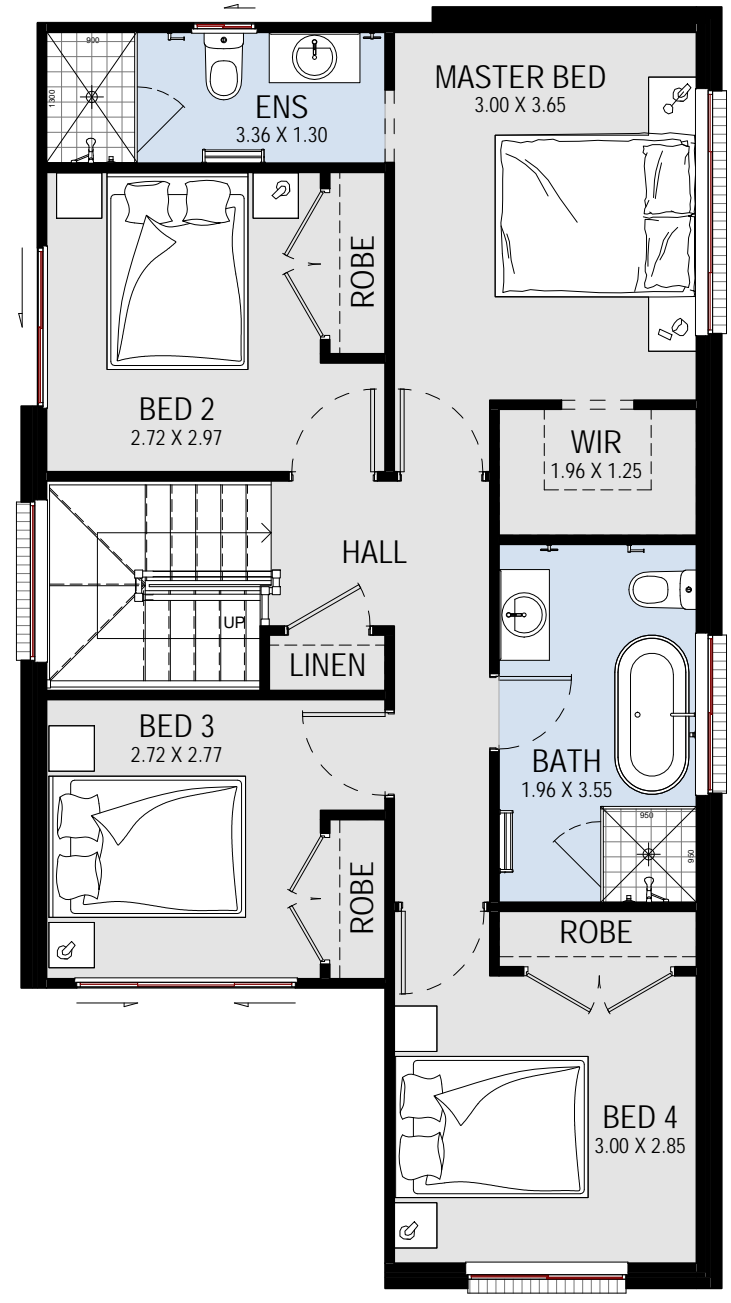


SUITABLE FOR:
10m + FRONTAGE
 SUITABLE FOR ZERO LOT BOUNDARY



GROUND FLOOR PLAN



FIRST FLOOR PLAN

WOODSIDE 23
 TRADITIONAL

GROUND FLOOR	104.63 m ²	11.26
FIRST FLOOR	71.67 m ²	7.71
GARAGE	20.00 m ²	2.15
PORCH	2.06 m ²	0.22
ALFRESCO	10.23 m ²	1.10
STAIR VOID	4.70 m ²	0.51
TOTAL	213.29 m ²	22.96
TOTAL WIDTH: 8.39 m	TOTAL LENGTH: 19.67 m	

BROCHURE PLAN



ALL RIGHTS RESERVED. This plan is the property of KURMOND HOMES PTY LTD. Copyright in this documents is owned by KURMOND HOMES PTY LTD. Under the provisions of the Copyright ACT 1968 and is intended for use only as authorised by KURMOND HOMES PTY LTD.
 KURMOND COMPLETE IS A RANGE OF KURMOND HOMES PTY LTD.
 BUILDERS LICENCE: 205 457C ABN:481 288 211 98 © COPYRIGHT