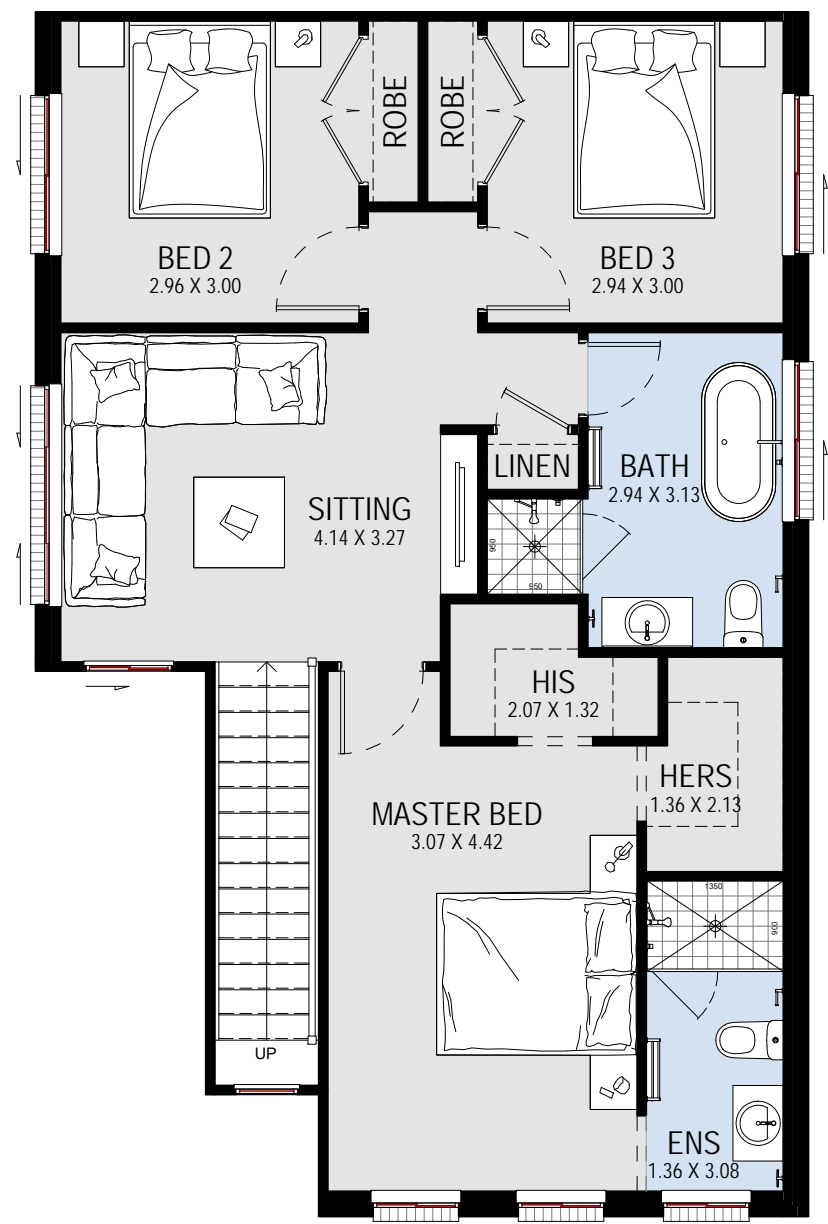
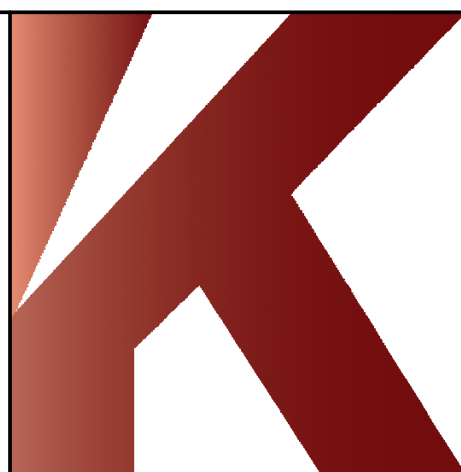


GROUND FLOOR PLAN



FIRST FLOOR PLAN



SUITABLE FOR:  
**10m + FRONTAGE**  
 SUITABLE FOR ZERO LOT BOUNDARY

**ROCHESTER 24**  
 TRADITIONAL

GROUND FLOOR	107.94 m <sup>2</sup>	11.62
FIRST FLOOR	76.83 m <sup>2</sup>	8.27
GARAGE	21.73 m <sup>2</sup>	2.34
PORCH	3.33 m <sup>2</sup>	0.36
ALFRESCO	8.96 m <sup>2</sup>	0.96
STAIR VOID	4.33 m <sup>2</sup>	0.47
TOTAL	223.11 m <sup>2</sup>	24.02
TOTAL WIDTH: 8.75 m	TOTAL LENGTH: 20.75 m	

BROCHURE PLAN



ALL RIGHTS RESERVED. This plan is the property of KURMOND HOMES PTY LTD. Copyright in this documents is owned by KURMOND HOMES PTY LTD. Under the provisions of the Copyright ACT 1968 and is intended for use only as authorised by KURMOND HOMES PTY LTD.  
 KURMOND COMPLETE IS A RANGE OF KURMOND HOMES PTY LTD.  
 BUILDERS LICENCE: 205 457C ABN:481 288 211 98 © COPYRIGHT