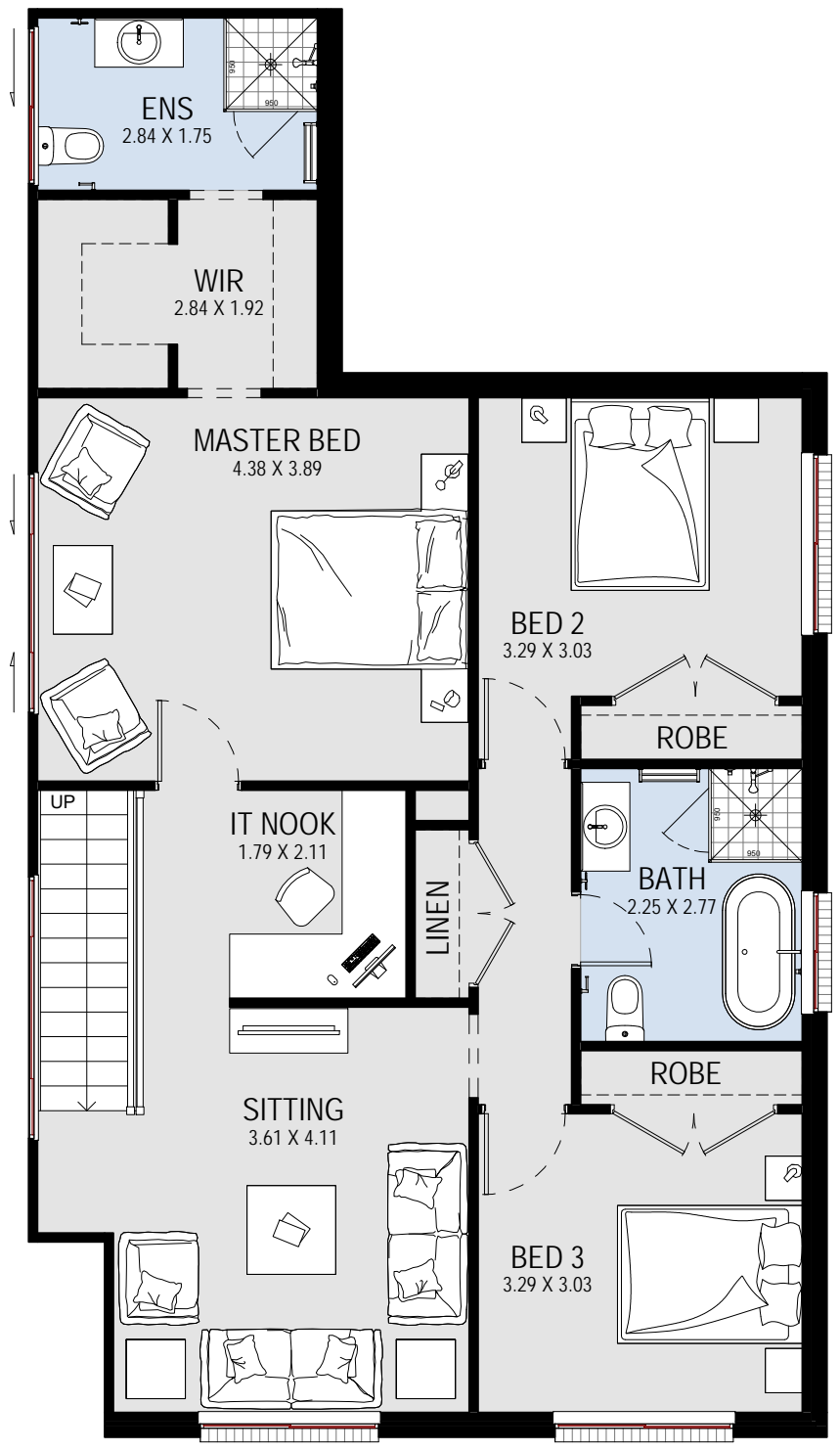
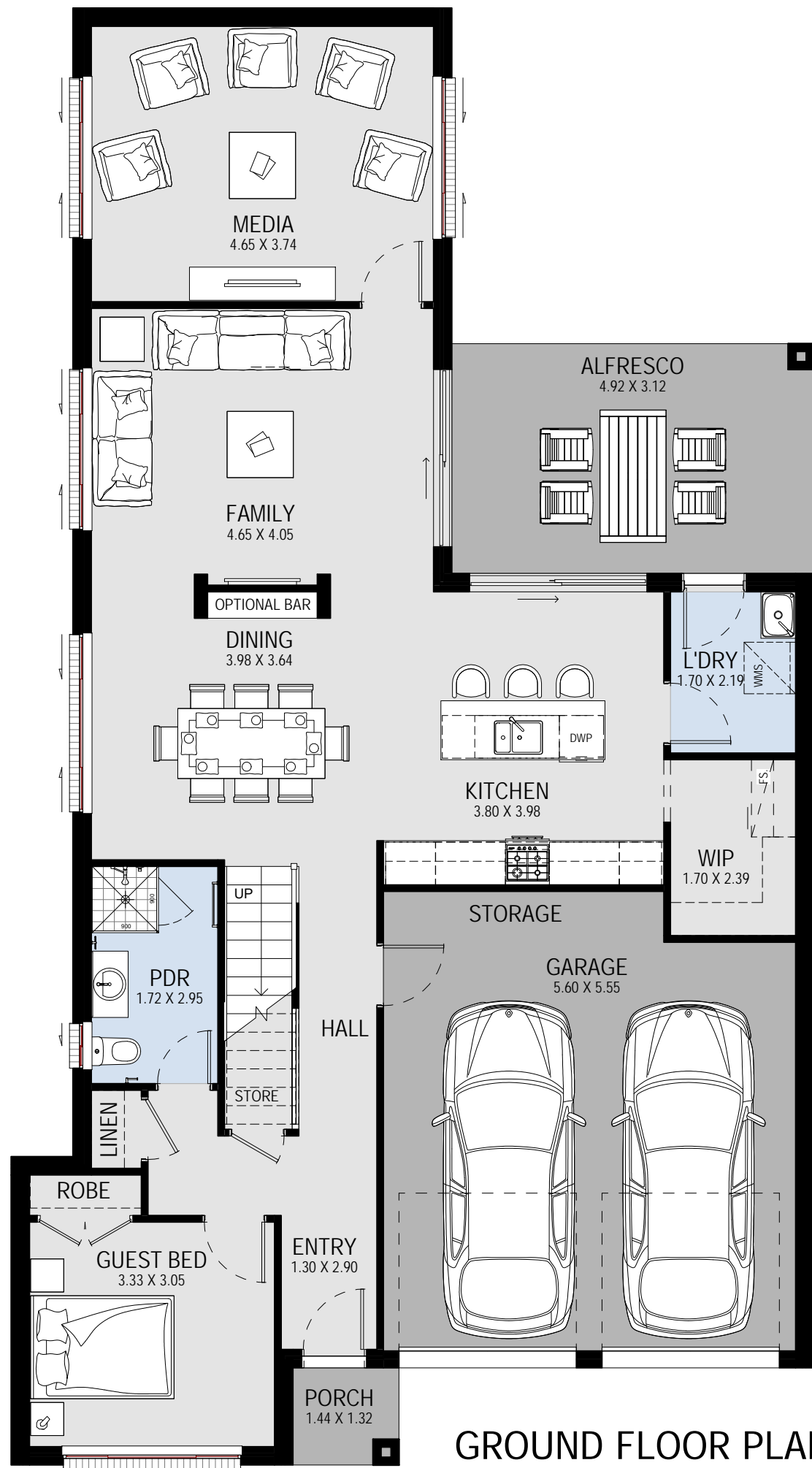


SUITABLE FOR:  
**12.5m + FRONTAGE**  
 SUITABLE FOR ZERO LOT BOUNDARY



**NORTH HAVEN 29**

**TRADITIONAL**

GROUND FLOOR	119.20 m <sup>2</sup>	12.83
FIRST FLOOR	94.36 m <sup>2</sup>	10.16
GARAGE	36.44 m <sup>2</sup>	3.92
PORCH	1.89 m <sup>2</sup>	0.20
ALFRESCO	15.35 m <sup>2</sup>	1.65
STAIR VOID	3.25 m <sup>2</sup>	0.35
<b>TOTAL</b>	<b>270.49 m<sup>2</sup></b>	<b>29.12</b>

TOTAL WIDTH: 10.91 m    TOTAL LENGTH: 19.79 m

**BROCHURE PLAN**



ALL RIGHTS RESERVED. This plan is the property of KURMOND HOMES PTY LTD. Copyright in this documents is owned by KURMOND HOMES PTY LTD. Under the provisions of the Copyright ACT 1968 and is intended for use only as authorised by KURMOND HOMES PTY LTD.  
 KURMOND COMPLETE IS A RANGE OF KURMOND HOMES PTY LTD.  
 BUILDERS LICENCE: 205 457C    ABN: 481 288 211 98    © COPYRIGHT