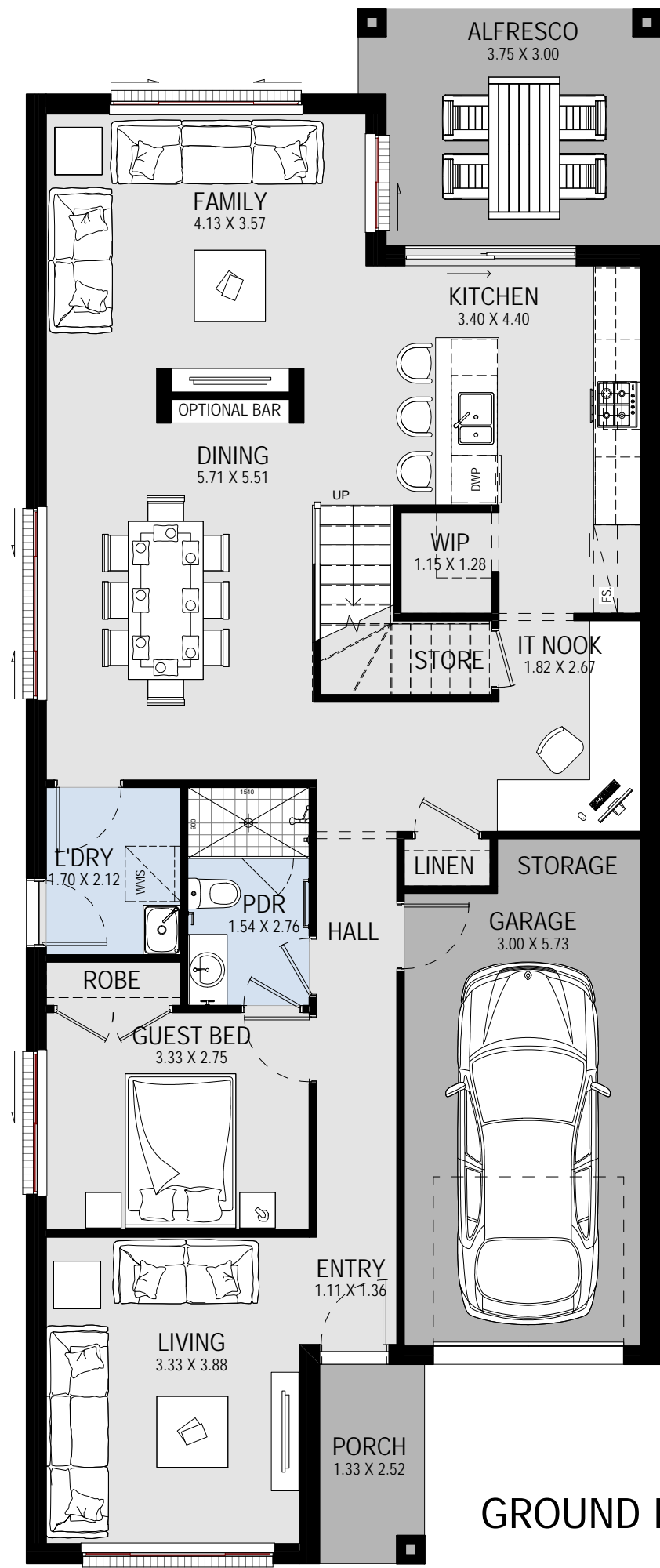
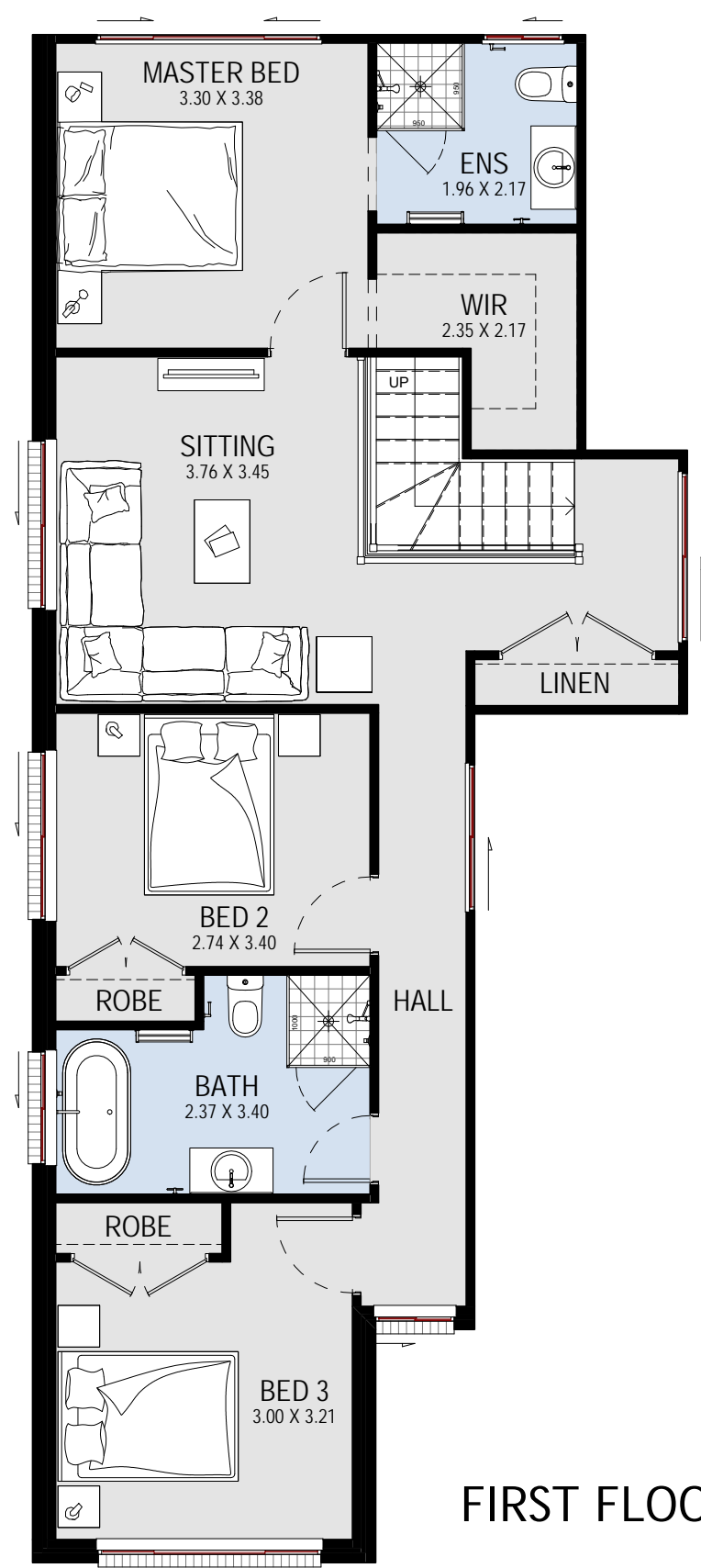


SUITABLE FOR:  
**9m + FRONTAGE**  
 SUITABLE FOR ZERO LOT BOUNDARY



GROUND FLOOR PLAN



FIRST FLOOR PLAN

**MELROSE 25**

**TRADITIONAL**

GROUND FLOOR	110.91 m <sup>2</sup>	11.94
FIRST FLOOR	84.63 m <sup>2</sup>	9.11
GARAGE	20.80 m <sup>2</sup>	2.24
PORCH	3.35 m <sup>2</sup>	0.36
ALFRESCO	10.82 m <sup>2</sup>	1.16
STAIR VOID	3.55 m <sup>2</sup>	0.38
TOTAL	234.05 m <sup>2</sup>	25.19
TOTAL WIDTH: 8.03 m	TOTAL LENGTH: 19.67 m	

**BROCHURE PLAN**



ALL RIGHTS RESERVED. This plan is the property of KURMOND HOMES PTY LTD. Copyright in this documents is owned by KURMOND HOMES PTY LTD. Under the provisions of the Copyright ACT 1968 and is intended for use only as authorised by KURMOND HOMES PTY LTD.  
 KURMOND COMPLETE IS A RANGE OF KURMOND HOMES PTY LTD.  
 BUILDERS LICENCE: 205 457C ABN:481 288 211 98 © COPYRIGHT